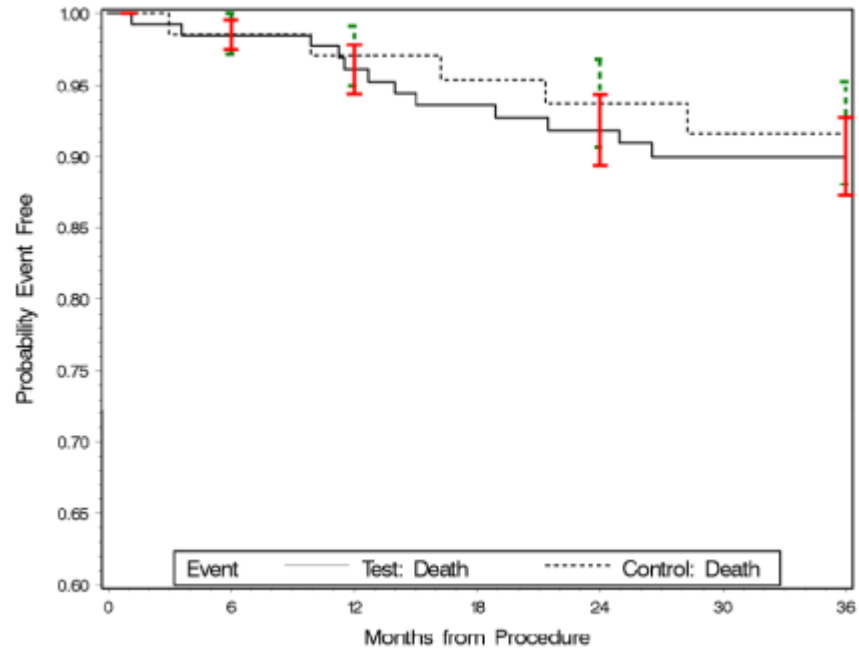


Ascertainment Bias BMS vs. PTA (RESILIENT Trial)



Probability Alive						
-- Test / Control --						
Month	# Pts at Risk	Cumulative # Events	Cumulative Censored	Probability Event Free	Difference (95% CI)	P-value
0	134 / 72	0 / 0	0 / 0	1.000 / 1.000	0.000 (0.00, 0.00)	0.68
1	133 / 72	0 / 0	1 / 0	1.000 / 1.000	0.000 (0.00, 0.00)	
6	128 / 66	2 / 1	4 / 5	0.985 / 0.986	-0.001 (-0.04, 0.03)	
12	118 / 62	5 / 2	11 / 8	0.961 / 0.971	-0.010 (-0.06, 0.04)	
24	105 / 51	10 / 4	19 / 17	0.919 / 0.937	-0.018 (-0.10, 0.06)	
36	61 / 30	12 / 5	62 / 37	0.900 / 0.917	-0.017 (-0.11, 0.07)	

The nominal 95% confidence intervals for the difference at each time point were calculated using the Kaplan Meier estimates and Greenwood's formula. The Kaplan-Meier analysis uses the date of the last reported contact (e.g., follow-up, lab test result or non-death AE) as the censored date. Therefore subjects who missed a specified follow-up (e.g., 6-months), but were confirmed to be alive at either a future follow-up (e.g., 12-months) or through contact with the site, were not censored in the interval that includes the specified follow-up.