

Figures

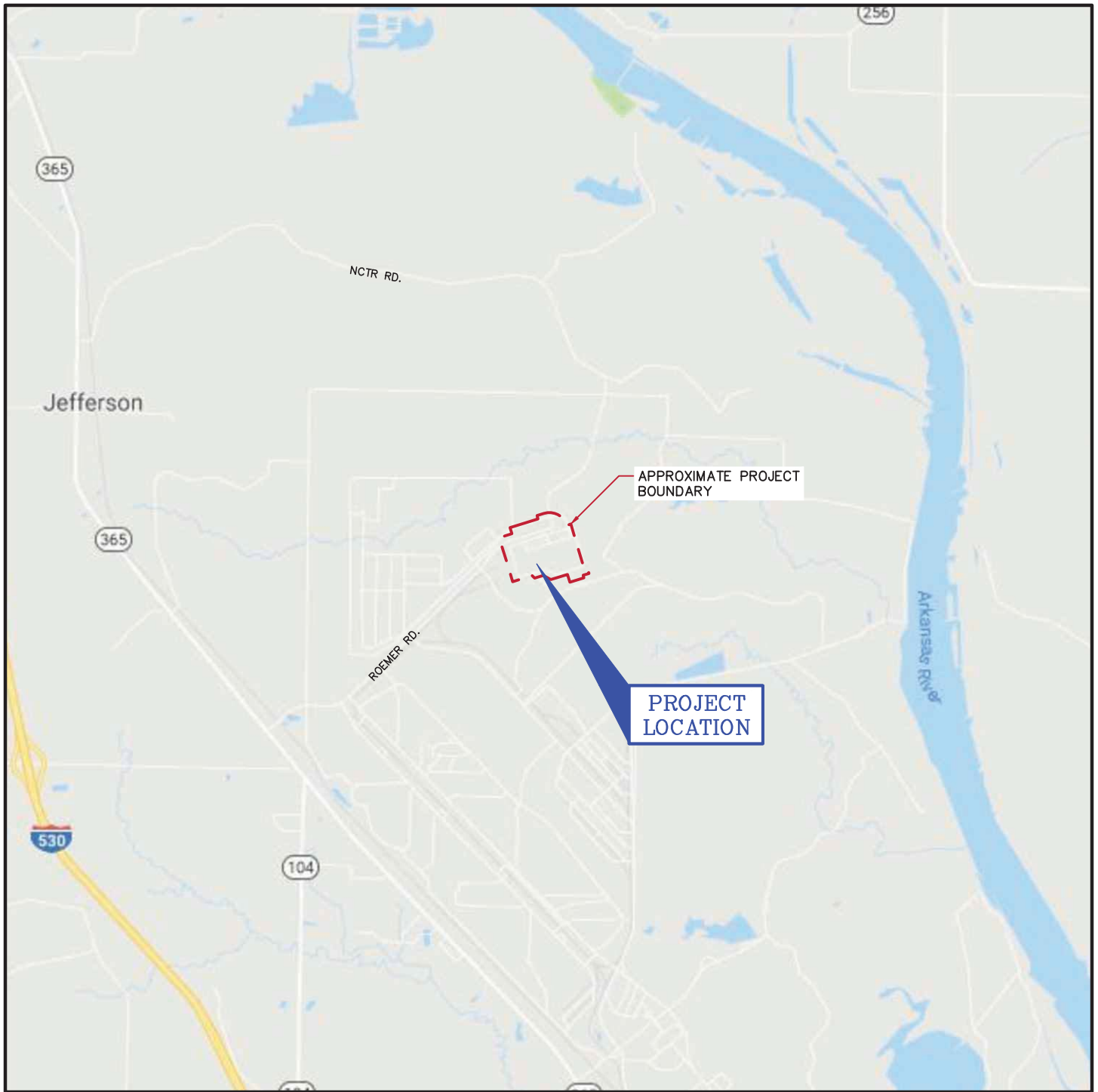


FIGURE NO. 1
 SITE LOCATION MAP TAKEN FROM GOOGLE MAPS

NEPA ENVIRONMENTAL ASSESSMENT
 JEFFERSON LABS CAMPUS DEVELOPMENT PROJECT
 3900 NCTR ROAD
 JEFFERSON, ARKANSAS



CIVIL ENGINEERING AND ENVIRONMENTAL SERVICES
 3512 South Shackleford Road
 Little Rock, Arkansas 72205
 (501) 221-7122 fax (501) 221-7775

SUBMITTED:	H. SHARP
DRAWN:	D. MADDEN
CHECKED:	H. SHARP
DATE:	DEC. 13, 2018

SCALE:

 0 5000'

JOB NUMBER:
 WERA-11258

FILE: F1-F4 DRAWINGS.DWG

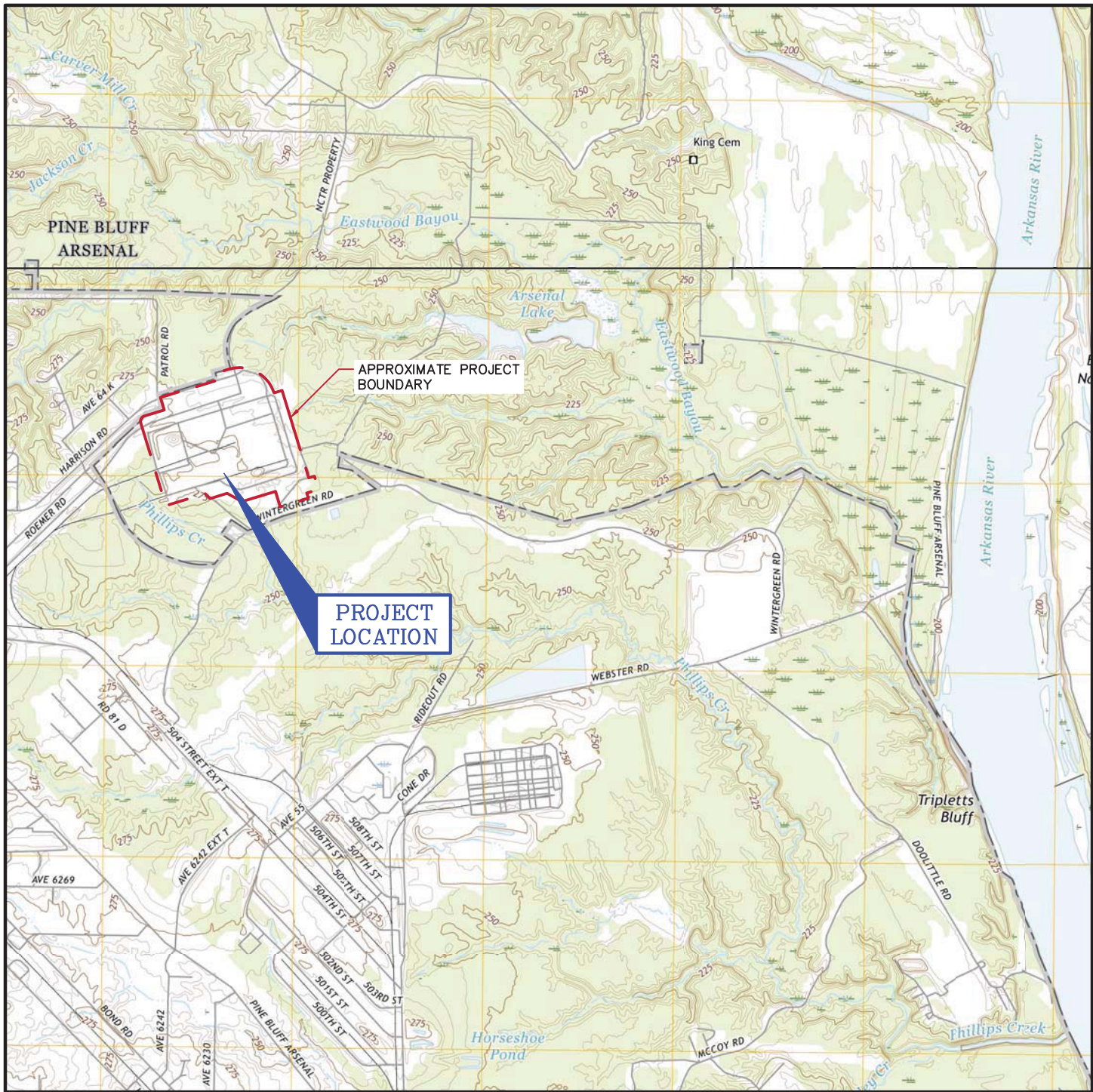


FIGURE NO. 2

SITE TOPOGRAPHIC MAP TAKEN FROM WHITE HALL USGS QUADRANGLE MAP

NEPA ENVIRONMENTAL ASSESSMENT
 JEFFERSON LABS CAMPUS DEVELOPMENT PROJECT
 3900 NCTR ROAD
 JEFFERSON, ARKANSAS



CIVIL ENGINEERING AND ENVIRONMENTAL SERVICES
 3512 South Shackelford Road
 Little Rock, Arkansas 72205
 (501) 221-7122 fax (501) 221-7775

SUBMITTED:	H. SHARP
DRAWN:	D. MADDEN
CHECKED:	H. SHARP
DATE:	DEC. 13, 2018

SCALE:

 0 2500'

JOB NUMBER:
 WERA-11258

FILE: F1-F4 DRAWINGS.DWG



APPROXIMATE PROJECT
BOUNDARY



CIVIL ENGINEERING AND ENVIRONMENTAL SERVICES
3512 South Shackleford Road
Little Rock, Arkansas 72205
(501) 221-7122 fax (501) 221-7775

SUBMITTED:	H. SHARP
DRAWN:	K. LYBRAND
CHECKED:	H. SHARP
DATE:	SEP. 18, 2018



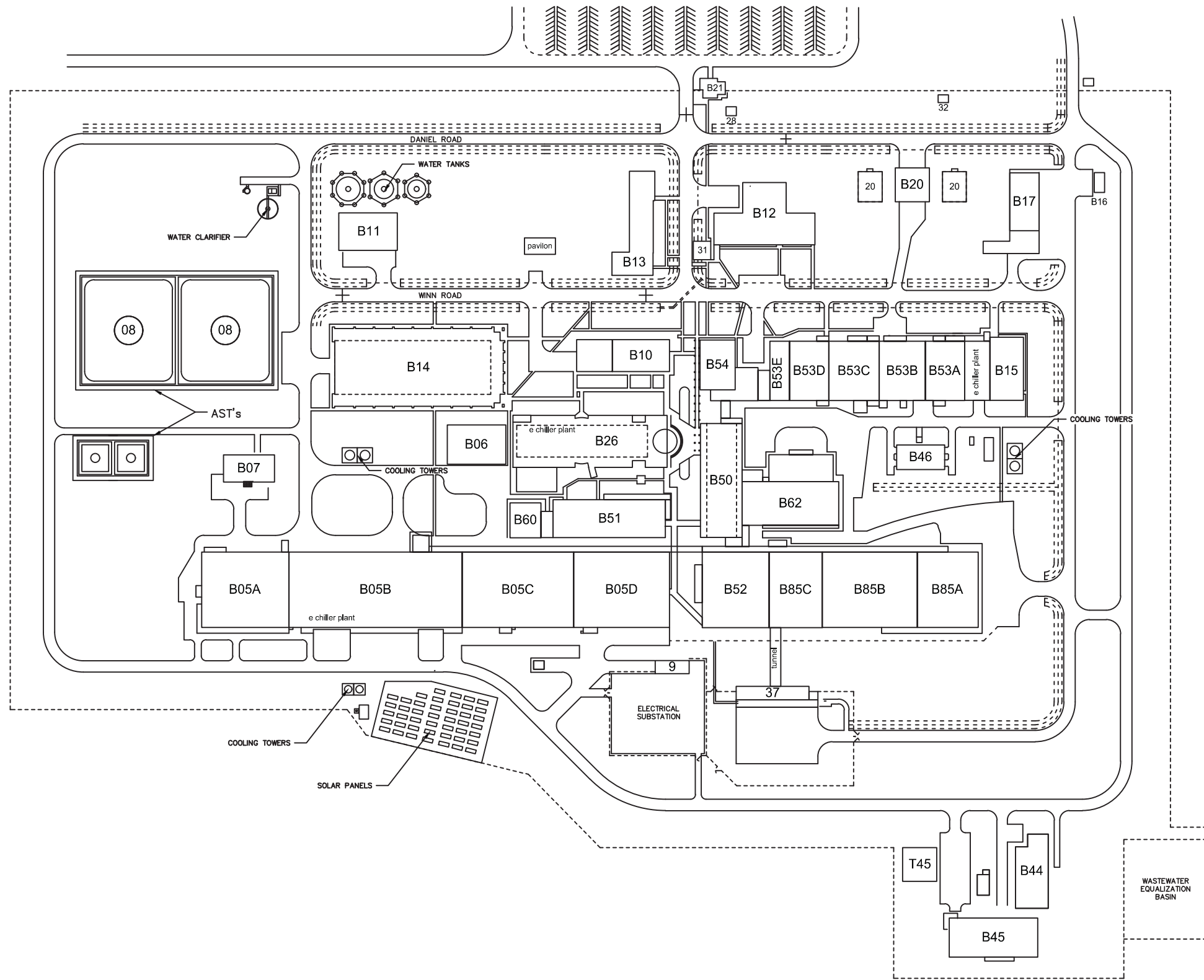
SCALE
0 300'

NEPA ENVIRONMENTAL ASSESSMENT
JEFFERSON LABS CAMPUS DEVELOPMENT PROJECT
3900 NCTR ROAD
JEFFERSON, ARKANSAS

AERIAL SITE PLAN

JOB NUMBER WERA-11258
FIGURE NO. 3

FILE: M:\WER ARCHITECTS-PLANNERS\WERA-11258 - NEPA ENVIRONMENTAL ASSESSMENT\DRAWINGS\F1-F4 DRAWINGS.DWG



CIVIL ENGINEERING AND ENVIRONMENTAL SERVICES
 3512 South Shackleford Road
 Little Rock, Arkansas 72205
 (501) 221-7122 fax (501) 221-7775

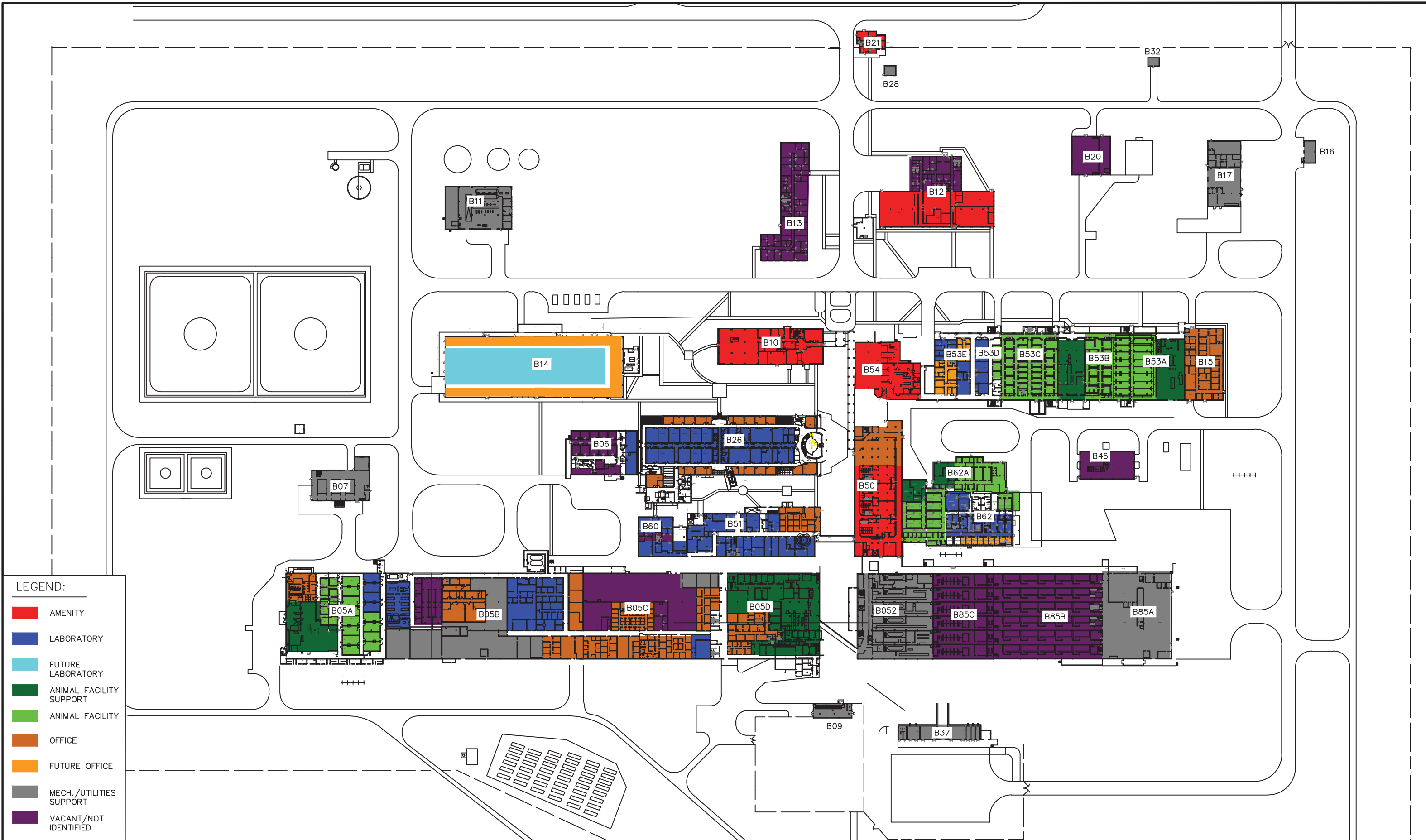
SUBMITTED: H. SHARP
 DRAWN: D. MADDEN
 CHECKED: H. SHARP
 DATE: DEC. 7, 2018



NEPA ENVIRONMENTAL ASSESSMENT
 JEFFERSON LABS CAMPUS DEVELOPMENT PROJECT
 3900 NCTR ROAD
 JEFFERSON, ARKANSAS

EXISTING CAMPUS BUILDINGS

JOB NUMBER
 WERA-11258
 FIGURE NO.
 4



LEGEND:

- AMENITY
- LABORATORY
- FUTURE LABORATORY
- ANIMAL FACILITY SUPPORT
- ANIMAL FACILITY
- OFFICE
- FUTURE OFFICE
- MECH./UTILITIES SUPPORT
- VACANT/NOT IDENTIFIED

CIVIL ENGINEERING AND ENVIRONMENTAL SERVICES
 3512 South Shackleford Road
 Little Rock, Arkansas 72205
 (501) 221-7122 fax (501) 221-7775

SUBMITTED:	H. SHARP
DRAWN:	D. MADDEN
CHECKED:	H. SHARP
DATE:	DEC. 13, 2018



NEPA ENVIRONMENTAL ASSESSMENT
 JEFFERSON LABS CAMPUS DEVELOPMENT PROJECT
 3900 NCTR ROAD
 JEFFERSON, ARKANSAS

CURRENT CAMPUS FUNCTION

JOB NUMBER	WERA-11258
FIGURE NO.	5

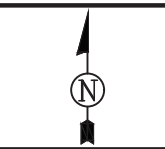


CONDITION:

	GOOD (UNDER 0.05)
	FAIR (0.05-0.10)
	POOR (OVER 0.10)

CIVIL ENGINEERING AND ENVIRONMENTAL SERVICES
 3512 South Shackleford Road
 Little Rock, Arkansas 72205
 (501) 221-7122 fax (501) 221-7775

SUBMITTED:	H. SHARP
DRAWN:	D. MADDEN
CHECKED:	H. SHARP
DATE:	DEC. 13, 2018

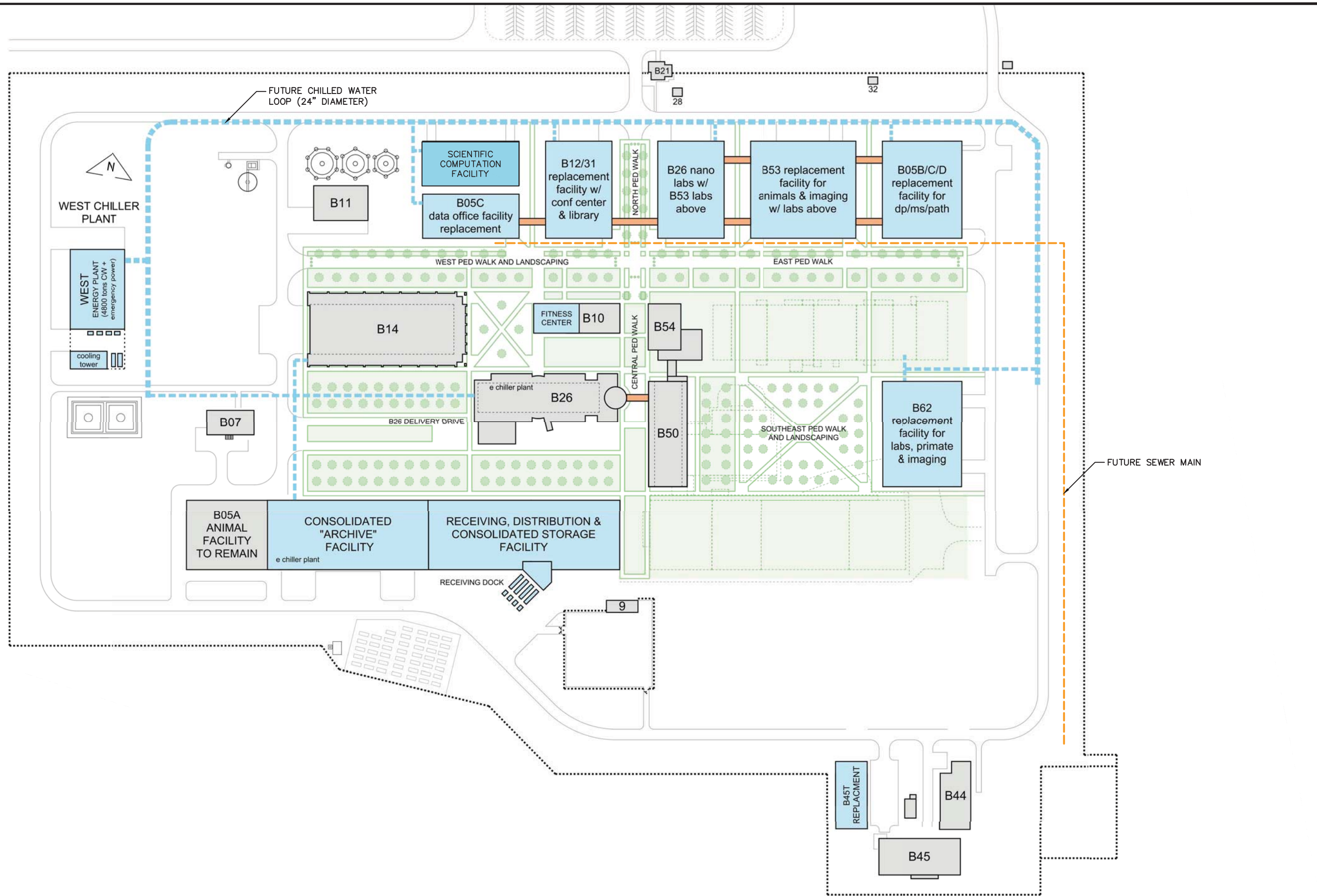


NEPA ENVIRONMENTAL ASSESSMENT
 JEFFERSON LABS CAMPUS DEVELOPMENT PROJECT
 3900 NCTR ROAD
 JEFFERSON, ARKANSAS

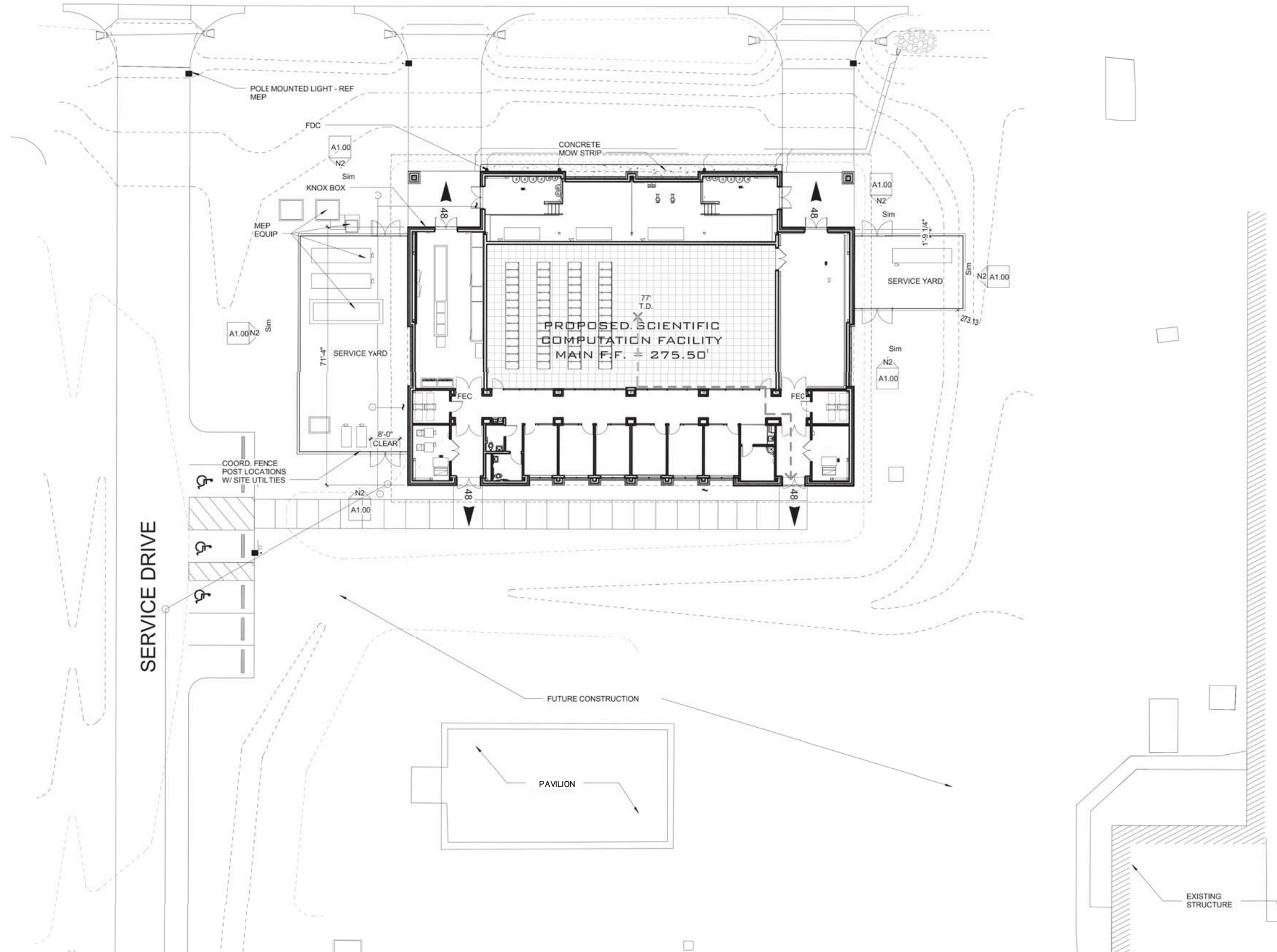
FACILITIES CONDITION INDEX

JOB NUMBER
 WERA-11258
 FIGURE NO.
 6

FILE: M:\WER ARCHITECTS-PLANNERS\WERA-11258 - NEPA ENVIRONMENTAL ASSESSMENT\DRAWINGS\F5- DRAWING.DWG



DANIEL ROAD



CIVIL ENGINEERING AND ENVIRONMENTAL SERVICES
 3512 South Shackleford Road
 Little Rock, Arkansas 72205
 (501) 221-7122 fax (501) 221-7775

SUBMITTED: H. SHARP
 DRAWN: D. MADDEN
 CHECKED: H. SHARP
 DATE: JUNE 28, 2019

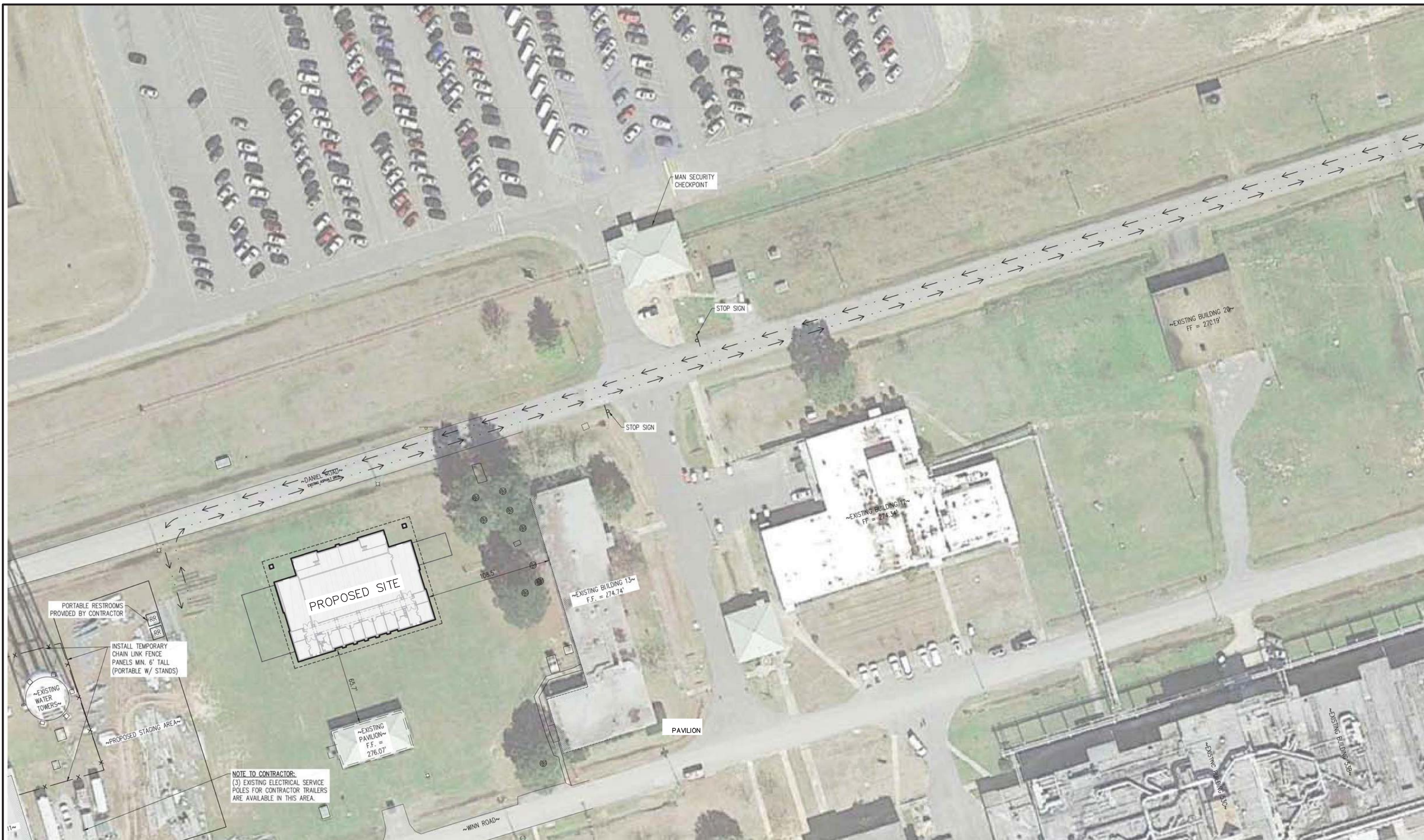


NEPA ENVIRONMENTAL ASSESSMENT
 JEFFERSON LABS CAMPUS DEVELOPMENT PROJECT
 3900 NCTR ROAD
 JEFFERSON, ARKANSAS

FILE: M:\WER ARCHITECTS-PLANNERS\WERA-11258 - NEPA ENVIRONMENTAL ASSESSMENT\DRAWINGS\F5- DRAWING.DWG

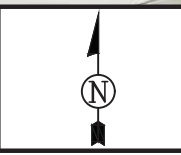
PROPOSED SCIENTIFIC COMPUTATION FACILITY
 SITE PLAN

JOB NUMBER
 WERA-11258
 FIGURE NO.
 8A



CIVIL ENGINEERING AND ENVIRONMENTAL SERVICES
 3512 South Shackleford Road
 Little Rock, Arkansas 72205
 (501) 221-7122 fax (501) 221-7775

SUBMITTED: H. SHARP
 DRAWN: D. MADDEN
 CHECKED: H. SHARP
 DATE: JUNE 28, 2019



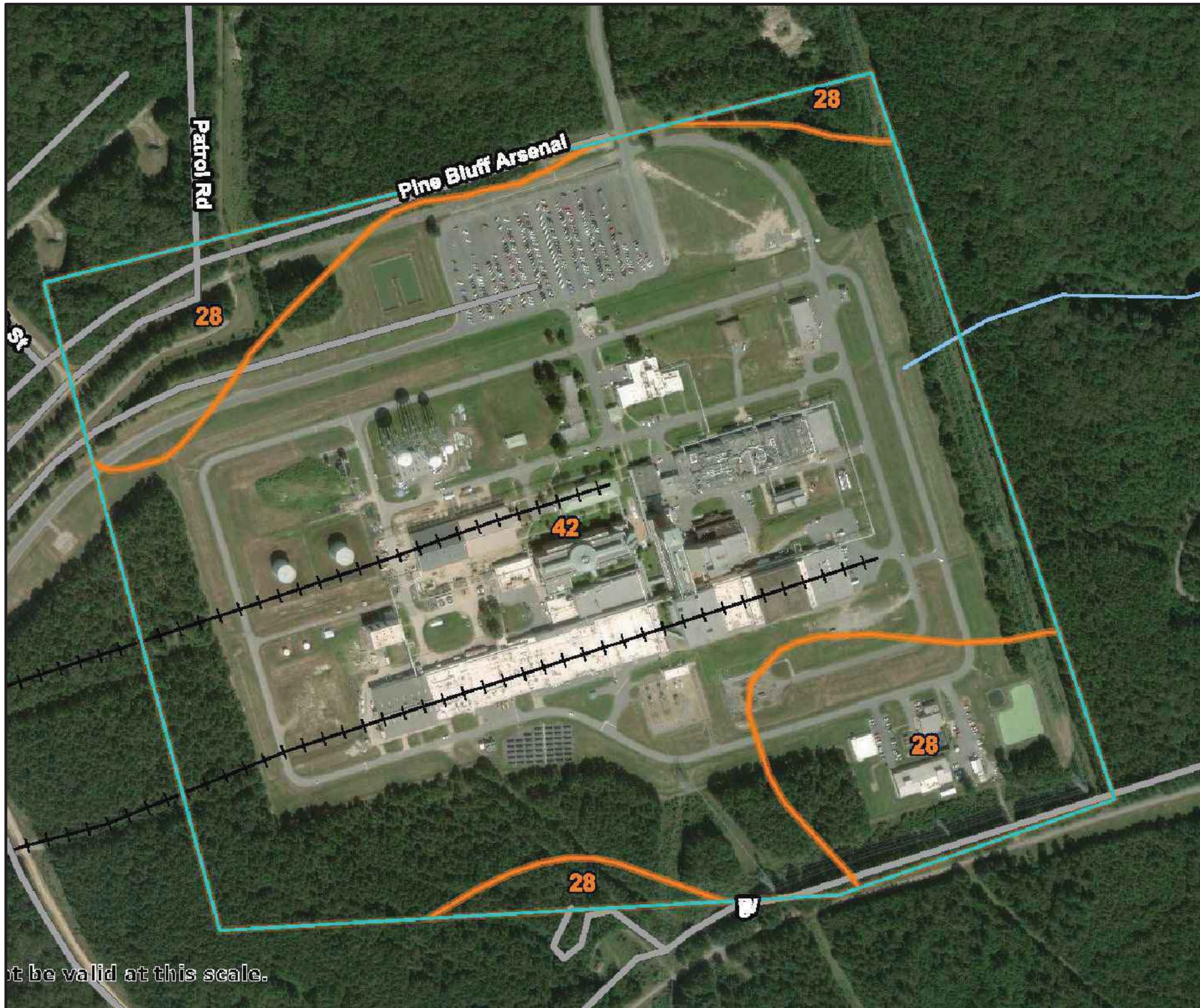
SCALE
 0 75'

NEPA ENVIRONMENTAL ASSESSMENT
 JEFFERSON LABS CAMPUS DEVELOPMENT PROJECT
 3900 NCTR ROAD
 JEFFERSON, ARKANSAS

PROPOSED SCIENTIFIC COMPUTATION FACILITY
 AERIAL LAYOUT

JOB NUMBER
 WERA-11258
 FIGURE NO.
 8B

FILE: M:\WER ARCHITECTS-PLANNERS\WERA-11258 - NEPA ENVIRONMENTAL ASSESSMENT\DRAWINGS\F5- DRAWING.DWG

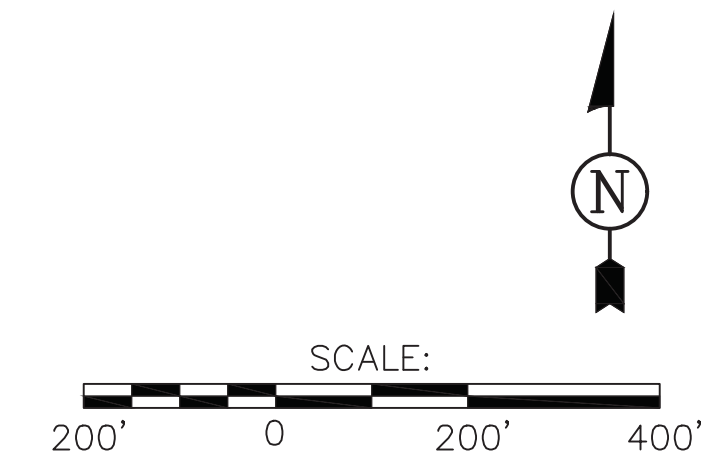


It be valid at this scale.

MAP LEGEND

- Area of Interest (AOI)**
 - Area of Interest (AOI)
- Soils**
 - Soil Map Unit Polygons
 - Soil Map Unit Lines
 - Soil Map Unit Points
- Special Point Features**
 - Blowout
 - Borrow Pit
 - Clay Spot
 - Closed Depression
 - Gravel Pit
 - Gravelly Spot
 - Landfill
 - Lava Flow
 - Marsh or swamp
 - Mine or Quarry
 - Miscellaneous Water
 - Perennial Water
 - Rock Outcrop
 - Saline Spot
 - Sandy Spot
 - Severely Eroded Spot
 - Sinkhole
 - Slide or Slip
 - Sodic Spot
- Water Features**
 - Spoil Area
 - Stony Spot
 - Very Stony Spot
 - Wet Spot
 - Other
 - Special Line Features
 - Streams and Canals
- Transportation**
 - Rails
 - Interstate Highways
 - US Routes
 - Major Roads
 - Local Roads
- Background**
 - Aerial Photography

Map Unit Symbol	Map Unit Name	Acres in AOI	Percent of AOI
28	Pheba silt loam, 0 to 2 percent slopes	33.1	19.9%
42	Savannah fine sandy loam, 3 to 8 percent slopes	133.1	80.1%
Totals for Area of Interest		166.2	100.0%



SHEET TITLE: NRCS SOILS MAP

PROJECT TITLE: NEPA ENVIRONMENTAL ASSESSMENT
JEFFERSON LABS CAMPUS DEVELOPMENT PROJECT
JEFFERSON, ARKANSAS

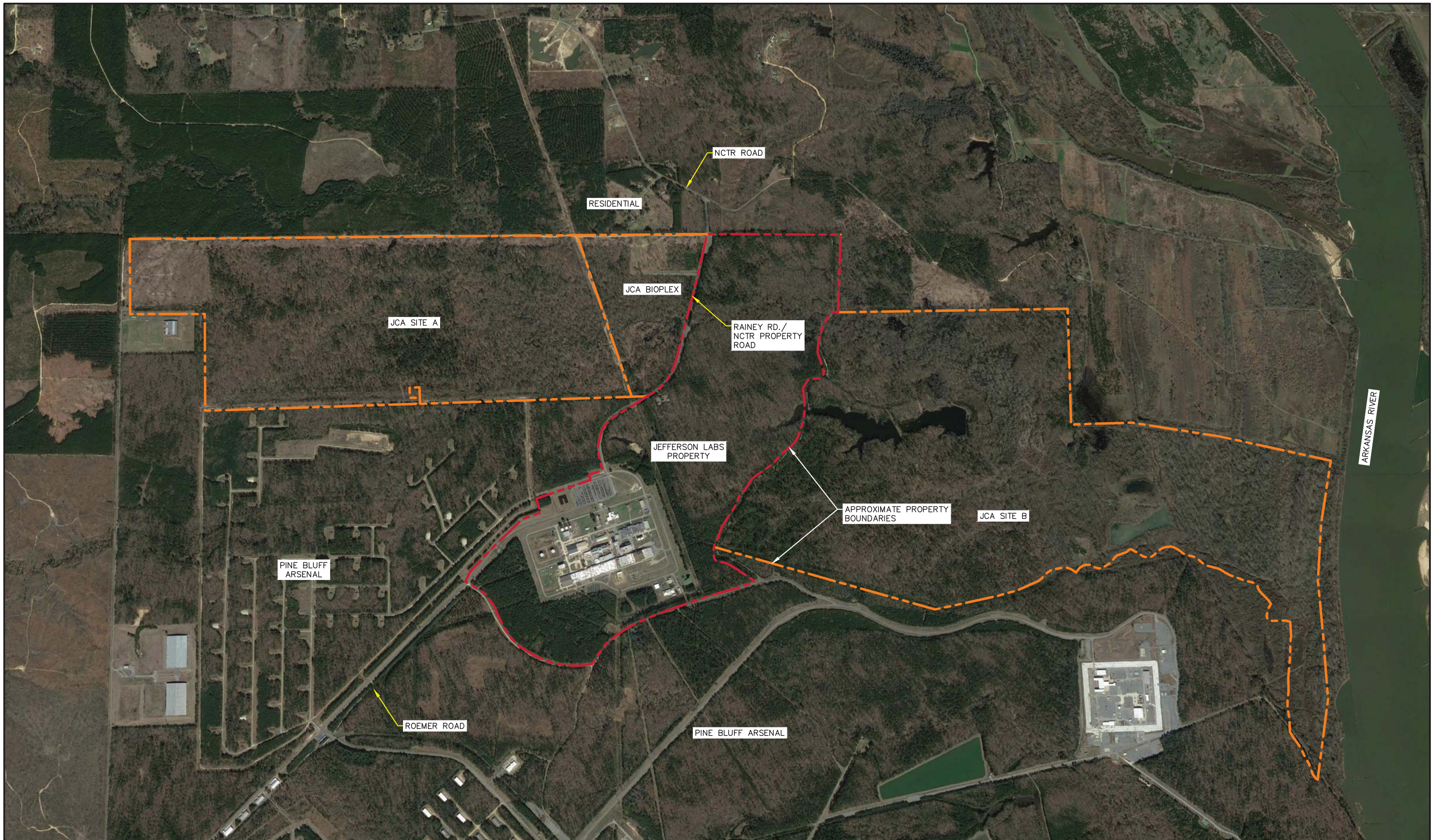
REVISIONS:	
NO.	DESCRIPTION:

CIVIL ENGINEERING AND ENVIRONMENTAL SERVICES 3512 SOUTH SHACKLEFORD RD LITTLE ROCK, ARKANSAS 72205 PH: (501) 221-7122 FX: (501) 221-7775	DESIGNED BY: JTM DRAWN BY: JTM CHECKED BY: JTM DATE: NOV. 12, 2018 SCALE: 1" = 200'
---	---

FILE: M:\NEP ARCHITECTS-PLANNERS\NEPA-11258 - NEPA ENVIRONMENTAL ASSESSMENT\DRAWINGS\8 SOILS MAP.DWG

JOB NUMBER:
WERA-11258

FIGURE NO.
9



CIVIL ENGINEERING AND ENVIRONMENTAL SERVICES
 3512 South Shackelford Rd
 Little Rock, Arkansas 72205
 (501) 221-7122 fax (501) 221-7775

SUBMITTED: H. SHARP
 DRAWN: D. MADDEN
 CHECKED: H. SHARP
 DATE: DEC. 13, 2015



FILE: M:\WER ARCHITECTS-PLANNERS\WERA-11258 - NEPA ENVIRONMENTAL ASSESSMENT\DRAWINGS\F9 AERIAL OVERVIEW.DWG

NEPA ENVIRONMENTAL ASSESSMENT
 JEFFERSON LABS CAMPUS DEVELOPMENT PROJECT
 3900 NCTR ROAD
 JEFFERSON, ARKANSAS

AERIAL OVERVIEW OF THE SURROUNDING
 LAND USE AND ROADS

JOB NUMBER
 WERA-11258

FIGURE NO.:
 10

National Flood Hazard Layer FIRMette



34°22'10.44"N

92°6'59.54"W



Legend

SEE FIS REPORT FOR DETAILED LEGEND AND INDEX MAP FOR FIRM PANEL LAYOUT

SPECIAL FLOOD HAZARD AREAS		Without Base Flood Elevation (BFE) Zone A, V, A99
		With BFE or Depth Zone AE, AO, AH, VE, AR
		Regulatory Floodway
OTHER AREAS OF FLOOD HAZARD		0.2% Annual Chance Flood Hazard, Areas of 1% annual chance flood with average depth less than one foot or with drainage areas of less than one square mile Zone X
		Future Conditions 1% Annual Chance Flood Hazard Zone X
		Area with Reduced Flood Risk due to Levee. See Notes. Zone X
		Area with Flood Risk due to Levee Zone D
OTHER AREAS		Area of Minimal Flood Hazard Zone X
		Effective LOMRs
GENERAL STRUCTURES		Area of Undetermined Flood Hazard Zone D
		Channel, Culvert, or Storm Sewer
		Levee, Dike, or Floodwall
OTHER FEATURES		Cross Sections with 1% Annual Chance Water Surface Elevation
		Coastal Transect
		Base Flood Elevation Line (BFE)
		Limit of Study
		Jurisdiction Boundary
MAP PANELS		Digital Data Available
		No Digital Data Available
		Unmapped

The pin displayed on the map is an approximate point selected by the user and does not represent an authoritative property location.

This map complies with FEMA's standards for the use of digital flood maps if it is not void as described below. The basemap shown complies with FEMA's basemap accuracy standards

The flood hazard information is derived directly from the authoritative NFHL web services provided by FEMA. This map was exported on 11/8/2018 at 6:06:49 PM and does not reflect changes or amendments subsequent to this date and time. The NFHL and effective information may change or become superseded by new data over time.

This map image is void if the one or more of the following map elements do not appear: basemap imagery, flood zone labels, legend, scale bar, map creation date, community identifiers, FIRM panel number, and FIRM effective date. Map images for unmapped and unmodernized areas cannot be used for regulatory purposes.

USGS The National Map: Orthoimagery. Data refreshed October 2017. 0 250 500 1,000 1,500 2,000 Feet 1:6,000

34°21'40.74"N

92°6'22.09"W



CIVIL ENGINEERING AND ENVIRONMENTAL SERVICES
3512 South Shackelford Road
Little Rock, Arkansas 72205
(501) 221-7122 fax (501) 221-7775

SUBMITTED: H. SHARP
DRAWN: D. MADDEN
CHECKED: H. SHARP
DATE: DEC. 13, 2018



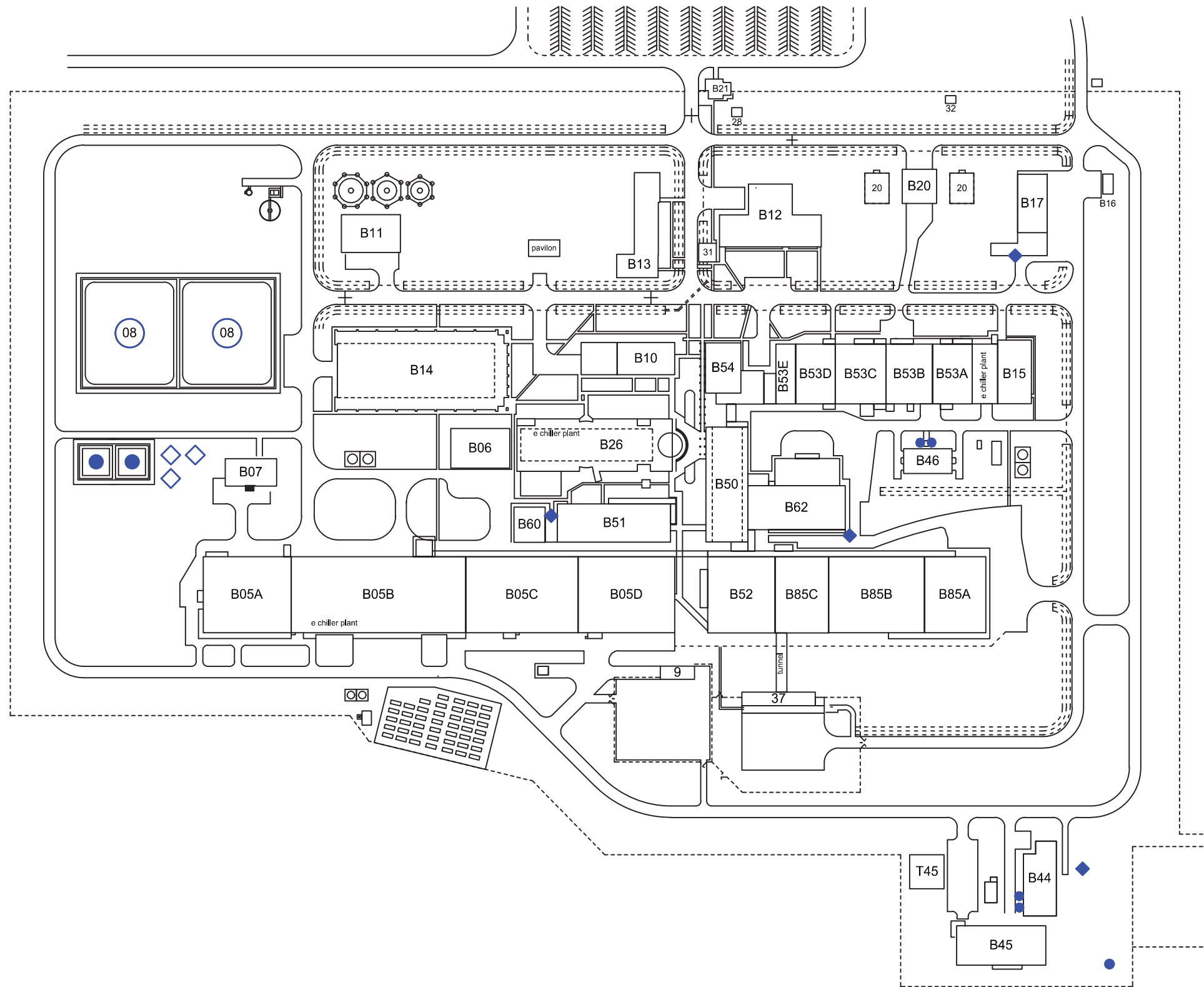
SCALE
0 N.T.S.

NEPA ENVIRONMENTAL ASSESSMENT
JEFFERSON LABS CAMUPS DEVELOPMENT PROJECT
3900 NCTR ROAD
JEFFERSON, ARKANSAS

FILE: M:\WER ARCHITECTS-PLANNERS\WERA-11258 - NEPA ENVIRONMENTAL ASSESSMENT\DRAWINGS\F5- DRAWING.DWG

FEMA FLOODPLAIN MAP OF THE CAMPUS

JOB NUMBER
WERA-11258
FIGURE NO.
11



LEGEND:

- ◆ UST CLOSED IN PLACE
- ◇ UST REMOVED
- AST IN USE
- AST OUT OF SERVICE



CIVIL ENGINEERING AND ENVIRONMENTAL SERVICES
 3512 South Shackleford Road
 Little Rock, Arkansas 72205
 (501) 221-7122 fax (501) 221-7775

SUBMITTED: H. SHARP
 DRAWN: D. MADDEN
 CHECKED: H. SHARP
 DATE: DEC. 13, 2018



NEPA ENVIRONMENTAL ASSESSMENT
 JEFFERSON LABS CAMPUS DEVELOPMENT PROJECT
 3900 NCTR ROAD
 JEFFERSON, ARKANSAS

PETROLEUM TANKS ON THE CAMPUS

JOB NUMBER
 WERA-11258
 FIGURE NO.
 12

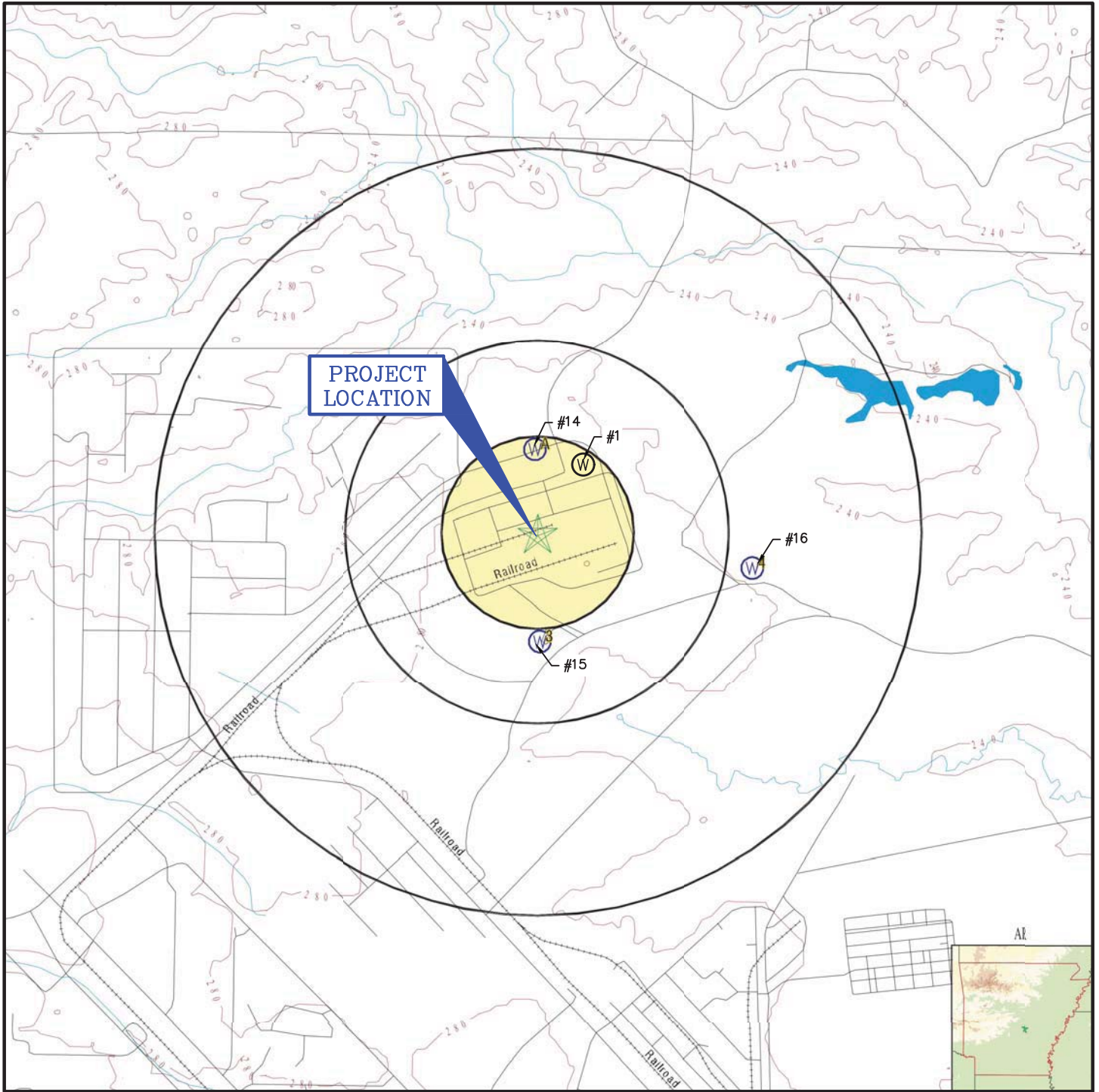


FIGURE NO. 13
GROUNDWATER WELLS IN THE PROJECT AREA

NEPA ENVIRONMENTAL ASSESSMENT
JEFFERSON LABS CAMPUS DEVELOPMENT PROJECT
3900 NCTR ROAD
JEFFERSON, ARKANSAS



CIVIL ENGINEERING AND ENVIRONMENTAL SERVICES
3512 South Shackelford Road
Little Rock, Arkansas 72205
(501) 221-7122 fax (501) 221-7775

SUBMITTED:	H. SHARP
DRAWN:	D. MADDEN
CHECKED:	H. SHARP
DATE:	DEC. 13, 2018

SCALE:
0 ————— 2000'

JOB NUMBER:
WERA-11258

FILE: F1-F4 DRAWINGS.DWG