

FDA Staff Manual Guides, Volume I - Organizations and Functions

Department of Health and Human Services

Food and Drug Administration

Center for Drug Evaluation and Research

Office of Pharmaceutical Quality

Office of Lifecycle Drug Products

Division of Liquid-Based Products II

Effective Date: September 25, 2019

1. Division of Liquid-Based Products II (DCDLHE).

- A. Manages the overall program responsibilities for the Division, primarily assessments for the drug production section of original Abbreviated New Drug Applications (ANDAs).
- B. Provides direction, clarification, and interpretation on policy and technical issues for the division.
- C. Monitors the lifecycle of both innovator and generic drugs.

2. Liquid-Based Branch 4 (DCDLHE1).

- A. Performs assessments for the drug product sections of original ANDAs and associated amendments using a risk-based approach to determine scientific adequacy and regulatory compliance.
- B. Collaborate with other offices within OPQ to prepare Integrated Quality Assessments and Executive Summaries for submission to OGD establishing the adequacy of ANDAs.
- C. Monitors the lifecycle of both innovator and generic drugs through team-based assessments and collaboration with offices throughout CDER.
- D. Serve as an information resource for other offices within OPQ and CDER regarding generic drug products for resolution of non-assessment functions such as Controlled Correspondences, Application Reconsiderations, and Dispute Resolutions.

3. Liquid-Based Branch 5 (DCDLHE2).

- A. Performs assessments for the drug product sections of original ANDAs and associated amendments using a risk-based approach to determine scientific adequacy and regulatory compliance.
- B. Collaborate with other offices within OPQ to prepare Integrated Quality Assessments and Executive Summaries for submission to OGD establishing the adequacy of ANDAs.
- C. Monitors the lifecycle of both innovator and generic drugs through team-based assessments and collaboration with offices throughout CDER.
- D. Serve as an information resource for other offices within OPQ and CDER regarding generic drug products for resolution of non-assessment functions such as Controlled Correspondences, Application Reconsiderations, and Dispute Resolutions.

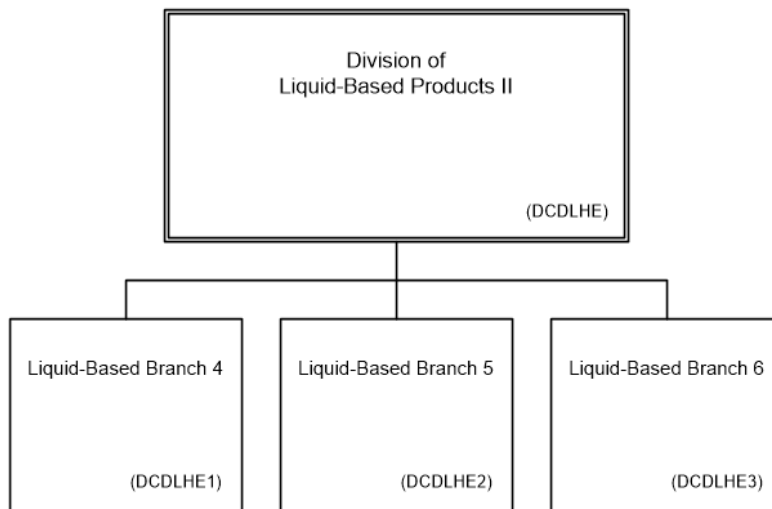
4. Liquid-Based Branch 6 (DCDLHE3).

- A. Performs assessments for the drug product sections of original ANDAs and associated amendments using a risk-based approach to determine scientific adequacy and regulatory compliance.
- B. Collaborate with other offices within OPQ to prepare Integrated Quality Assessments and Executive Summaries for submission to OGD establishing the adequacy of ANDAs.
- C. Monitors the lifecycle of both innovator and generic drugs through team-based assessments and collaboration with offices throughout CDER.
- D. Serve as an information resource for other offices within OPQ and CDER regarding generic drug products for resolution of non-assessment functions such as Controlled Correspondences, Application Reconsiderations, and Dispute Resolutions.

5. Authority and Effective Date.

The functional statements for the Division of Liquid-Based Products II were approved by the Secretary of Health and Human Services on September 25, 2019.

**Department of Health and Human Services
Food and Drug Administration
Center for Drug Evaluation and Research
Office of Pharmaceutical Quality
Office of Lifecycle Drug Products
Division of Liquid-Based Products II**



Staff Manual Guide 1280.95a
Organizations and Functions
Effective Date: September 25, 2019

The following is the Department of Health and Human Services, Food and Drug Administration, Center for Drug Evaluation and Research, Office of Pharmaceutical Quality, Office of Lifecycle Drug Products, Division of Liquid-Based Products II organizational structures depicting all the organizational structures reporting to the Director.

Division of Liquid-Based Products II (DCDLHE).

These organizations report to the Division of Liquid-Based Products II:

Liquid-Based Branch 4 (DCDLHE1)

Liquid-Based Branch 5 (DCDLHE2)

Liquid-Based Branch 6 (DCDLHE3)