



# **U.S. Influenza Surveillance**

**Lisa Grohskopf, MD, MPH**

**Influenza Division, NCIRD, CDC**

FDA Vaccines and Related Biological Products Advisory Committee (VRBPAC)

March 5, 2021

# CDC Influenza Division Surveillance

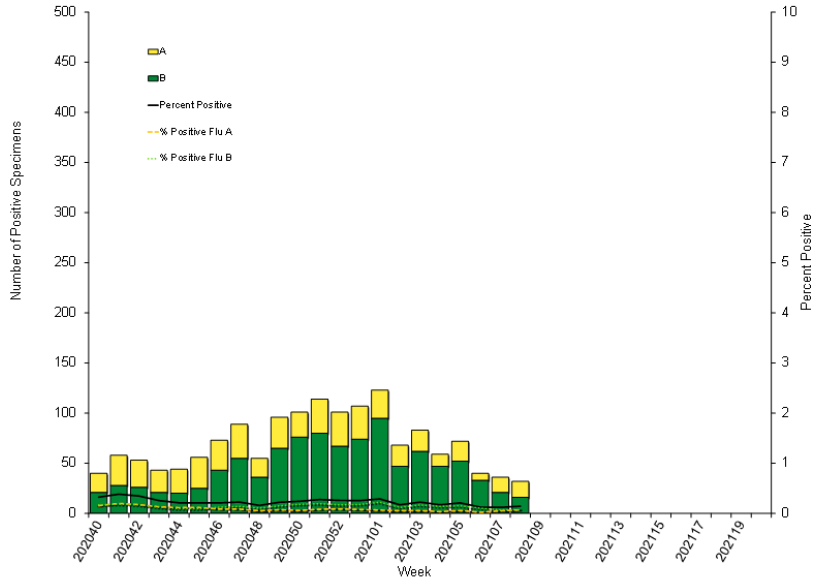
- Lynnette Brammer
- Alicia Budd
- Krista Kniss
- Noreen Ajayi
- Peter Daly
- Arielle Colon
- Angiezel Merced-Morales
- Nicolas Dempster
- Stacey Huang
- Rishika Parikh
- Katie Tastad
- Kasey Diebold

# U.S. Influenza Surveillance, 2020-21

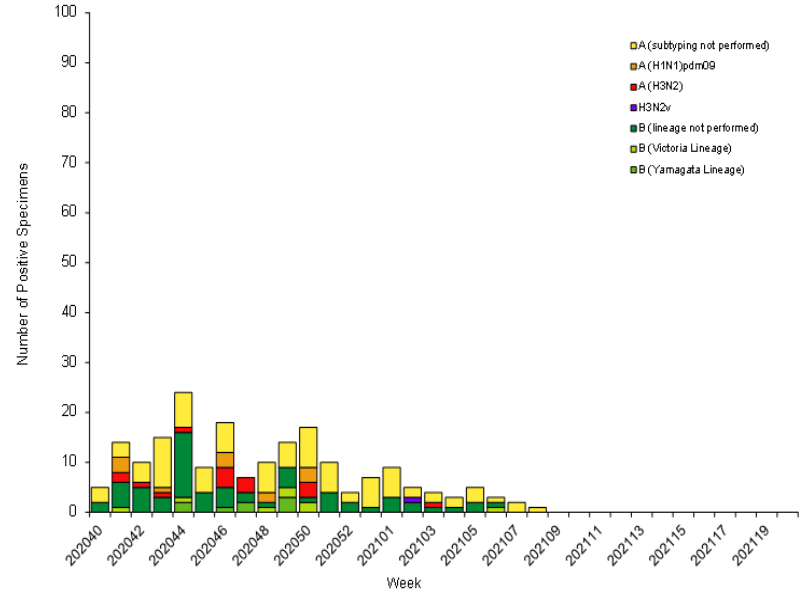
*CDC FluView, MMWR Surveillance Week 8 (ending February 27, 2021)*

# Virologic Surveillance

Influenza Positive Tests Reported to CDC by U.S. Clinical Laboratories, National Summary, September 27, 2020 – February 27, 2021

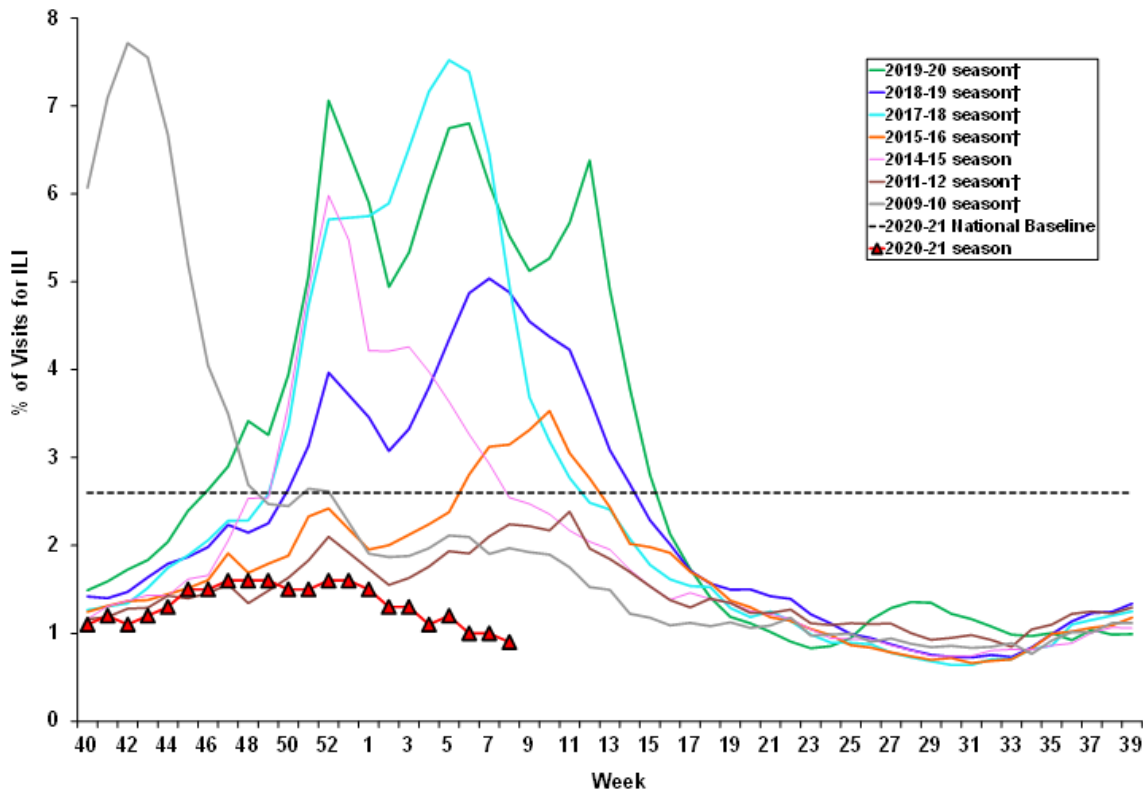


Influenza Positive Tests Reported to CDC by U.S. Public Health Laboratories, National Summary, September 27, 2020 – February 27, 2021



Source: CDC FluView—<https://www.cdc.gov/flu/weekly/index.htm>

**Percentage of Visits for Influenza-like Illness (ILI) Reported by the U.S. Outpatient Influenza-like Illness Surveillance Network (ILINet), Weekly National Summary, 2020-2021 and Selected Previous Seasons**



†These seasons did not have a week 53, so the week 53 value is an average of week 52 and week 1.

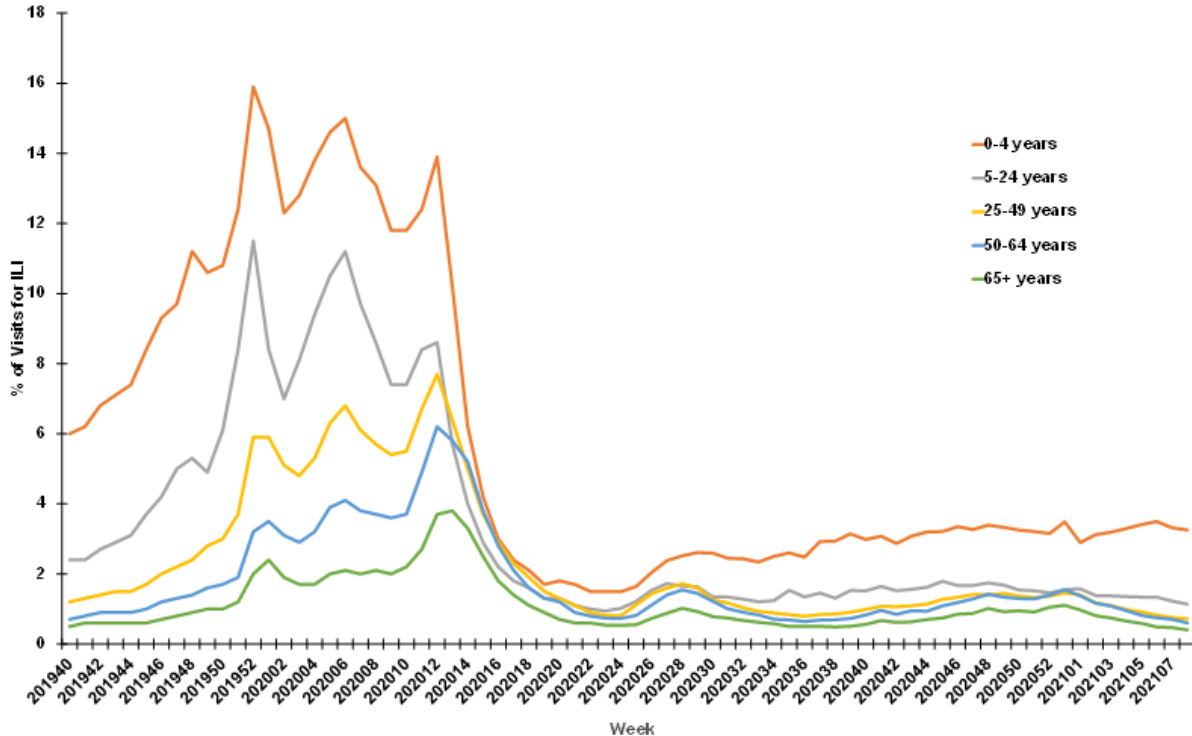
## Influenza-Like Illness Surveillance (ILINet)

Percent of outpatient visits for ILI, by season.

FluView, Week 8 (ending February 27, 2021)

Source: CDC FluView—  
<https://www.cdc.gov/flu/weekly/index.htm>

Percentage of Visits for Influenza-like Illness (ILI) by Age Group  
Reported by the U.S. Outpatient Influenza-like Illness Surveillance Network (ILINet),  
Weekly National Summary, 2019-2020 and 2020-2021 Seasons



## Influenza-Like Illness Surveillance (ILINet)

Percent of outpatient visits for ILI, 2019-20 and 2020-21 seasons, by age group.

FluView, Week 8 (ending February 28, 2021)

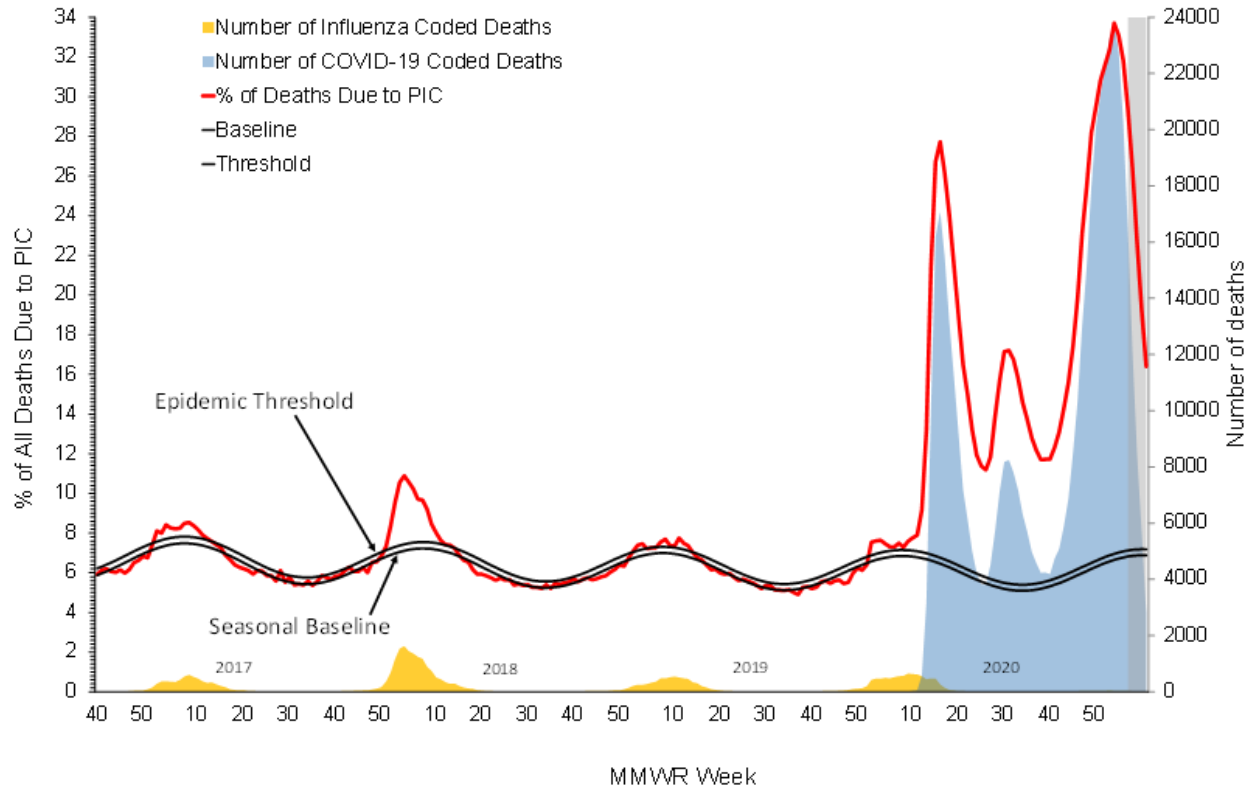
Source: CDC FluView—  
<https://www.cdc.gov/flu/weekly/index.htm>

# Influenza-Associated Hospitalizations (FluSurv-NET)

- October 1, 2020—February 27, 2021
  - 14 states reported 193 laboratory confirmed influenza hospitalizations
  - Overall cumulative hospitalization rate of 0.7 per 100,000 population.
  - Lower than any season since routine data collection began in 2005, including the 2011-12 season (for which the rate was 2.3 times higher at this timepoint).

Source: CDC FluView—<https://www.cdc.gov/flu/weekly/index.htm>

**Pneumonia, Influenza, and COVID-19 Mortality from  
the National Center for Health Statistics Mortality Surveillance System  
Data through the week ending February 27, 2021, as of March 4, 2021**



**Pneumonia, Influenza,  
and COVID-19 Mortality  
(NCHS)**

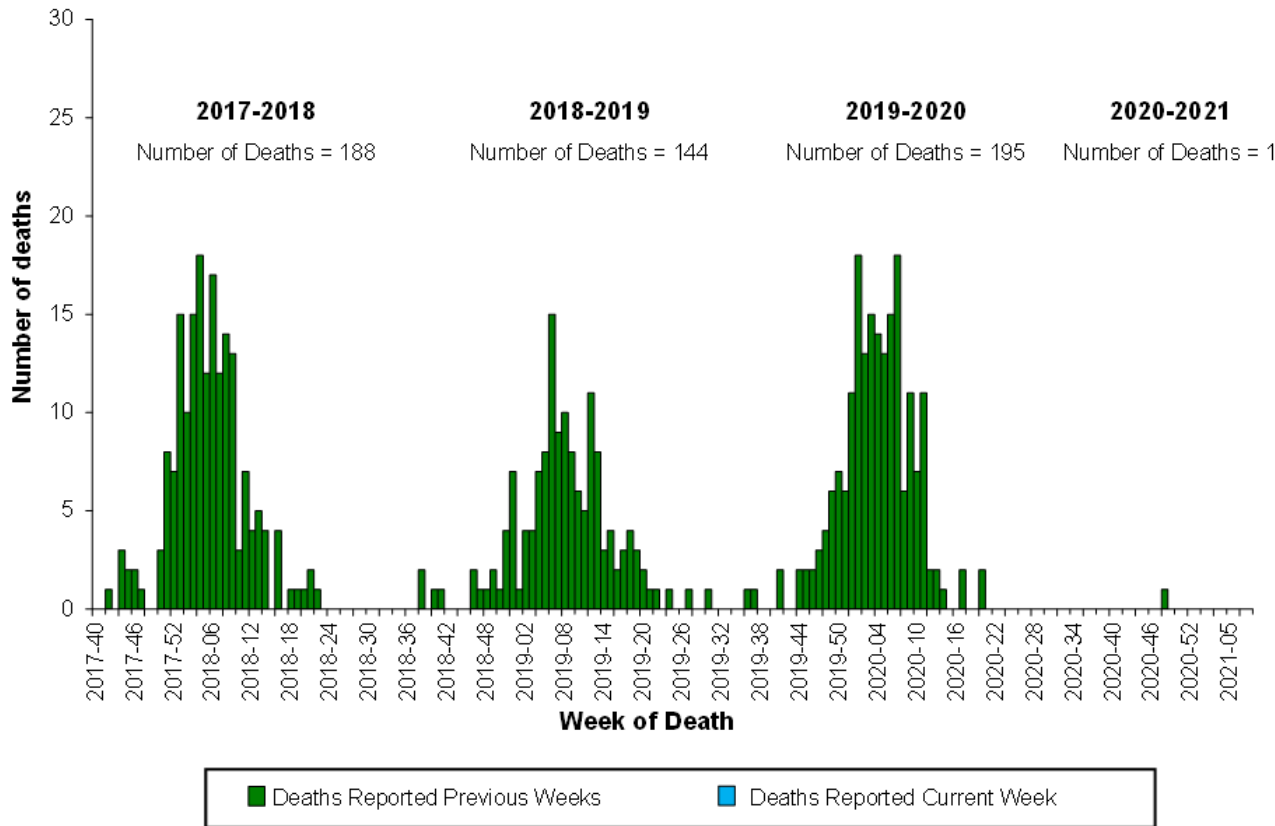
Percent of deaths coded  
for pneumonia,  
influenza, and COVID-19

FluView, Week 8 (ending  
February 27, 2021; data  
as of March 4, 2021)

*Source: CDC FluView—  
[https://www.cdc.gov/flu/  
weekly/index.htm](https://www.cdc.gov/flu/weekly/index.htm)*



**Number of Influenza-Associated Pediatric Deaths by Week of Death, 2017-2018 Season to 2020-2021 Season**



**Pediatric deaths associated with laboratory-confirmed influenza**

FluView, Week 8  
(ending February 27, 2021)

Source: CDC FluView—  
<https://www.cdc.gov/flu/weekly/index.htm>

# Influenza Activity Summary

- U.S. Influenza activity for the 2020-21 season has been low
  - Percent of influenza specimens testing positive reported by clinical laboratories is unusually low
  - Influenza-like illness (ILI) activity below national baseline
  - Cumulative hospitalization rate 0.7/100,000 (lowest since 2005; lower than the 2011-12 season)
- Low activity likely multifactorial, related to COVID-19 mitigation strategies (masks, social distancing, school closures, less/restricted travel)
- Not possible to predict extent and timing of influenza activity for 2021-22

# Influenza Vaccine Effectiveness (VE)

# Influenza Vaccine Effectiveness (VE) for 2020-21

- Due to low influenza activity, no interim VE estimates available
- CDC networks continue to collect data and monitor activity
- Estimates later in the season dependent upon sufficient influenza activity within the CDC vaccine effectiveness networks

*Thank you!*

A decorative horizontal bar at the bottom of the slide, composed of several colored rectangular segments: a long grey segment on the left, followed by purple, olive green, maroon, yellow, and blue segments on the right.