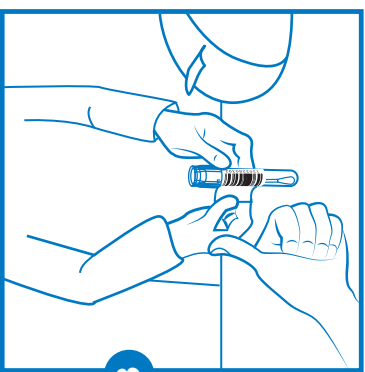




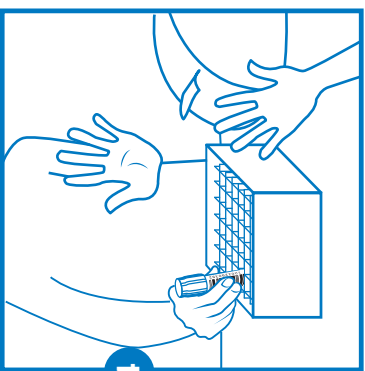
When you arrive at the drop-off location, you will provide identification.



Hand the bagged sample to the drop-off technician, who will inspect it. If there is a noticeable issue, you will step aside to a re-testing station.



The technician will print the barcode, show it to you to confirm that the information is correct, and affix it to your tube.

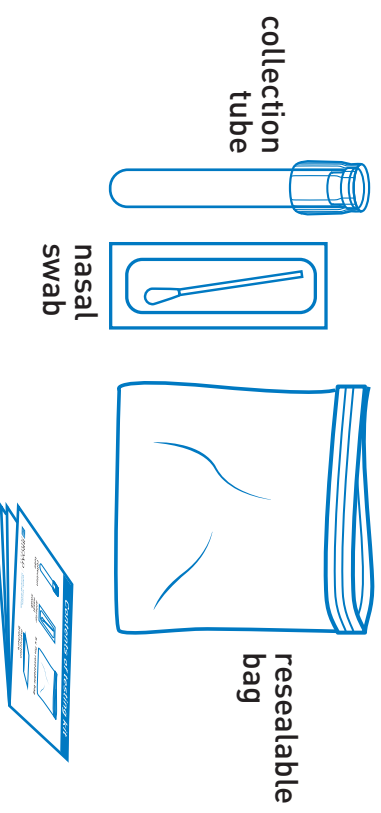


The technician will place the sample in a box rack. You are done!

How to deliver a nasal swab sample

Contents of testing kit

Unfold booklet and follow complete instructions.



See reverse side for kit contents and open booklet for full instructions.



IMPORTANT
Read instructions entirely. Failure to follow the instructions entirely may lead to false or incomplete results.

Only collect the sample on the day you are scheduled to drop it off and only drop off your own sample.



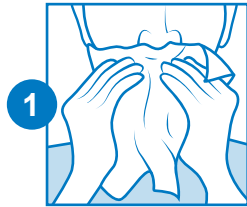
CLINICAL RESEARCH
SEQUENCING PLATFORM

instruction
brochure

How to collect a nasal swab sample



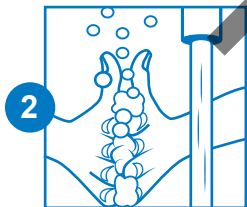
Read instructions entirely. Failure to follow the instructions entirely may lead to false or incomplete results. Only collect the sample on the day you are scheduled to drop it off and only drop off your own sample.



1

Blow your nose.

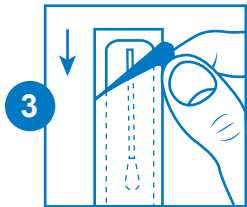
Thoroughly blow and wipe your nose to clear thick mucus [snot].



2

Wash your hands.

Wash with soap and water for at least 20 seconds or use hand sanitizer and dry completely.

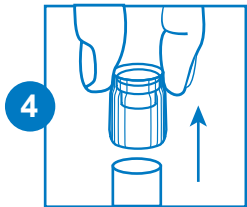


3

Open the swab package.

Starting from the handle end of the swab package, peel open the paper backing. Pull swab out of its packaging by the handle.

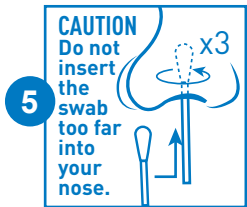
Note: Do not touch the soft tip with your hands or lay it down on any surface.



4

Remove the cap of the collection tube.

Keep the cap and collection tube nearby.

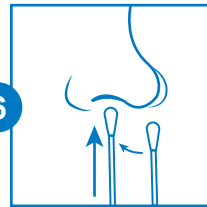


5

Rotate swab tip in first nostril, 3 times.

Insert the soft tip into one nostril, until it is no longer visible. Using medium pressure against the inside of your nostril the whole time, rub the swab in a large circular motion at least 3 times.

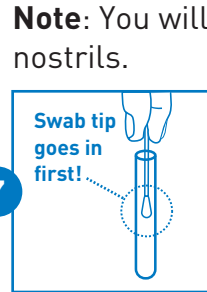
Note: Insert less than 1 inch into the nostril for adults and less than 1/2 an inch for younger children.



6

Rotate swab tip in other nostril, 3 times.

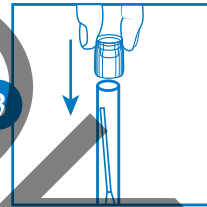
Repeat the previous step in the second nostril, using the same end of the swab.



7

Put swab into the collection tube.

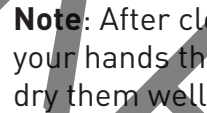
The soft tip of the swab that went into your nose should go into the tube first.



8

Press the cap of the collection tube firmly closed.

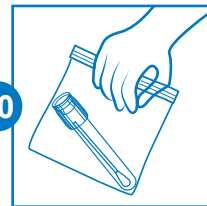
Make sure the top is closed tightly.



9

Put collection tube into the sealable bag.

Seal the bag closed and write your name on it.



10

Bring the sealable bag to your designated test collection site *today*.

See instructions on the reverse side.

Questions? Call support line at (617) 714-7590 or e-mail crsp-careevolve@broadinstitute.org

This product has not been FDA cleared or approved, but has been authorized for emergency use by FDA under an EUA for use by authorized laboratories. This product has been authorized only for the detection of nucleic acid from SARS-CoV-2, not for any other viruses or pathogens. The emergency use of this product is only authorized for the duration of the declaration that circumstances exist justifying the authorization of emergency use of in vitro diagnostics for detection and/or diagnosis of COVID-19 under Section 564(b)(1) of the Federal, Food, Drug, and Cosmetic Act, 21 U.S.C. § 360bbb-3(b)(1), unless the declaration is terminated or authorization is revoked sooner.