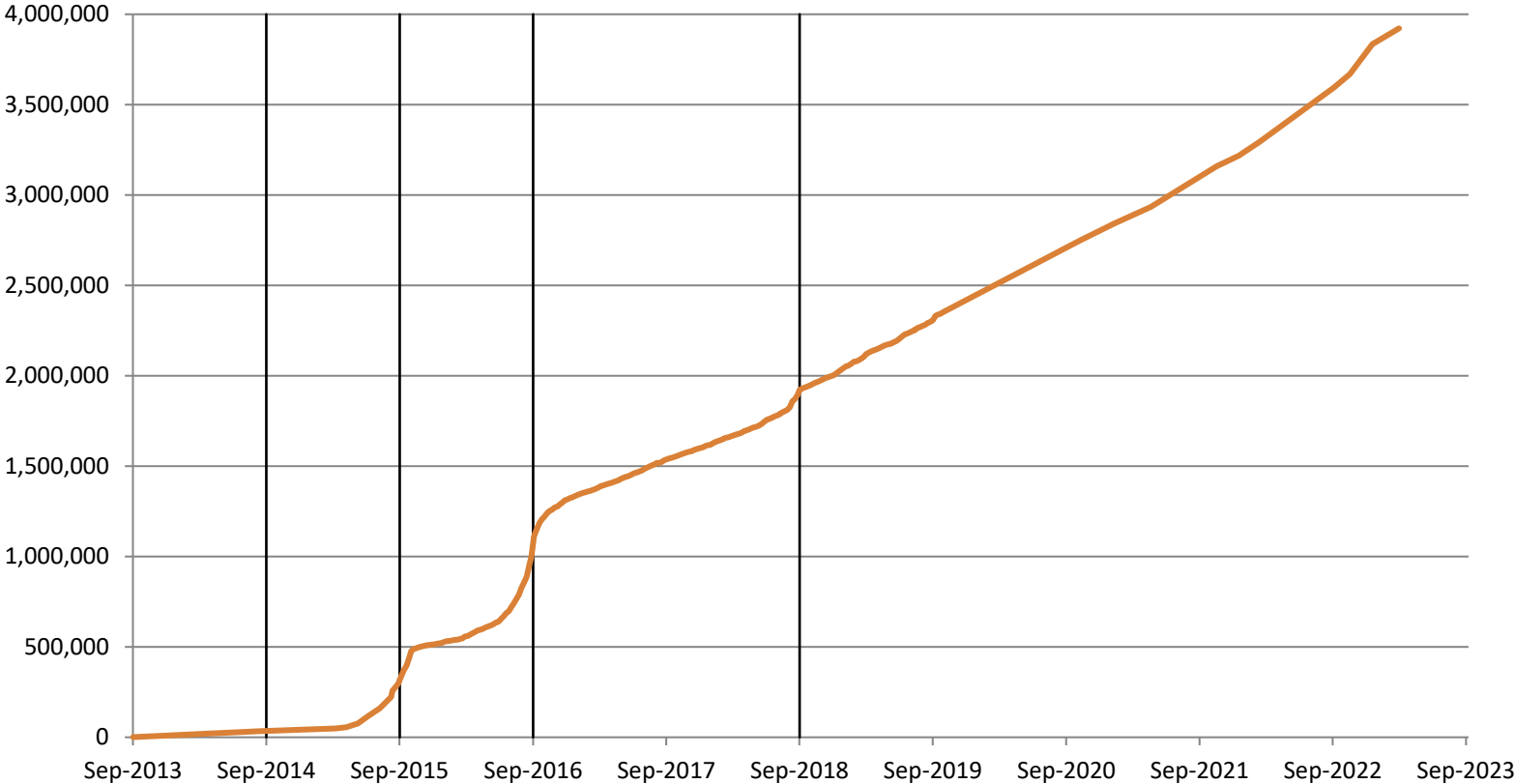


GUDID Records and Submission Compliance Dates

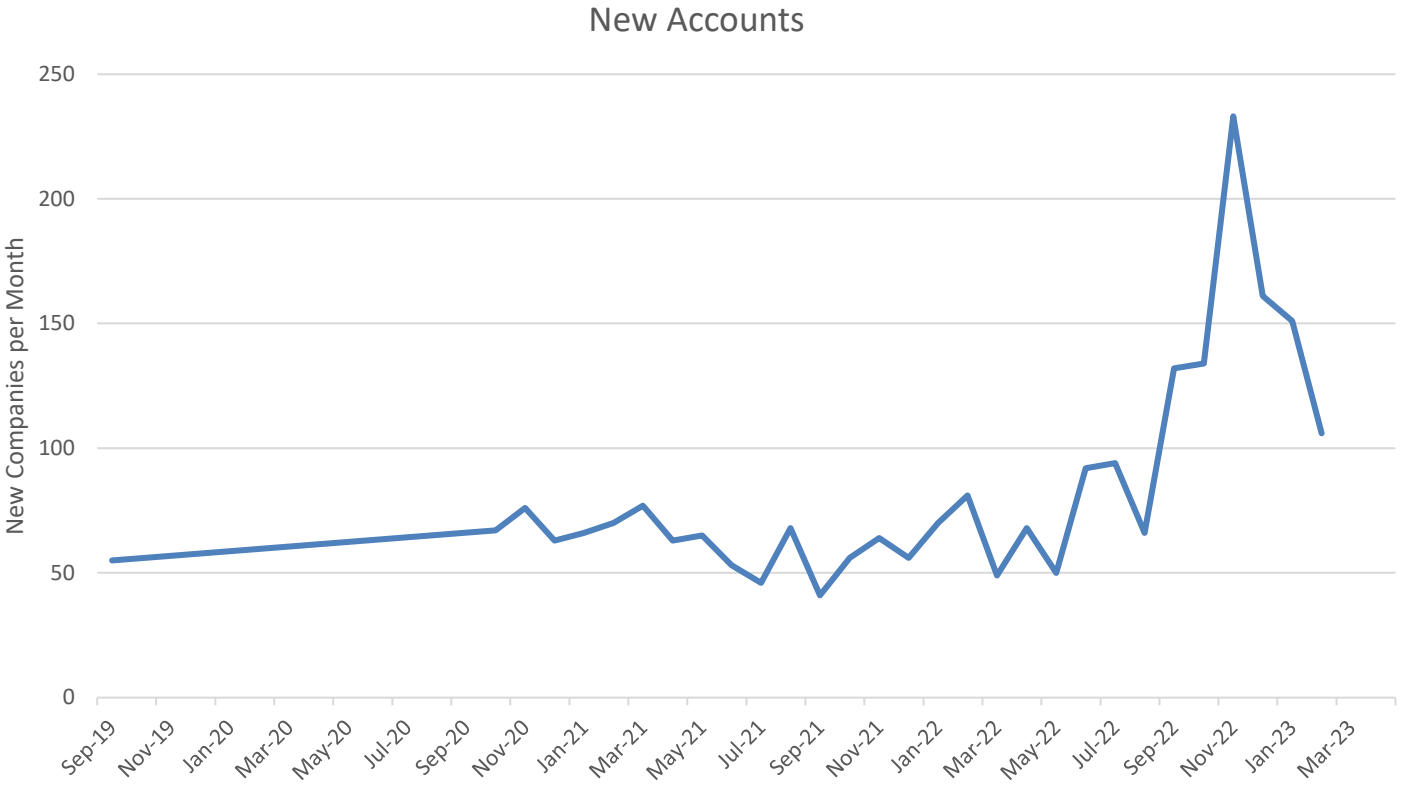


Data Current as of Mar 24, 2023



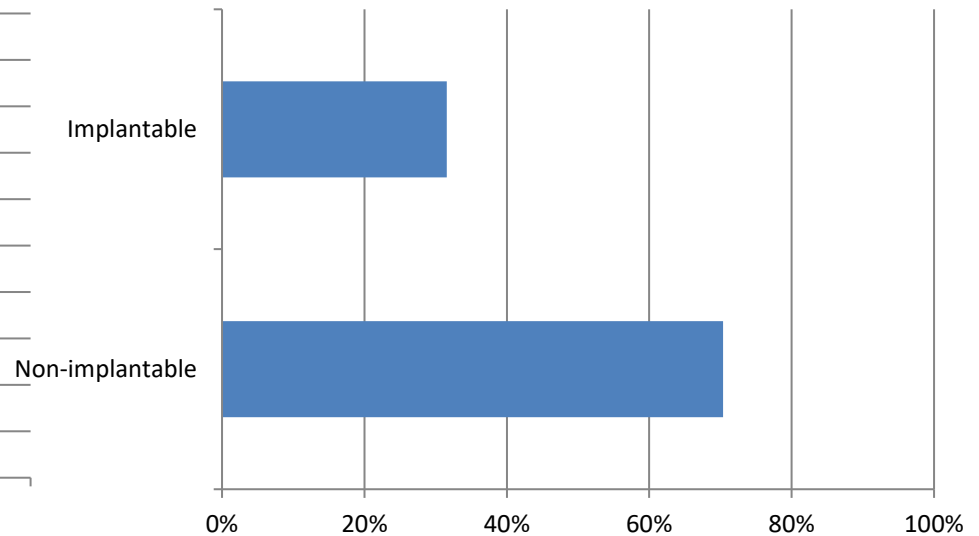
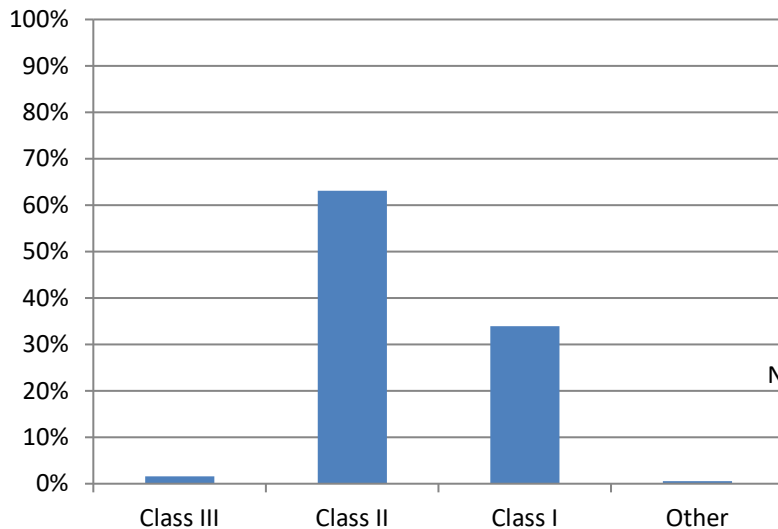
New Companies in GUDID Each Month

Data Current as of Mar 24, 2023



Most GUDID Records are Class II; About 32% are Associated with Implantables

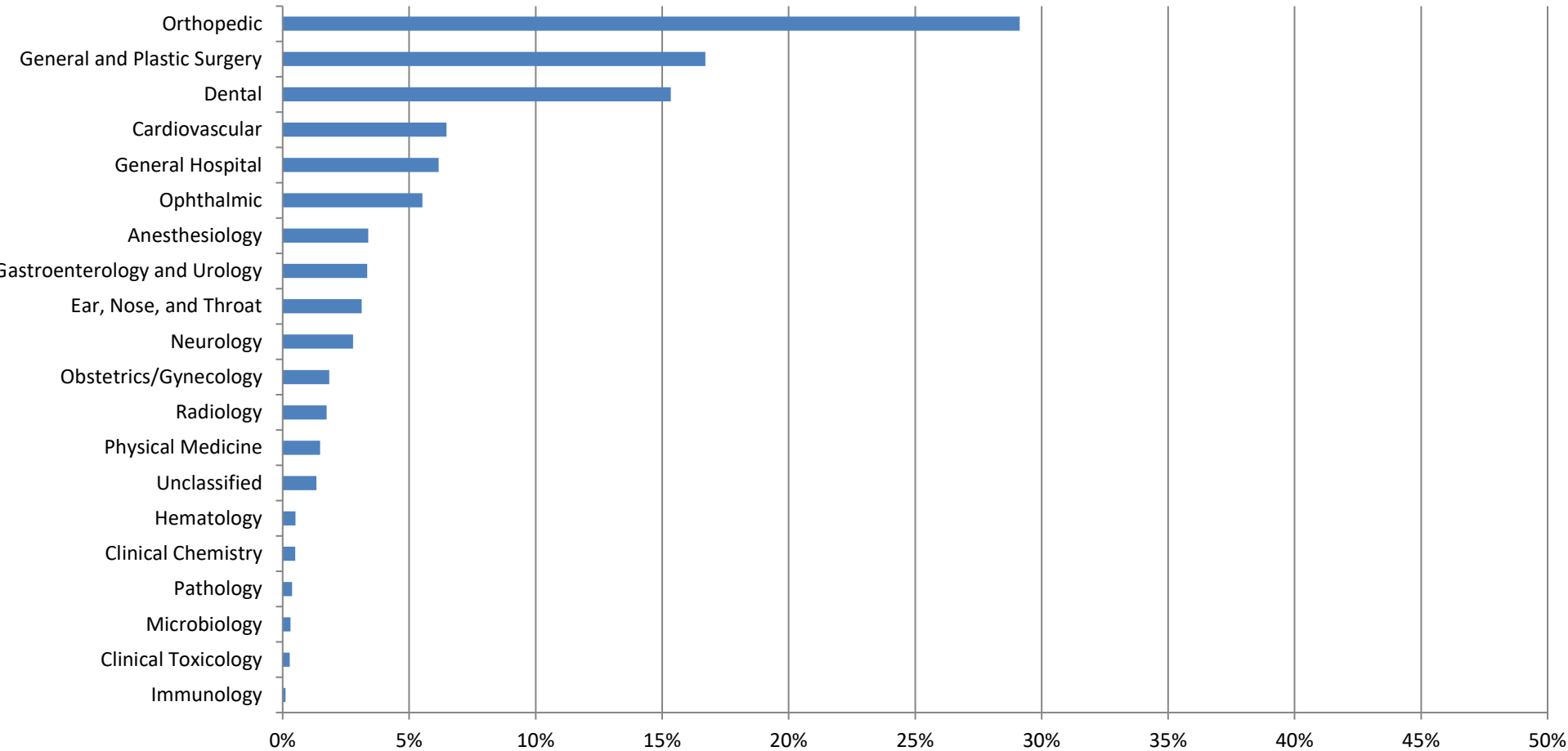
*“Implantable” Devices are those Assigned FDA Product Codes Associated with Implantable Devices, Systems and Accessories
Data Current as of Mar 24, 2023*



Medical Specialties in GUDID

Data Based on FDA Product Codes

Data Current as of Mar 24, 2023



GUDID Labeler Locations by Country

Data Current as of Mar 24, 2023

