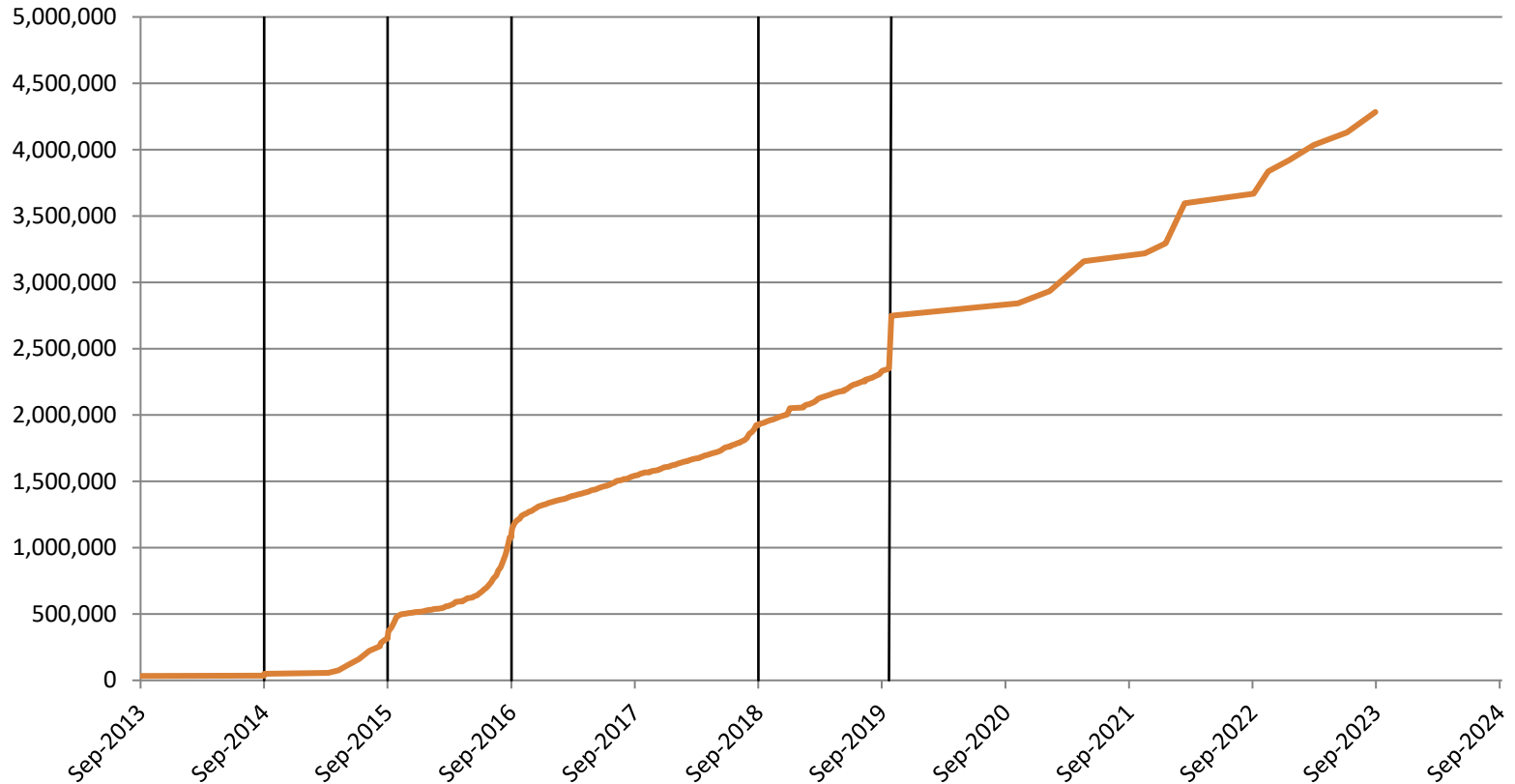


GUDID Records and Submission Compliance Dates



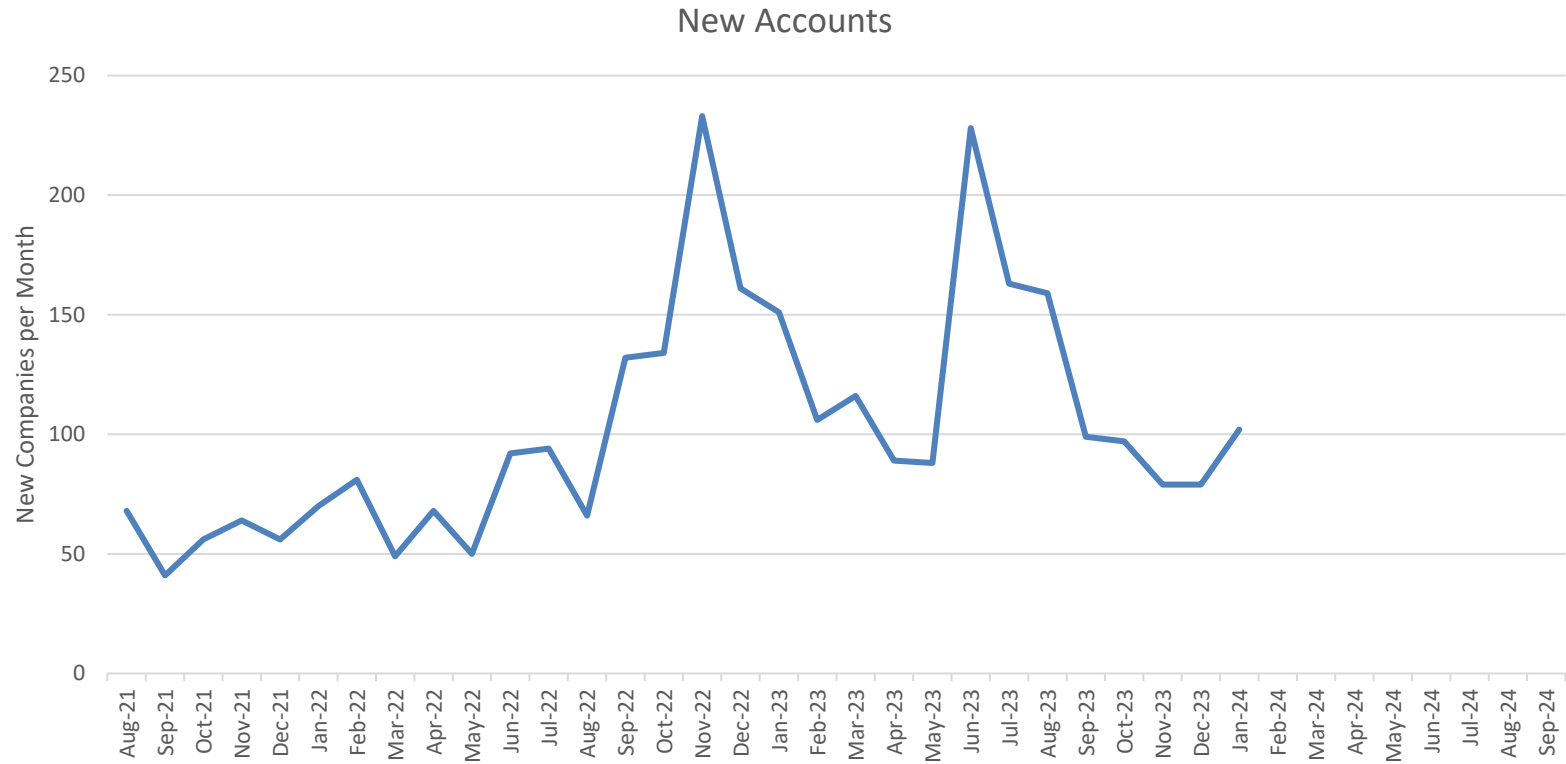
Data Current as of Feb 1, 2024





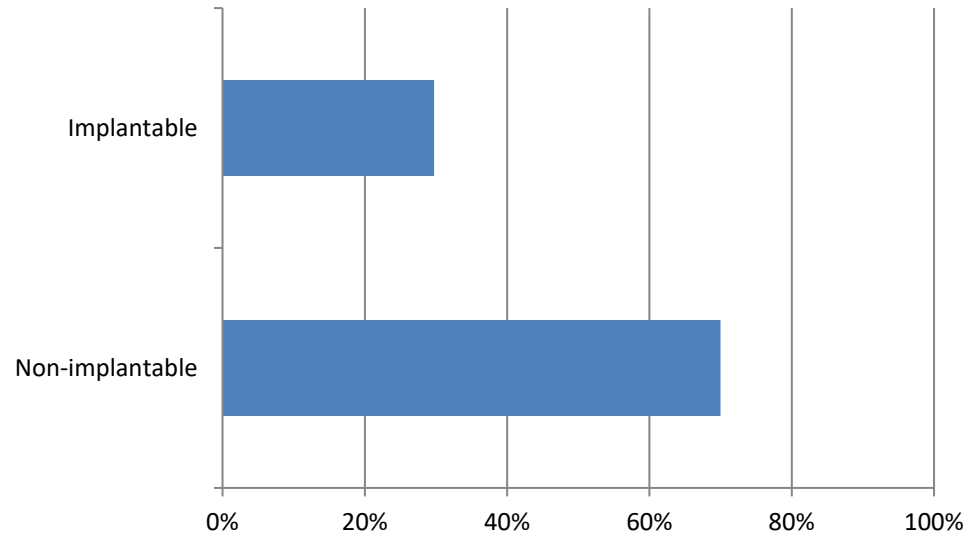
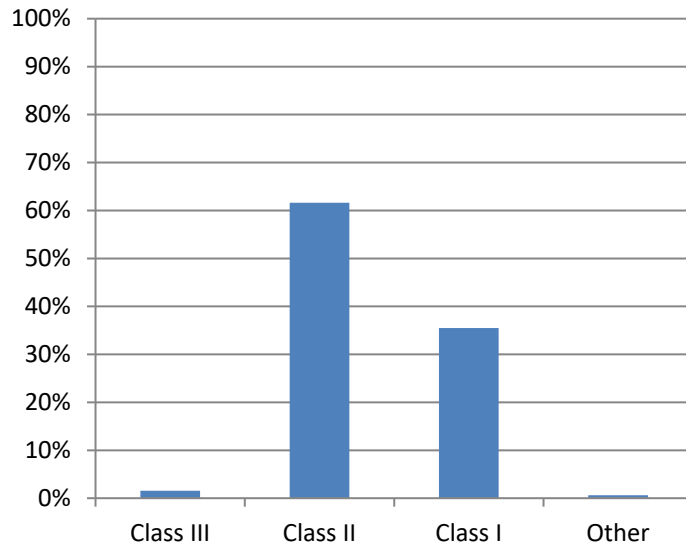
New Companies in GUDID Each Month

Data Current as of Feb 1, 2024



Most GUDID Records are Class II; About 31% are Associated with Implantables

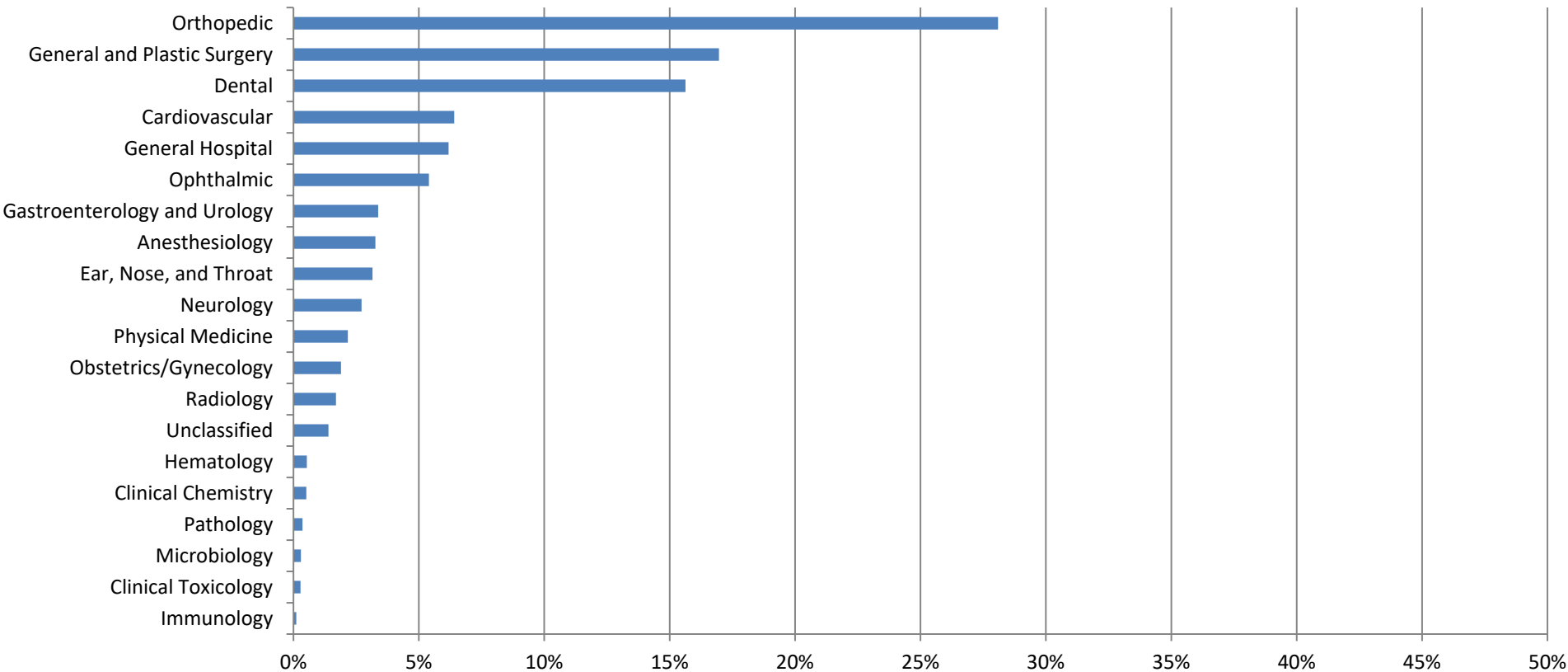
*“Implantable” Devices are those Assigned FDA Product Codes Associated with Implantable Devices, Systems and Accessories
Data Current as of Feb 1, 2024*



Medical Specialties in GUDID

Data Based on FDA Product Codes

Data Current as of Feb 1, 2024



Most Frequent FDA Product Code Terms in GUDID



Data Current as of Feb 1, 2024



GUDID Labeler Locations by Country

Data Current as of Feb 1, 2024

