

June 26, 2024

Totally Cool, Inc. Recalls All Ice Cream Products Because of Possible Health Risk

The products included in the recall is:

Brand	Product	Affected Lots
Friendly's	60 fl oz Celebration Ice Cream Cake 40 fl oz Strawberry Krunch Ice Cream Cake	All Dates Between: 05/20/2024 to 05/28/2025 With Plant Code: 24-65, 24-0065, 2465, 240065 See Packaging, Example: 05/20/25 15:30 24-65

Abilyn's Frozen Bakery	Abilyn's Frozen Bakery Vanilla & Chocolate 30 fl oz 6" Ice Cream Cake Abilyn's Frozen Bakery Vanilla & Chocolate 60 fl oz 8" Ice Cream Cake Abilyn's Frozen Bakery "For Love of Chocolate" Ice Cream Cake Abilyn's Frozen Bakery "Cookies & Cream" Ice Cream Cake Abilyn's Frozen Bakery "Cookie Dough" Ice Cream Cake	All Best By Dates Between: 05/20/2024 to 05/28/2025 With Plant Code: 24-0065 See Packaging, Example: 15:30 24-0065 Best By: 05/20/25
------------------------	--	--

Hershey's Ice cream	38 fl oz vanilla and chocolate flavored ice cream cake 110 fl oz vanilla and chocolate flavored ice cream cake 4 fl oz Cookies & Cream Ice Cream Cones 4 fl oz Cookies & Cream Polar Bear Ice Cream Sandwiches	All Codes Between: Cakes: 2305140 to 2405170 Cones: 3174 to 4047 Sandwiches: 2307187 to 2406163 See Packaging for Cakes and Sandwiches, Example: 2405140 11:42
---------------------	---	--

Yelloh!	4 fl oz Vanilla Nut Ice Cream Sundae Cones 4 fl oz Vanilla Fudge Ice Cream Sundae Cones 4 fl oz Pecan Praline Ice Cream Sundae Cones 4 fl oz Chip & Mint Ice Cream Sundae Cones 4 fl oz Cookies & Cream Ice Cream Sandwiches	All Codes Between: Cones: 6T3227 to 6T4157 Sandwiches: 6T3115 to 6T4171 See Packaging for Cones and Sandwiches, Example: 6T4171 07:16
---------	--	--

	4 fl oz Chocolate Chip Ice Cream Sandwiches	
--	---	--

Jeni`s	3.5 fl oz Chocolate Silk Pie Ice Cream Sandwiches 3.5 fl oz Key Lime Pie Frozen Dessert 3.5 fl oz Mint Chocolate Truffle Pie Ice Cream Sandwiches 3.5 fl oz Triple Berry Tart Pie Ice Cream Sandwiches	All Best by Dates: 07/24/25 to 05/23/2026 All Codes Between: 23205 to 24144 With Plant Code: 2465 See Packaging, Example: Best By: 05/23/2026 Lot 24144 07:03 2465
--------	---	---

Cumberland Farms	<p>Cumberland Farms, Farmhouse Premium Ice Cream Sandwich, Rich Vanilla, 4 fl oz</p> <p>Cumberland Farms, Farmhouse Premium Ice Cream Sandwich, Marvelous Mint, 4 fl oz</p>	<p>All Best by Dates Between: 11/30/25 to 12/04/25</p> <p>With Plant Code: 2465</p> <p>See Packaging, Example: Best By: 12/05/2025 07:17 2465</p>
------------------	---	---

The Frozen Farmer	<p>4 fl oz Elf On the Shelf Santa`s Cookies Ice Cream Sandwiches</p> <p>16 fl oz Elf On the Shelf Santa`s Cookies</p> <p>16 fl oz Strawberry Sorbet Pints</p> <p>16 fl oz Raspberry Sorbet Pints</p> <p>16 fl oz Orange Cream Frobert Pints</p> <p>16 fl oz Watermelon Sorbet Pints</p>	<p>All Best by Dates Between: Sandwiches: 09/04/25 to 12/07/25</p> <p>All Best by Dates Between: Pints: 09/05/25 to 07/30/26</p> <p>With Plant Code: 24-65</p> <p>See Packaging, Example: Best By: 07/30/2026 24-65 14:05</p>
-------------------	---	---

<p>Marco</p>	<p>3.8 fl oz Dulce De Leche Ice Cream Sandwiches</p> <p>3.8 fl oz Vanilla Chai Ice Cream Sandwiches</p> <p>16 fl oz Dulce De Leche & Cookies Ice Cream Pints</p> <p>16 fl oz Turkish Mocha Ice Cream Pints</p> <p>16 fl oz Vanilla Chai Ice Cream Pints</p> <p>16 fl oz Spicy Peanut Butter Caramel and Peanut Butter Caramel Ice Cream Pints</p> <p>16 fl oz Moroccan Honey Nut Ice Cream Pints</p> <p>16 fl oz Green Tea White Chocolate Ice Cream Pints</p> <p>16 fl oz Aztec Chocolate Ice Cream Pints</p>	<p>Sandwiches:</p> <p>All Best by Dates:</p> <p>11/28/25 to 11/29/25 with Codes Between: 2405149 to 2405150</p> <p>Pints:</p> <p>All Best by Dates:</p> <p>06/07/24 to 12/11/25 with Codes Between: 2312341 to 2406163</p> <p>With Plant Code: 2465</p> <p>See Packaging for Pints, Example:</p> <p>Best By: 12/11/2025</p> <p>14:11 24-65 2406163</p> <p>See Packaging for Sandwiches, Example:</p> <p>Best By: 12/11/2025</p> <p>Lot 2406163 07:09 2465</p>
--------------	--	--

<p>ChipWich</p>	<p>4 fl oz The Original Vanilla Chocolate Chip Ice Cream Sandwich 10 Club Pack, 3 Pack, 24 Pack</p> <p>16 fl oz Vanilla Chocolate Chip Ice Cream Pint</p> <p>16 fl oz Mint Chocolate Chip Ice Cream Pint</p>	<p>All Best by Dates Between: Sandwiches: Best by dates: 02/23/25 to 12/21/25</p> <ul style="list-style-type: none"> • Club pack (10 units): Lot# 23298-24172 • Single Serve: Lot# 23298-24164 • 3 packs: Lot# 23298-24136 <p>Pints: 07/25/2024 to 01/27/2025</p> <p>With Plant Code: 24-65, 24-0065</p> <p>See Packaging for 10 Club Pack and Retail 3 Pack Sandwiches Example: Best By: 12/21/2025 24-65 14:17 24173</p> <p>See Packaging for Single Serve Sandwiches Example: BB: 12/14/25 24166 13:04 24-0065</p> <p>See Packaging for Pints Example: Best By: 01/27/2025 14:21 24-65</p>
<p>AMAFruits</p>	<p>3 gal Acai Sorbet Tubs</p> <p>3 gal Dragon Fruit Sorbet Tubs</p>	<p>All Best by dates and Codes: 3 / 2 8 / 2 4 , 3 / 2 9 / 2 4 3 / 3 0 / 2 4 , 0 5 / 0 1 / 2 5 , 0 5 / 0 2 / 2 5 , 0 5 / 0 3 / 2 5 , 0 5 / 0 4 / 2 5 , 6 / 2 4 / 2 5 , 6 / 2 8 / 2 5 , 6 / 2 9 / 2 5 , 6 / 3 0 / 2 5 , 6 / 0 1 / 2 5 , 7 / 2 8 / 2 5 , 8 / 2 8</p>

		/ 25, 8/31/25, 09/05/25, 231132 4
--	--	---

		2311325 2311326 2311331 2311332 2311333 2311334 2401031 2401032 2401033 2401036 2401037 2401038 2401039 2401040 2402043 2402044 2402057 2402058 402059 2403085 2403086 2403087 2403088 2404120 2404121 2405142 2406158 2406159 See Packaging Example: Best By: 07/28/25 2307209
--	--	---

Taharka	16 fl oz Honey Graham Ice Cream Pints 16 fl oz Key Lime Pie Ice Cream Pints	Best By date: 10/01/25 With Plant Code: 24-65 See Packaging Example: Best By: 10/01/2025 24-65 17:02
---------	--	--

Dolcezza Gelato	<p>16 fl oz Mascarpone & Berries Ice Cream Pints</p> <p>16 fl oz Roasted Strawberry Ice Cream Pints</p> <p>16 fl oz Vanilla Bean Ice Cream Pints</p> <p>16 fl oz Peanut Butter Mash and Peanut Butter Cup Ice Cream Pints</p> <p>16 fl oz Dulce de Leche & Cookies Ice Cream Pints</p> <p>16 fl oz Stracciatella Ice Cream Pints</p>	<p>All Best By Dates Between: 05/20/24 to 06/20/25</p> <p>With Plant Code: 24-65</p> <p>See Packaging Example: Best By: 06/12/2025 14:34 24-65</p>
-----------------	--	--

	<p>16 fl oz Peanut Stracciatella Ice Cream Pints</p> <p>16 fl oz Swiss Chocolate Ice Cream Pints</p> <p>16 fl oz Coffee & Cookies Ice Cream Pints</p> <p>16 fl oz Hot Cocoa Ice Cream Pints</p> <p>16 fl oz Sugar Cookie Dough Ice Cream Pints</p> <p>16 fl oz Dark Chocolate Ice Cream Pints</p> <p>16 fl oz Dark Chocolate Fudge Ice Cream Pints</p>	
LaSalle	16 fl oz Chocolate Ice Cream Pints	All Best By Dates Between: 11/18/24 to 10/25/25

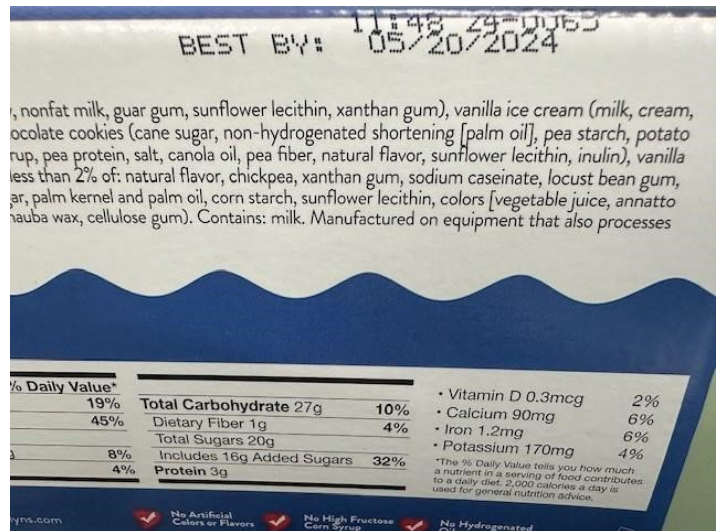
	<p>16 fl oz Vanilla Ice Cream Pints</p> <p>16 fl oz Cherry Vanilla Ice Cream Pints</p> <p>16 fl oz Vanilla Mango Ice Cream Pints</p> <p>16 fl oz Vanilla Raspberry Ice Cream Pints</p> <p>16 fl oz Vanilla Fudge Ice Cream Pints</p> <p>16 fl oz Dulce De Leche Ice Cream Pints</p> <p>16 fl oz Cookies & Cream Ice Cream Pints</p>	<p>With Plant Code: 24-65</p> <p>See Packaging Example: Best By: 10/25/2025 24-65 17:05</p>
	<p>16 fl oz Butter Pecan Ice Cream Pints</p>	


Example Photographs

Friendly's Products



Abilyn's Frozen Bakery Products



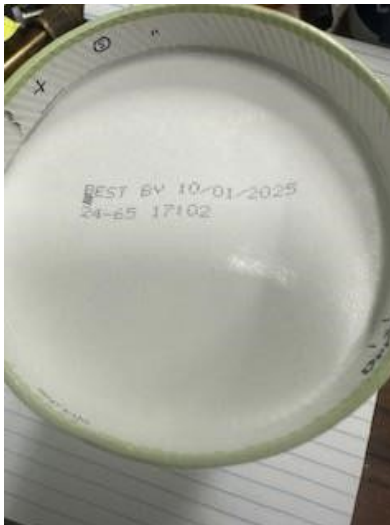
<p>REAL INGREDIENTS</p> <p>ABILYN'S Frozen Bakery</p> <p>Ice Cream Cake</p> <p>Cookies 'n Cream</p> <p>as always, Gluten FREE</p> <p>No Artificial Colors or Flavors No High Fructose Corn Syrup No Hydrogenated Oils</p> <p>Serves 8 - 10 (4 oz) (147g) & (16g) Best if consumed 21-30 minutes before serving.</p>	<p>REAL INGREDIENTS</p> <p>ABILYN'S Frozen Bakery</p> <p>Ice Cream Cake</p> <p>Chocolate Chip Cookie Dough</p> <p>as always, Gluten FREE</p> <p>No Artificial Colors or Flavors No High Fructose Corn Syrup No Hydrogenated Oils</p> <p>Serves 8 - 10 (4 oz) (147g) & (16g) Best if consumed 21-30 minutes before serving.</p>
<p>ABILYN'S Frozen Bakery</p> <p>Ice Cream Cake</p> <p>Cookies 'n Cream</p> <p>as always, Gluten FREE</p> <p>Look at all that GOODNESS!</p> <p>REAL INGREDIENTS</p> 	<p>ABILYN'S Frozen Bakery</p> <p>Ice Cream Cake</p> <p>Chocolate Chip Cookie Dough</p> <p>as always, Gluten FREE</p> <p>Look at all that GOODNESS!</p> <p>REAL INGREDIENTS</p> 

<p>REAL INGREDIENTS</p> <p>ABILYN'S Frozen Bakery</p> <p>Ice Cream Cake</p> <p>For the Love of Chocolate</p> <p>as always, Gluten FREE</p> <p>No Artificial Colors or Flavors No High Fructose Corn Syrup No Hydrogenated Oils</p> <p>Serves 8 - 10 (4 oz) (147g) & (16g) Best if consumed 21-30 minutes before serving.</p>	<p>REAL INGREDIENTS</p> <p>ABILYN'S Frozen Bakery</p> <p>Ice Cream Cake</p> <p>Vanilla & Chocolate</p> <p>as always, Gluten FREE</p> <p>No Artificial Colors or Flavors No High Fructose Corn Syrup No Hydrogenated Oils</p> <p>Serves 8 - 10 (4 oz) (147g) & (16g) Best if consumed 21-30 minutes before serving.</p>
<p>ABILYN'S Frozen Bakery</p> <p>Ice Cream Cake</p> <p>For the Love of Chocolate</p> <p>as always, Gluten FREE</p> <p>Look at all that GOODNESS!</p> <p>REAL INGREDIENTS</p> 	<p>ABILYN'S Frozen Bakery</p> <p>Ice Cream Cake</p> <p>Vanilla & Chocolate</p> <p>as always, Gluten FREE</p> <p>Look at all that GOODNESS!</p> <p>REAL INGREDIENTS</p> 

Hershey's Products



Taharka Products

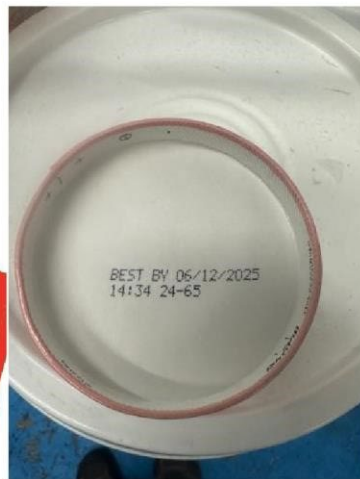
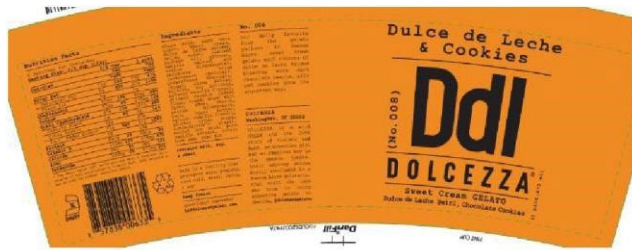


AMAFruits Products



Dolcezza Products











Yelloh! Cookies & Cream
Ice Cream Sandwiches

Nutrition Facts	
Serving Size 1 Sandwich (11g)	
Calories 230	
% Daily Value*	
Total Fat	10g
Sodium	100mg
Total Sugar	15g
Total Protein	5g

*Percent Daily Values are based on a diet of other people's secrets.

Yelloh! Chocolate Chip
Cookie Sandwich

Nutrition Facts	
Serving Size 1 Sandwich (11g)	
Calories 270	
% Daily Value*	
Total Fat	10g
Sodium	100mg
Total Sugar	15g
Total Protein	5g

*Percent Daily Values are based on a diet of other people's secrets.

Yelloh! Cookies & Cream Ice Cream Sandwiches

NO ARTIFICIAL FLAVORS
MADE WITH REAL CREAM

230 CALORIES

Yelloh! Cookies & Cream Ice Cream Sandwiches

Cookies and cream ice cream between two chocolate cookies

24 FL. OZ. (709mL)

CONTAINS 6 SANDWICHES • CHIPPED ICE CREAM

#370

cookies & Cream Ice Cream Sandwiches

Yelloh! Chocolate Chip Cookie Sandwich

NO ARTIFICIAL FLAVORS
COLORS FROM NATURAL SOURCES
MADE WITH REAL CREAM

270 CALORIES

Yelloh! Chocolate Chip Cookie Sandwich

Vanilla ice cream between two chocolate chip cookies

2 FL. OZ. (107mL)

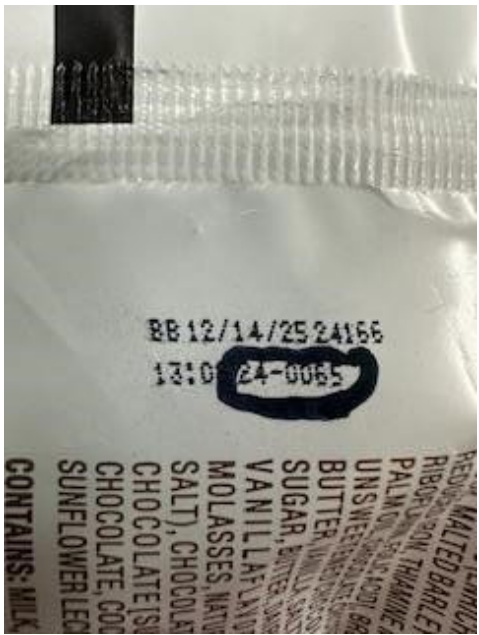
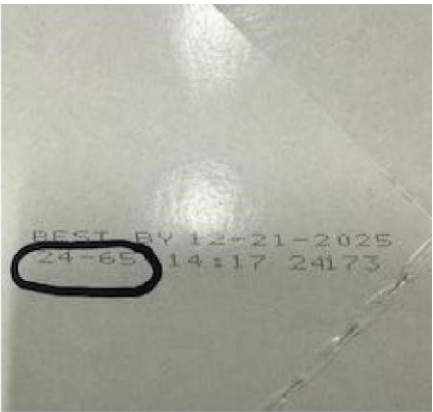
#371

Chocolate Chip Cookie Sandwich



ChipWich Products





LaSalle Products

LaSalle Flavors



Ingredients: Milkfat and Nonfat Milk, Sugar, Pecans (Roasted), Butter & Salt, Corn Syrup, Mono and Diglycerides, Guar Gum, Cellulose Gum, Carrageenan, Natural Flavor, Vanilla Extract, Annatto Color

Allergens: Milk, Peans
Produced on equipment that also processes Peanuts, Tree Nuts and Eggs.
Contains a Bioengineered Food ingredient.

Nutrition Facts	
4 servings per container	
Serving size 1/2 cup (125g)	
Calories 340 1360	
Total Fat 12g 24%	
Saturated Fat 7g 14%	
Cholesterol 25mg 5%	
Sodium 100mg 2%	
Total Sugar 25g 50%	
Total Protein 2g 4%	
Dietary Fiber 1g 2%	
Total Fiber 1g 2%	
Total Carbohydrate 32g 6%	
Total Fat 12g 24%	
Saturated Fat 7g 14%	
Cholesterol 25mg 5%	
Sodium 100mg 2%	
Total Sugar 25g 50%	
Total Protein 2g 4%	
Dietary Fiber 1g 2%	
Total Fiber 1g 2%	
Total Carbohydrate 32g 6%	

71891 37408

LaSalle Flavors



Ingredients: Milkfat and Nonfat Milk, Sugar, Corn Syrup, Mango Purée, Mono and Diglycerides, Guar Gum, Modified Cellulose, Carrageenan, and 40 Natural Flavor, Vanilla Extract, Annatto Color, Citric Acid

Allergens: Milk
Produced on equipment that also processes Peanuts, Tree Nuts and Eggs.
Contains a Bioengineered Food ingredient.

Nutrition Facts	
4 servings per container	
Serving size 1/2 cup (125g)	
Calories 190 760	
Total Fat 10g 20%	
Saturated Fat 6g 12%	
Cholesterol 25mg 5%	
Sodium 100mg 2%	
Total Sugar 25g 50%	
Total Protein 2g 4%	
Dietary Fiber 1g 2%	
Total Fiber 1g 2%	
Total Carbohydrate 32g 6%	

71891 37416

LaSalle Flavors



Ingredients: Milkfat and Nonfat Milk, Black Cherries, Chermoula, High Fructose Corn Syrup, Corn Syrup, Natural Flavor, Citric Acid, Red 40, Blue 1, Sugar, Corn Syrup, Mono and Diglycerides, Guar Gum, Cellulose Gum, Carrageenan, Natural Flavor (Annatto Color)

Allergens: Milk, Wheat
Produced on equipment that also processes Peanuts, Tree Nuts and Eggs.
Contains a Bioengineered Food ingredient.

Nutrition Facts	
4 servings per container	
Serving size 1/2 cup (125g)	
Calories 260 1040	
Total Fat 12g 24%	
Saturated Fat 7g 14%	
Cholesterol 25mg 5%	
Sodium 100mg 2%	
Total Sugar 25g 50%	
Total Protein 2g 4%	
Dietary Fiber 1g 2%	
Total Fiber 1g 2%	
Total Carbohydrate 32g 6%	

71891 37410

LaSalle Flavors



Ingredients: Milkfat and Nonfat Milk, Caramel Sauce (Sugar, Corn Syrup, Water, Mono- & Di-, Salt, Potassium Sorbate, Citric Acid, Maltodextrin, Sugar, Corn Syrup, Maltodextrin, Mono and Diglycerides, Guar Gum, Cellulose Gum, Carrageenan, Vanilla Extract, Natural Flavor, Caramel Color, Annatto Color)

Allergens: Milk
Produced on equipment that also processes Peanuts, Tree Nuts and Eggs.
Contains a Bioengineered Food ingredient.

Nutrition Facts	
4 servings per container	
Serving size 1/2 cup (125g)	
Calories 280 1120	
Total Fat 12g 24%	
Saturated Fat 7g 14%	
Cholesterol 25mg 5%	
Sodium 100mg 2%	
Total Sugar 25g 50%	
Total Protein 2g 4%	
Dietary Fiber 1g 2%	
Total Fiber 1g 2%	
Total Carbohydrate 32g 6%	

71891 37415

LaSalle Flavors



Ingredients: Milkfat and Nonfat Milk, Fudge Layer (Corn Syrup, High Fructose Corn Syrup, Butter, Milk, Chocolate), White Sugar, Cocoa (Processed with Alkali), Peanuts, Mono and Diglycerides, Salt, Ice, Vanilla, Vanilla Gum, Natural Flavor (20% Sugar, Corn Syrup, Mono and Diglycerides, Guar Gum, Cellulose Gum, Carrageenan, Vanilla Extract, Annatto Color)

Allergens: Milk, Soybean
Produced on equipment that also processes Peanuts, Tree Nuts and Eggs.
Contains a Bioengineered Food ingredient.

Nutrition Facts	
4 servings per container	
Serving size 1/2 cup (125g)	
Calories 280 1120	
Total Fat 12g 24%	
Saturated Fat 7g 14%	
Cholesterol 25mg 5%	
Sodium 100mg 2%	
Total Sugar 25g 50%	
Total Protein 2g 4%	
Dietary Fiber 1g 2%	
Total Fiber 1g 2%	
Total Carbohydrate 32g 6%	

71891 37420

LaSalle Flavors



Ingredients: Milkfat and Nonfat Milk, Strawberry Flavour, Water, Corn Starch, Citric Acid, Sugar, Corn Syrup, Mono and Diglycerides, Guar Gum, Cellulose Gum, Carrageenan, Red 40, Natural Flavor

Allergens: Milk
Produced on equipment that also processes Peanuts, Tree Nuts and Eggs.
Contains a Bioengineered Food ingredient.

Nutrition Facts	
4 servings per container	
Serving size 1/2 cup (125g)	
Calories 240 960	
Total Fat 10g 20%	
Saturated Fat 6g 12%	
Cholesterol 25mg 5%	
Sodium 100mg 2%	
Total Sugar 25g 50%	
Total Protein 2g 4%	
Dietary Fiber 1g 2%	
Total Fiber 1g 2%	
Total Carbohydrate 32g 6%	

71891 37418

LaSalle Flavors



Ingredients: Milkfat and Nonfat Milk, Sugar, Cocoa, Double Dutch Flour, Wheat, Hydrolyzed Soybean Monoglyceride (Phosphate Buffer Salts), Partially Hydrogenated Soybean Oil (Soybean Oil), Citric Acid, Natural Flavor, High Fructose Corn Syrup, Mono and Diglycerides, Guar Gum, Cellulose Gum, Carrageenan, Baking Soda, Artificially Flavored, Soy Lecithin, Mono and Diglycerides, Guar Gum, Cellulose Gum, Carrageenan, Vanilla Extract, Annatto Color

Allergens: Milk, Wheat, Soybean
Produced on equipment that also processes Peanuts, Tree Nuts and Eggs.
Contains a Bioengineered Food ingredient.

Nutrition Facts	
4 servings per container	
Serving size 1/2 cup (125g)	
Calories 290 1160	
Total Fat 12g 24%	
Saturated Fat 7g 14%	
Cholesterol 25mg 5%	
Sodium 100mg 2%	
Total Sugar 25g 50%	
Total Protein 2g 4%	
Dietary Fiber 1g 2%	
Total Fiber 1g 2%	
Total Carbohydrate 32g 6%	

71891 37413

LaSalle Flavors



Ingredients: Milkfat and Nonfat Milk, Sugar, Corn Syrup, Mono and Diglycerides, Guar Gum, Cellulose Gum, Carrageenan, Vanilla Extract, Annatto Color

Allergens: Milk
Produced on equipment that also processes Peanuts, Tree Nuts and Eggs.
Contains a Bioengineered Food ingredient.

Nutrition Facts	
4 servings per container	
Serving size 1/2 cup (125g)	
Calories 270 1080	
Total Fat 12g 24%	
Saturated Fat 7g 14%	
Cholesterol 25mg 5%	
Sodium 100mg 2%	
Total Sugar 25g 50%	
Total Protein 2g 4%	
Dietary Fiber 1g 2%	
Total Fiber 1g 2%	
Total Carbohydrate 32g 6%	

71891 37421

