

FOR IMMEDIATE RELEASE

Totally Cool, Inc.

[Regulatory@totallycoolicecream.com](mailto:Regulatory@totallycoolicecream.com)

410-363-7801

June 26, 2024

The products included in the recall is:

Brand	Product	Affected Lots
Friendly's	60 fl oz Celebration Ice Cream Cake  40 fl oz Strawberry Krunch Ice Cream Cake	All Dates Between: 05/20/2024 to 05/28/2025  <b>With Plant Code: 24-65, 24-0065, 2465, 240065</b>  <b>See Packaging, Example:</b> 05/20/25 15:30 24-65

Abilyn's Frozen Bakery	Abilyn's Frozen Bakery Vanilla & Chocolate 30 fl oz 6" Ice Cream Cake  Abilyn's Frozen Bakery Vanilla & Chocolate 60 fl oz 8" Ice Cream Cake  Abilyn's Frozen Bakery "For Love of Chocolate" Ice Cream Cake  Abilyn's Frozen Bakery "Cookies & Cream" Ice Cream Cake  Abilyn's Frozen Bakery "Cookie Dough" Ice Cream Cake	All Best By Dates Between: 05/20/2024 to 05/28/2025  <b>With Plant Code: 24-0065</b>  <b>See Packaging, Example:</b> 15:30 24-0065  <b>Best By: 05/20/25</b>
------------------------	--	--

Hershey's Ice cream	<p>38 fl oz vanilla and chocolate flavored ice cream cake</p> <p>110 fl oz vanilla and chocolate flavored ice cream cake</p> <p>4 fl oz Cookies &amp; Cream Ice Cream Cones</p> <p>4 fl oz Cookies &amp; Cream Polar Bear Ice Cream Sandwiches</p>	<p>All Codes Between:</p> <p>Cakes: 2305140 to 2405170</p> <p>Cones: 3174 to 4047</p> <p>Sandwiches: 2307187 to 2406163</p> <p><b>See Packaging for Cakes and Sandwiches, Example:</b> 2405140 11:42</p>
---------------------	--	--

Yelloh!	<p>4 fl oz Vanilla Nut Ice Cream Sundae Cones</p> <p>4 fl oz Vanilla Fudge Ice Cream Sundae Cones</p> <p>4 fl oz Pecan Praline Ice Cream Sundae Cones</p> <p>4 fl oz Chip &amp; Mint Ice Cream Sundae Cones</p> <p>4 fl oz Cookies &amp; Cream Ice Cream Sandwiches</p>	<p>All Codes Between:</p> <p>Cones: 6T3227 to 6T4157</p> <p>Sandwiches: 6T3115 to 6T4171</p> <p><b>See Packaging for Cones and Sandwiches, Example:</b> 6T4171 07:16</p>
---------	---	--

	4 fl oz Chocolate Chip Ice Cream Sandwiches	
--	---	--

Jeni`s	<p>3.5 fl oz Chocolate Silk Pie Ice Cream Sandwiches</p> <p>3.5 fl oz Key Lime Pie Frozen Dessert</p> <p>3.5 fl oz Mint Chocolate Truffle Pie Ice Cream Sandwiches</p> <p>3.5 fl oz Triple Berry Tart Pie Ice Cream Sandwiches</p>	<p>All Best by Dates: 07/24/25 to 05/23/2026</p> <p>All Codes Between: 23205 to 24144</p> <p><b>With Plant Code: 2465</b></p> <p><b>See Packaging, Example:</b> Best By: 05/23/2026 Lot 24144 07:03 2465</p>
--------	--	--

Cumberland Farms	<p>Cumberland Farms, Farmhouse Premium Ice Cream Sandwich, Rich Vanilla, 4 fl oz</p> <p>Cumberland Farms, Farmhouse Premium Ice Cream Sandwich, Marvelous Mint, 4 fl oz</p>	<p>All Best by Dates Between: 11/30/25 to 12/04/25</p> <p><b>With Plant Code: 2465</b></p> <p><b>See Packaging, Example:</b> Best By: 12/05/2025 07:17 2465</p>
------------------	---	---

The Frozen Farmer	<p>4 fl oz Elf On the Shelf Santa`s Cookies Ice Cream Sandwiches</p> <p>16 fl oz Elf On the Shelf Santa`s Cookies</p> <p>16 fl oz Strawberry Sorbet Pints</p> <p>16 fl oz Raspberry Sorbet Pints</p> <p>16 fl oz Orange Cream Frobert Pints</p> <p>16 fl oz Watermelon Sorbet Pints</p>	<p>All Best by Dates Between: Sandwiches: 09/04/25 to 12/07/25</p> <p>All Best by Dates Between: Pints: 09/05/25 to 07/30/26</p> <p><b>With Plant Code: 24-65</b></p> <p><b>See Packaging, Example:</b> Best By: 07/30/2026 24-65 14:05</p>
-------------------	---	---

<p>Marco</p>	<p>3.8 fl oz Dulce De Leche Ice Cream Sandwiches</p> <p>3.8 fl oz Vanilla Chai Ice Cream Sandwiches</p> <p>16 fl oz Dulce De Leche &amp; Cookies Ice Cream Pints</p> <p>16 fl oz Turkish Mocha Ice Cream Pints</p> <p>16 fl oz Vanilla Chai Ice Cream Pints</p> <p>16 fl oz Spicy Peanut Butter Caramel and Peanut Butter Caramel Ice Cream Pints</p> <p>16 fl oz Moroccan Honey Nut Ice Cream Pints</p> <p>16 fl oz Green Tea White Chocolate Ice Cream Pints</p> <p>16 fl oz Aztec Chocolate Ice Cream Pints</p>	<p>Sandwiches:</p> <p>All Best by Dates:</p> <p>11/28/25 to 11/29/25 with Codes Between: 2405149 to 2405150</p> <p>Pints:</p> <p>All Best by Dates:</p> <p>06/07/24 to 12/11/25 with Codes Between: 2312341 to 2406163</p> <p><b>With Plant Code: 2465</b></p> <p><b>See Packaging for Pints, Example:</b></p> <p>Best By: 12/11/2025</p> <p>14:11 24-65 2406163</p> <p><b>See Packaging for Sandwiches, Example:</b></p> <p>Best By: 12/11/2025</p> <p>Lot 2406163 07:09 2465</p>
--------------	--	--

<p>ChipWich</p>	<p>4 fl oz The Original Vanilla Chocolate Chip Ice Cream Sandwich 10 Club Pack, 3 Pack, 24 Pack</p> <p>4 fl oz The Original Double Chocolate Chip Ice Cream Sandwich 3 Pack</p> <p>16 fl oz Vanilla Chocolate Chip Ice Cream Pint</p> <p>16 fl oz Mint Chocolate Chip Ice Cream Pint</p>	<p>All Best by Dates Between: Sandwiches: Best by dates: 02/23/25 to 12/21/25</p> <ul style="list-style-type: none"> <li>• <b>Club pack (10 units):</b> Lot# 23298-24172 • <b>Single Serve:</b> Lot# 23298-24164 • <b>3 packs:</b> Lot# 23298-24136</li> <li>• <b>Double Chocolate 3 pack:</b> Lot# 24025,24026,24029, 24030,24086,24087,24088,24089</li> </ul> <p>Pints: 07/25/2024 to 01/27/2025</p> <p><b>With Plant Code: 24-65, 24-0065</b></p> <p><b>See Packaging for 10 Club Pack and Retail 3 Pack Sandwiches Example:</b> Best By: 12/21/2025 24-65 14:17 24173</p> <p><b>See Packaging for Single Serve Sandwiches Example:</b> BB: 12/14/25 24166 13:04 24-0065</p> <p><b>See Packaging for Pints Example:</b> Best By: 01/27/2025 14:21 24-65</p>
-----------------	--	--

AMAFruits	3 gal Acai Sorbet Tubs 3 gal Dragon Fruit Sorbet Tubs	All Best by dates and Codes: 3 / 2 8 / 2 4 , 3 / 2 9 / 2 4 3 / 3 0 / 2 4 , 0 5 / 0 1 / 2 5 , 0 5 / 0 2 / 2 5 , 0 5 / 0 3 / 2 5 , 0 5 / 0 4 / 2 5 , 6 / 2 4 / 2 5 , 6 / 2 8 / 2 5 , 6 / 2 9 / 2 5 , 6 / 3 0 / 2 5 , 6 / 0 1 / 2 5 , 7 / 2 8 / 2 5 , 8 / 2 8 / 2 5 , 8 / 3 1 / 2 5 , 0 9 / 0 5 / 2 5 , 231132 4
-----------	--	--

		2311325 2311326 2311331 2311332 2311333 2311334 2401031 2401032 2401033 2401036 2401037 2401038 2401039 2401040 2402043 2402044 2402057 2402058 402059 2403085 2403086 2403087 2403088 2404120 2404121 2405142 2406158 2406159  <b>See Packaging Example:</b> Best By: 07/28/25 2307209
--	--	---

Taharka	16 fl oz Honey Graham Ice Cream Pints  16 fl oz Key Lime Pie Ice Cream Pints	Best By date: 10/01/25 <b>With Plant Code: 24-65</b>  <b>See Packaging Example:</b> Best By: 10/01/2025 24-65 17:02
---------	--	--

Dolcezza Gelato	<p>16 fl oz Mascarpone &amp; Berries Ice Cream Pints</p> <p>16 fl oz Roasted Strawberry Ice Cream Pints</p> <p>16 fl oz Vanilla Bean Ice Cream Pints</p> <p>16 fl oz Peanut Butter Mash and Peanut Butter Cup Ice Cream Pints</p> <p>16 fl oz Dulce de Leche &amp; Cookies Ice Cream Pints</p> <p>16 fl oz Stracciatella Ice Cream Pints</p>	<p>All Best By Dates Between: 05/20/24 to 06/20/25</p> <p><b>With Plant Code: 24-65</b></p> <p><b>See Packaging Example:</b> Best By: 06/12/2025 14:34 24-65</p>
-----------------	--	--

	<p>16 fl oz Peanut Stracciatella Ice Cream Pints</p> <p>16 fl oz Swiss Chocolate Ice Cream Pints</p> <p>16 fl oz Coffee &amp; Cookies Ice Cream Pints</p> <p>16 fl oz Hot Cocoa Ice Cream Pints</p> <p>16 fl oz Sugar Cookie Dough Ice Cream Pints</p> <p>16 fl oz Dark Chocolate Ice Cream Pints</p> <p>16 fl oz Dark Chocolate Fudge Ice Cream Pints</p>	
LaSalle	16 fl oz Chocolate Ice Cream Pints	All Best By Dates Between: 11/18/24 to 10/25/25

	<p>16 fl oz Vanilla Ice Cream Pints</p> <p>16 fl oz Cherry Vanilla Ice Cream Pints</p> <p>16 fl oz Vanilla Mango Ice Cream Pints</p> <p>16 fl oz Vanilla Raspberry Ice Cream Pints</p> <p>16 fl oz Vanilla Fudge Ice Cream Pints</p> <p>16 fl oz Dulce De Leche Ice Cream Pints</p> <p>16 fl oz Cookies &amp; Cream Ice Cream Pints</p>	<p><b>With Plant Code: 24-65</b></p> <p><b>See Packaging Example:</b> Best By: 10/25/2025 24-65 17:05</p>
	<p>16 fl oz Butter Pecan Ice Cream Pints</p>	

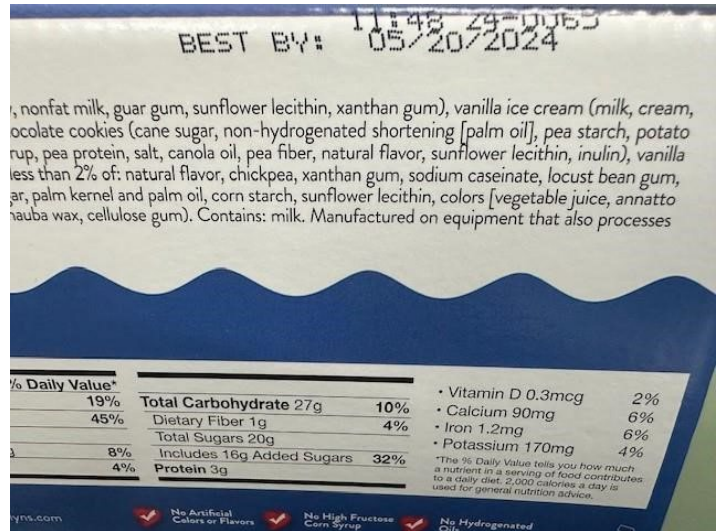




## Example Photographs

### Friendly's Products



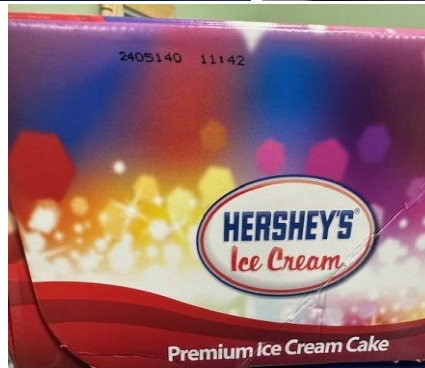
### Abilyn's Frozen Bakery Products



<p><b>REAL INGREDIENTS</b></p> <p><b>ABILYN'S Frozen Bakery</b></p> <p><b>Ice Cream Cake</b></p> <p><b>Cookies 'n Cream</b></p> <p><b>as always, Gluten FREE</b></p> <p>No Artificial Colors or Flavors    No High Fructose Corn Syrup    No Hydrogenated Oils</p> <p>Serves 8 - 10 (4 oz) (147 g) &amp; (104 g) Best if consumed 21-30 minutes before serving</p>	<p><b>REAL INGREDIENTS</b></p> <p><b>ABILYN'S Frozen Bakery</b></p> <p><b>Ice Cream Cake</b></p> <p><b>Chocolate Chip Cookie Dough</b></p> <p><b>as always, Gluten FREE</b></p> <p>No Artificial Colors or Flavors    No High Fructose Corn Syrup    No Hydrogenated Oils</p> <p>Serves 8 - 10 (4 oz) (147 g) &amp; (104 g) Best if consumed 21-30 minutes before serving</p>
<p><b>ABILYN'S Frozen Bakery</b></p> <p><b>Ice Cream Cake</b></p> <p><b>Cookies 'n Cream</b></p> <p><b>as always, Gluten FREE</b></p> <p>Look at all that <b>GOODNESS!</b></p> <p><b>REAL INGREDIENTS</b></p> 	<p><b>ABILYN'S Frozen Bakery</b></p> <p><b>Ice Cream Cake</b></p> <p><b>Chocolate Chip Cookie Dough</b></p> <p><b>as always, Gluten FREE</b></p> <p>Look at all that <b>GOODNESS!</b></p> <p><b>REAL INGREDIENTS</b></p> 

<p><b>REAL INGREDIENTS</b></p> <p><b>ABILYN'S Frozen Bakery</b></p> <p><b>Ice Cream Cake</b></p> <p><b>For the Love of Chocolate</b></p> <p><b>as always, Gluten FREE</b></p> <p>No Artificial Colors or Flavors    No High Fructose Corn Syrup    No Hydrogenated Oils</p> <p>Serves 8 - 10 (4 oz) (147 g) &amp; (104 g) Best if consumed 21-30 minutes before serving</p>	<p><b>REAL INGREDIENTS</b></p> <p><b>ABILYN'S Frozen Bakery</b></p> <p><b>Ice Cream Cake</b></p> <p><b>Vanilla &amp; Chocolate</b></p> <p><b>as always, Gluten FREE</b></p> <p>No Artificial Colors or Flavors    No High Fructose Corn Syrup    No Hydrogenated Oils</p> <p>Serves 8 - 10 (4 oz) (147 g) &amp; (104 g) Best if consumed 21-30 minutes before serving</p>
<p><b>ABILYN'S Frozen Bakery</b></p> <p><b>Ice Cream Cake</b></p> <p><b>For the Love of Chocolate</b></p> <p><b>as always, Gluten FREE</b></p> <p>Look at all that <b>GOODNESS!</b></p> <p><b>REAL INGREDIENTS</b></p> 	<p><b>ABILYN'S Frozen Bakery</b></p> <p><b>Ice Cream Cake</b></p> <p><b>Vanilla &amp; Chocolate</b></p> <p><b>as always, Gluten FREE</b></p> <p>Look at all that <b>GOODNESS!</b></p> <p><b>REAL INGREDIENTS</b></p> 

Hershey's Products

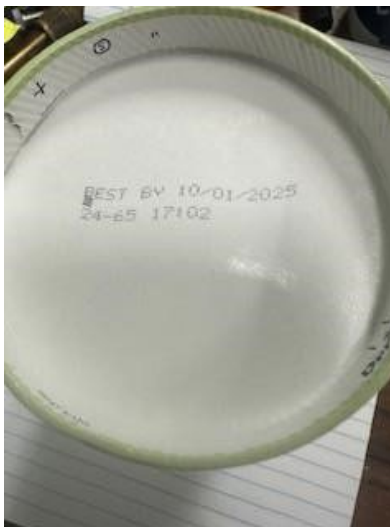


**Cumberland Products**





Taharka Products

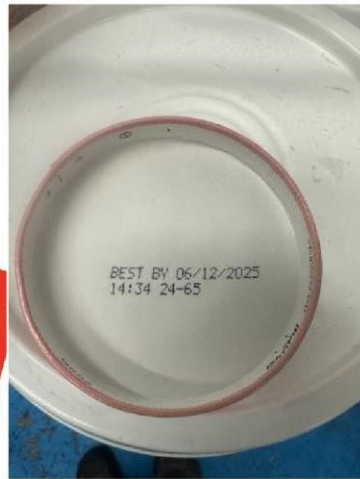
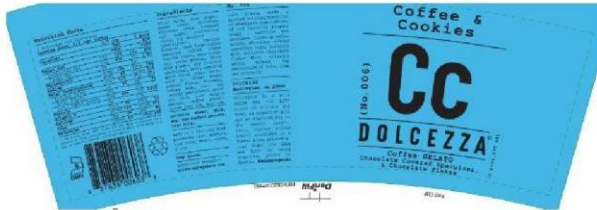
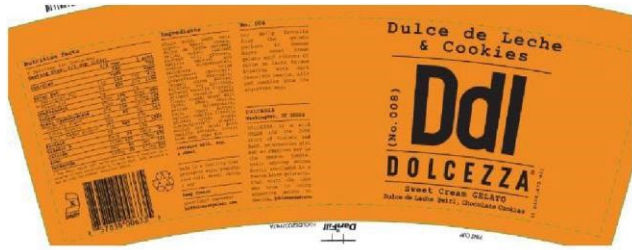


## AMAFruits Products



## Dolcezza Products

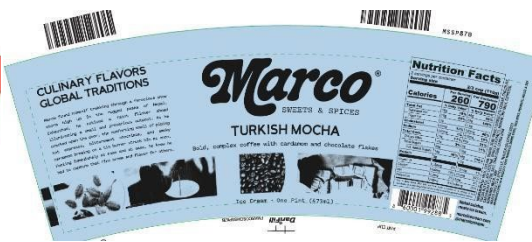




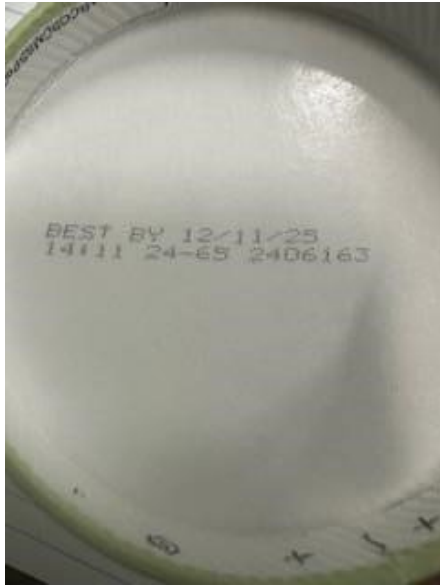
The Frozen Farmer Products



Marco Products











Yellowhi Products

Yelloh! Cookies & Cream  
Ice Cream Sandwiches

<b>Nutrition Facts</b>	
Serving Size 1 Sandwich (11g)	
Calories 230	
% Daily Value*	
Total Fat	10g
Sodium	100mg
Total Sugar	15g
Total Protein	2g
*Percent Daily Values are based on a diet of other people's secrets.	

**Yelloh! Quality**

Yelloh! Chocolate Chip  
Cookie Sandwich

<b>Nutrition Facts</b>	
Serving Size 1 Sandwich (11g)	
Calories 270	
% Daily Value*	
Total Fat	10g
Sodium	100mg
Total Sugar	15g
Total Protein	2g
*Percent Daily Values are based on a diet of other people's secrets.	

**Yelloh! Quality**

**Yelloh!** Cookies & Cream Ice Cream Sandwiches

NO ARTIFICIAL FLAVORS  
MADE WITH REAL CREAM

230 CALORIES

**Yelloh!** Cookies & Cream Ice Cream Sandwiches

Cookies and cream ice cream between two chocolate cookies

24 FL. OZ. (709mL)

CONTAINS 6 SANDWICHES • CHIPPED ICE

#370

cookies & Cream Ice Cream Sandwiches

**Yelloh!** Chocolate Chip Cookie Sandwich

NO ARTIFICIAL FLAVORS  
COLORS FROM NATURAL SOURCES  
MADE WITH REAL CREAM

270 CALORIES

**Yelloh!** Chocolate Chip Cookie Sandwich

Vanilla ice cream between two chocolate chip cookies

24 FL. OZ. (709mL)

CONTAINS 6 SANDWICHES • CHIPPED ICE

#371

Chocolate Chip Cookie Sandwich

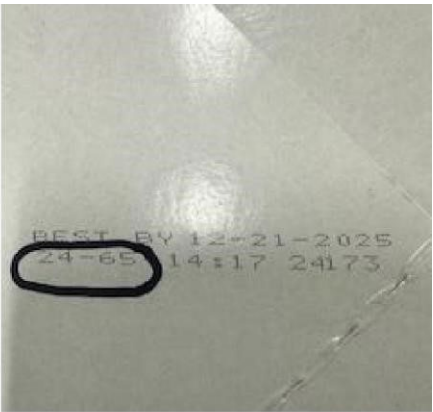


ChipWich Products





CH



# LaSalle Products

### LaSalle Flavors



**Ingredients:** Milkfat and Nonfat Milk, Sugar, Pecans (Roasted), Butter & Salt, Corn Syrup, Mono and Diglycerides, Guar Gum, Cellulose Gum, Carrageenan, Natural Flavor, Vanilla Extract, Annatto Color

**Allergens: Milk, Peans**  
Produced on equipment that also processes Peanuts, Tree Nuts and Eggs.  
Contains a Bioengineered Food ingredient.

Nutrition Facts	
4 servings per container	
Serving size 1/2 cup (125g)	
Calories 340 1360	
Total Fat 12g 24%	
Saturated Fat 7g 14%	
Cholesterol 25mg 5%	
Sodium 100mg 2%	
Total Sugar 25g 50%	
Total Fat 12g 24%	
Saturated Fat 7g 14%	
Cholesterol 25mg 5%	
Sodium 100mg 2%	
Total Sugar 25g 50%	
Total Fat 12g 24%	
Saturated Fat 7g 14%	
Cholesterol 25mg 5%	
Sodium 100mg 2%	
Total Sugar 25g 50%	

71891 37408

### LaSalle Flavors



**Ingredients:** Milkfat and Nonfat Milk, Sugar, Corn Syrup, Mango Purée, Mono and Diglycerides, Guar Gum, Modified Cellulose, Carrageenan, and 40 Natural Flavor, Vanilla Extract, Annatto Color, Citric Acid

**Allergens: Milk**  
Produced on equipment that also processes Peanuts, Tree Nuts and Eggs.  
Contains a Bioengineered Food ingredient.

Nutrition Facts	
4 servings per container	
Serving size 1/2 cup (125g)	
Calories 190 760	
Total Fat 12g 24%	
Saturated Fat 7g 14%	
Cholesterol 25mg 5%	
Sodium 100mg 2%	
Total Sugar 25g 50%	
Total Fat 12g 24%	
Saturated Fat 7g 14%	
Cholesterol 25mg 5%	
Sodium 100mg 2%	
Total Sugar 25g 50%	
Total Fat 12g 24%	
Saturated Fat 7g 14%	
Cholesterol 25mg 5%	
Sodium 100mg 2%	
Total Sugar 25g 50%	

71891 37416

### LaSalle Flavors



**Ingredients:** Milkfat and Nonfat Milk, Black Cherries, Cherritos, High Fructose Corn Syrup, Corn Syrup, Natural Flavor, Citric Acid, Red 40, Blue 1, Sugar, Cream Syrup, Mono and Diglycerides, Guar Gum, Cellulose Gum, Carrageenan, Natural Flavor (Annatto Color)

**Allergens: Milk, Wheat**  
Produced on equipment that also processes Peanuts, Tree Nuts and Eggs.  
Contains a Bioengineered Food ingredient.

Nutrition Facts	
4 servings per container	
Serving size 1/2 cup (125g)	
Calories 260 1040	
Total Fat 12g 24%	
Saturated Fat 7g 14%	
Cholesterol 25mg 5%	
Sodium 100mg 2%	
Total Sugar 25g 50%	
Total Fat 12g 24%	
Saturated Fat 7g 14%	
Cholesterol 25mg 5%	
Sodium 100mg 2%	
Total Sugar 25g 50%	
Total Fat 12g 24%	
Saturated Fat 7g 14%	
Cholesterol 25mg 5%	
Sodium 100mg 2%	
Total Sugar 25g 50%	

71891 37410

### LaSalle Flavors



**Ingredients:** Milkfat and Nonfat Milk, Caramel Sauce (Sugar, Corn Syrup, Water, Mono- & Di-, Butyl, Toluene, Sugar, Corn Syrup, Maltose, Mono and Diglycerides, Guar Gum, Cellulose Gum, Carrageenan, Vanilla Extract, Natural Flavor, Caramel Color, Annatto Color)

**Allergens: Milk**  
Produced on equipment that also processes Peanuts, Tree Nuts and Eggs.  
Contains a Bioengineered Food ingredient.

Nutrition Facts	
4 servings per container	
Serving size 1/2 cup (125g)	
Calories 280 1120	
Total Fat 12g 24%	
Saturated Fat 7g 14%	
Cholesterol 25mg 5%	
Sodium 100mg 2%	
Total Sugar 25g 50%	
Total Fat 12g 24%	
Saturated Fat 7g 14%	
Cholesterol 25mg 5%	
Sodium 100mg 2%	
Total Sugar 25g 50%	
Total Fat 12g 24%	
Saturated Fat 7g 14%	
Cholesterol 25mg 5%	
Sodium 100mg 2%	
Total Sugar 25g 50%	

71891 37415

### LaSalle Flavors



**Ingredients:** Milkfat and Nonfat Milk, Fudge Layer (Corn Syrup, High Fructose Corn Syrup, Butteroil, Sugar, Milk, Chocolate, White, Baking Cocoa (Processed with Alkali), Peanuts, Mono and Diglycerides, Salt, Ice, Vanilla, Vanilla Gum, Natural Flavor (Red 40), Sugar, Corn Syrup, Mono and Diglycerides, Guar Gum, Cellulose Gum, Carrageenan, Vanilla Extract, Annatto Color)

**Allergens: Milk, Soybean**  
Produced on equipment that also processes Peanuts, Tree Nuts and Eggs.  
Contains a Bioengineered Food ingredient.

Nutrition Facts	
4 servings per container	
Serving size 1/2 cup (125g)	
Calories 280 1120	
Total Fat 12g 24%	
Saturated Fat 7g 14%	
Cholesterol 25mg 5%	
Sodium 100mg 2%	
Total Sugar 25g 50%	
Total Fat 12g 24%	
Saturated Fat 7g 14%	
Cholesterol 25mg 5%	
Sodium 100mg 2%	
Total Sugar 25g 50%	
Total Fat 12g 24%	
Saturated Fat 7g 14%	
Cholesterol 25mg 5%	
Sodium 100mg 2%	
Total Sugar 25g 50%	

71891 37420

### LaSalle Flavors



**Ingredients:** Milkfat and Nonfat Milk, Strawberry Flavour, Water, Corn Starch, Citric Acid, Sugar, Corn Syrup, Mono and Diglycerides, Guar Gum, Cellulose Gum, Carrageenan, Red 40, Natural Flavor

**Allergens: Milk**  
Produced on equipment that also processes Peanuts, Tree Nuts and Eggs.  
Contains a Bioengineered Food ingredient.

Nutrition Facts	
4 servings per container	
Serving size 1/2 cup (125g)	
Calories 240 960	
Total Fat 12g 24%	
Saturated Fat 7g 14%	
Cholesterol 25mg 5%	
Sodium 100mg 2%	
Total Sugar 25g 50%	
Total Fat 12g 24%	
Saturated Fat 7g 14%	
Cholesterol 25mg 5%	
Sodium 100mg 2%	
Total Sugar 25g 50%	
Total Fat 12g 24%	
Saturated Fat 7g 14%	
Cholesterol 25mg 5%	
Sodium 100mg 2%	
Total Sugar 25g 50%	

71891 37418

### LaSalle Flavors



**Ingredients:** Milkfat and Nonfat Milk, Sugar, Cocoa, Double Dutch Flour, Wheat, Hydrolyzed Soybean Monoglyceride (Phosphate Buffer Salts), Partially Hydrogenated Soybean Oil (Soybean Oil), Citric Acid, Natural Flavor (Red 40), Sugar, Corn Syrup, Mono and Diglycerides, Guar Gum, Cellulose Gum, Carrageenan, Baking Soda, Artificially Flavored, Soy Lecithin, Mono and Diglycerides, Guar Gum, Cellulose Gum, Carrageenan, Vanilla Extract, Annatto Color

**Allergens: Milk, Wheat, Soybean**  
Produced on equipment that also processes Peanuts, Tree Nuts and Eggs.  
Contains a Bioengineered Food ingredient.

Nutrition Facts	
4 servings per container	
Serving size 1/2 cup (125g)	
Calories 290 1160	
Total Fat 12g 24%	
Saturated Fat 7g 14%	
Cholesterol 25mg 5%	
Sodium 100mg 2%	
Total Sugar 25g 50%	
Total Fat 12g 24%	
Saturated Fat 7g 14%	
Cholesterol 25mg 5%	
Sodium 100mg 2%	
Total Sugar 25g 50%	
Total Fat 12g 24%	
Saturated Fat 7g 14%	
Cholesterol 25mg 5%	
Sodium 100mg 2%	
Total Sugar 25g 50%	

71891 37413

### LaSalle Flavors



**Ingredients:** Milkfat and Nonfat Milk, Sugar, Corn Syrup, Mono and Diglycerides, Guar Gum, Cellulose Gum, Carrageenan, Vanilla Extract, Annatto Color

**Allergens: Milk**  
Produced on equipment that also processes Peanuts, Tree Nuts and Eggs.  
Contains a Bioengineered Food ingredient.

Nutrition Facts	
4 servings per container	
Serving size 1/2 cup (125g)	
Calories 270 1080	
Total Fat 12g 24%	
Saturated Fat 7g 14%	
Cholesterol 25mg 5%	
Sodium 100mg 2%	
Total Sugar 25g 50%	
Total Fat 12g 24%	
Saturated Fat 7g 14%	
Cholesterol 25mg 5%	
Sodium 100mg 2%	
Total Sugar 25g 50%	
Total Fat 12g 24%	
Saturated Fat 7g 14%	
Cholesterol 25mg 5%	
Sodium 100mg 2%	
Total Sugar 25g 50%	

71891 37421

**LaSalle Flavors**



**Ingredients:** WHOLE MILK CHOCOLATE, Sugar, Cream, Cocoa Processed with Alkali, Mono and Diglycerides, Emulsifier, Cellulose Gum, Caramelized Milk, Caramelized.

**Allergens:** Milk  
 Produced in a facility that also processes: Peanuts, Tree Nuts and Eggs.  
 Contains 2-3 ingredients from soybeans.



**Nutrition Facts**  
 1/2 cup (125g) per container      2 cups (500g)

Serving Size		Per serving		Per container	
<b>Calories</b>	<b>270</b>	<b>1080</b>			
<b>% Daily Value*</b>					
Total Fat	12g	24%	24%	24%	24%
Total Crap	12g	24%	24%	24%	24%
Total Sugar	12g	24%	24%	24%	24%
Total Protein	12g	24%	24%	24%	24%
Total Fat	12g	24%	24%	24%	24%
Total Crap	12g	24%	24%	24%	24%
Total Sugar	12g	24%	24%	24%	24%
Total Protein	12g	24%	24%	24%	24%
Total Fat	12g	24%	24%	24%	24%
Total Crap	12g	24%	24%	24%	24%
Total Sugar	12g	24%	24%	24%	24%
Total Protein	12g	24%	24%	24%	24%

