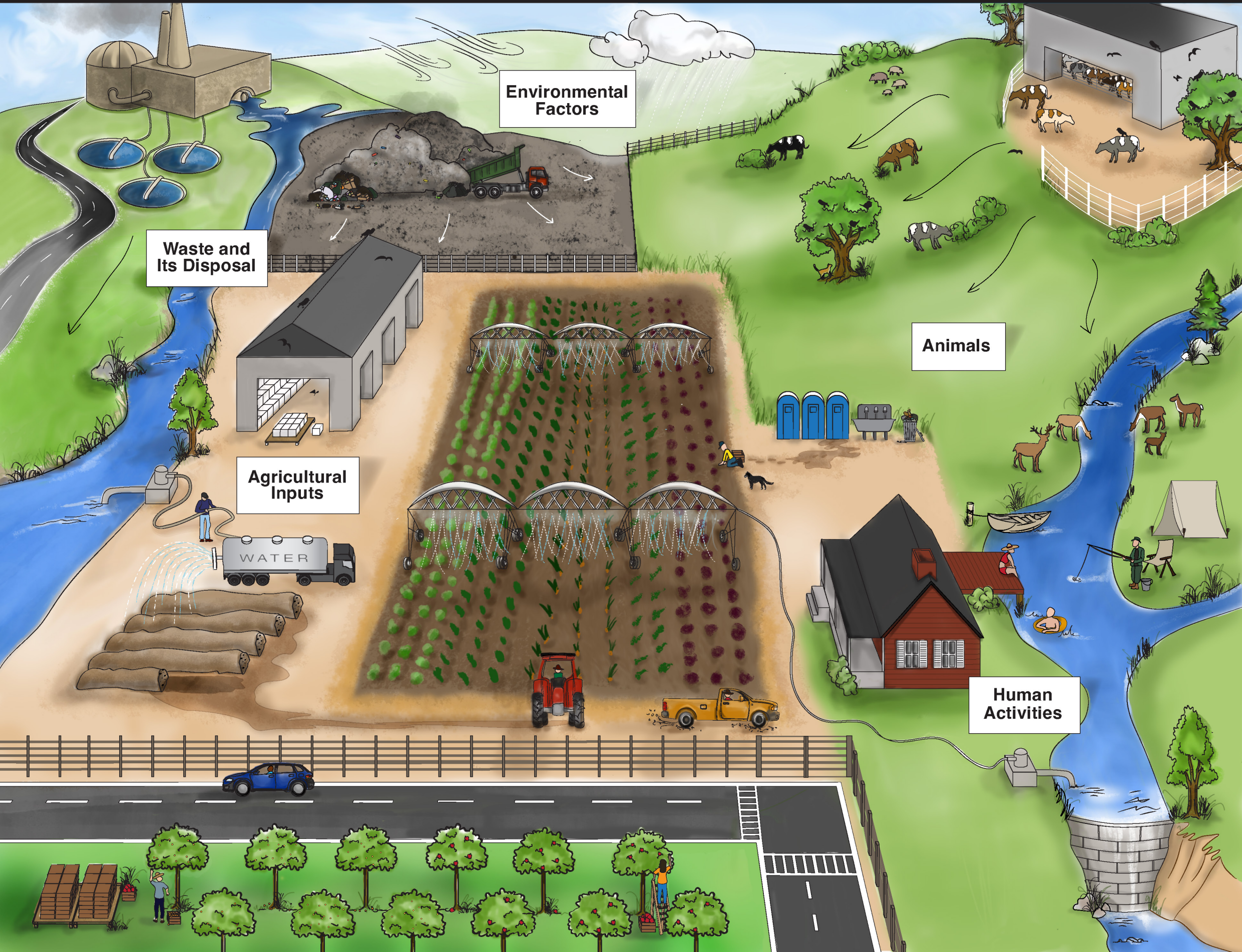


WHAT CONTAMINATION SOURCES CAN IMPACT A PRODUCE FARM?



Potential sources or routes of contamination on farms and adjacent and nearby land can include:

Environmental Factors

- Land features, such as topography
- Land uses
- Weather events

Waste and Its Disposal

- Toilet facilities and septic systems
- Presence of waste or trash
- Wastewater drainage
- Improperly treated human waste

Animals

- Wild and domestic animals
- Animal housing
- Animal habitats and attractants

Agricultural Inputs

- Storage and application of soil amendments and manure
- Agricultural water sources or practices
- Equipment and vehicle management and traffic patterns
- Water runoff and pooling

Human Activities

- Worker movement patterns
- Presence of recreational areas and activities
- Proximity to urban areas, housing or recreational areas
- Adjacent agricultural practices
- Worker and farming practices

WHAT CONTAMINATION SOURCES CAN IMPACT A PRODUCE FARM?

Potential sources or routes of contamination on farms and adjacent and nearby land can include:

Environmental Factors

- Land features, such as topography
- Land uses
- Weather events

Waste and Its Disposal

- Toilet facilities and septic systems
- Presence of waste or trash
- Wastewater drainage
- Improperly treated human waste

Animals

- Wild and domestic animals
- Animal housing
- Animal habitats and attractants

Agricultural Inputs

- Storage and application of soil amendments and manure
- Agricultural water sources or practices
- Equipment and vehicle management and traffic patterns
- Water runoff and pooling

Human Activities

- Worker movement patterns
- Presence of recreational areas and activities
- Proximity to urban areas, housing, or recreational areas
- Adjacent agricultural practices
- Worker and farming practices