

FDA Staff Manual Guides, Volume I – Organizations and Functions

Department of Health and Human Services

Food and Drug Administration

Human Foods Program

Nutrition Center of Excellence

Effective Date: May 13, 2024

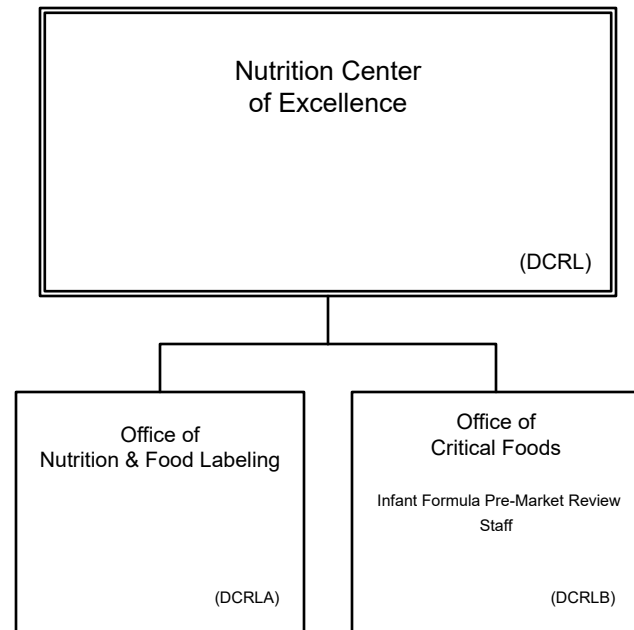
1. Nutrition Center of Excellence (DCRL).

- A. Provides expert advice to senior human foods leadership and other Food and Drug Administration (FDA) officials and directs major FDA initiatives, policies, and strategies related to nutrition and food labeling, and critical foods.
- B. Provides analysis, planning and direction on nutrition and food labeling initiatives and critical food for the Human Foods Program (HFP) and the Nutrition Center of Excellence (NCE).
- C. Develops policy, regulations, guidance, and similar documents for matters within the scope of the responsibility of the NCE.
- D. Collaborates on scientific research with federal and other data partners and supports the development and maintenance of data systems to assist and inform direction, planning and management of activities and initiatives relevant to the NCE and the HFP.

2. Authority and Effective Date.

The functional statements for the Nutrition Center of Excellence were approved by the Secretary of Health and Human Services on March 5, 2024, and effective on May 13, 2024.

**Department of Health and Human Services
Food and Drug Administration
Human Foods Program
Nutrition Center of Excellence**



Division of Food Labeling & Standards
Division of Nutrition Labeling, Science & Claims

Staff Manual Guide 1232A.3
Organizations and Functions
Effective Date: May 13, 2024

The following is the Department of Health and Human Services, Food and Drug Administration, Human Foods Program, Nutrition Center Excellence organization structure depicting all the organizational structures reporting to the Director:

Office of Nutrition and Food Labeling (DCRLA)

Office of Critical Foods (DCRLB)

These organizations report to the Office of Nutrition and Food Labeling (DCRLA):

Division of Food Labeling and Standards (DCRLAA)

Division of Nutrition Labeling, Science and Claims (DCRLAB)

These organizations report to the Office of Critical Foods (DCRLB):

Infant Formula Pre-Market Review Staff (DCRLB1)