

FDA Staff Manual Guides, Volume I – Organizations and Functions

Department of Health and Human Services

Food and Drug Administration

Human Foods Program

Office of Laboratory Operations and Applied Science

Office of Regulatory Testing and Surveillance

Effective Date: May 13, 2024

1. Office of Regulatory Testing and Surveillance (DCRMA).

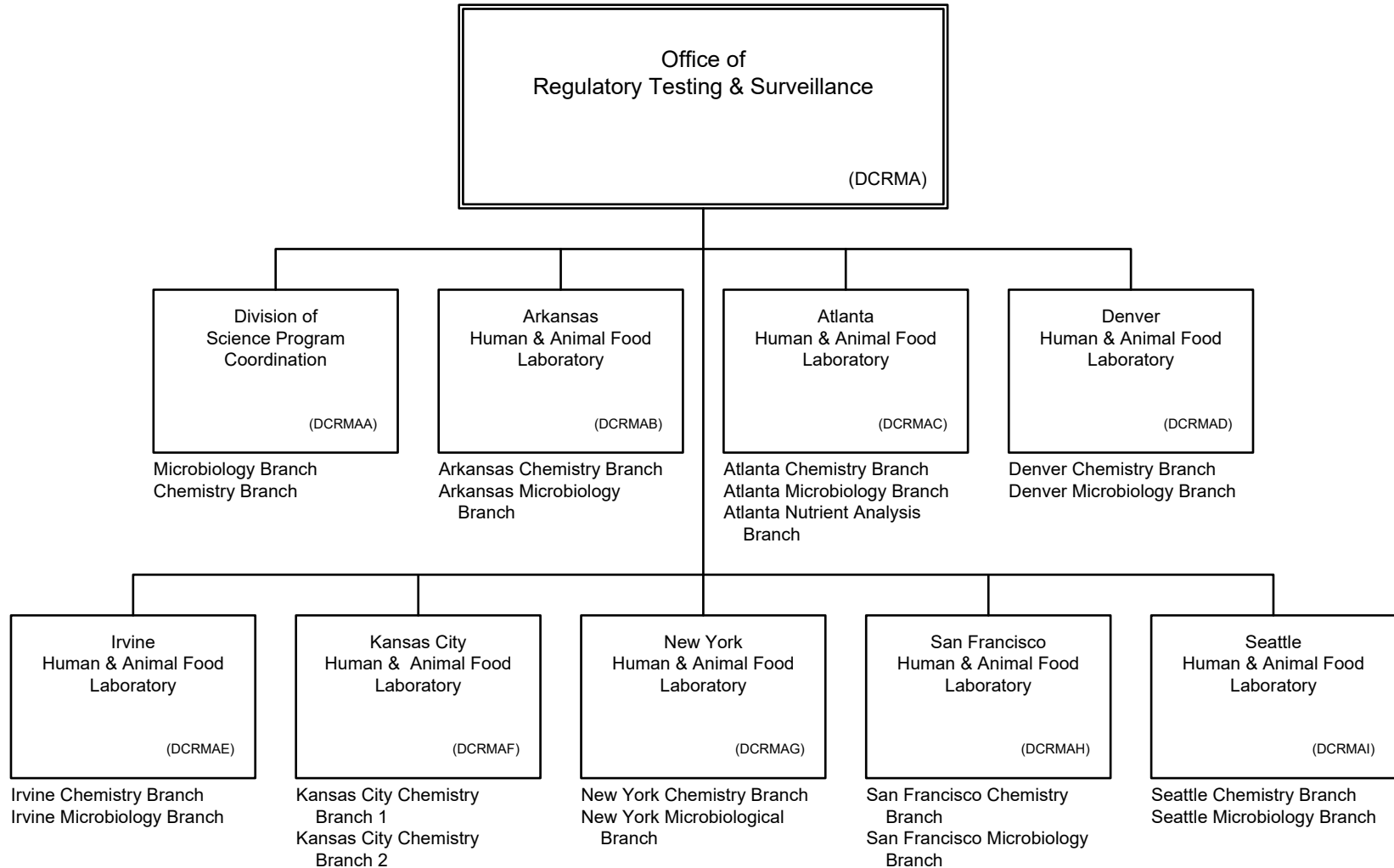
- A. Manages the science-based testing of human and animal food. Advises on scientific issues related to human and animal food laboratory operations.
- B. Provides strategic leadership and support for high quality, collaborative, scientific activities that advance regulatory science and address important public health issues concerning the Food and Drug Administration (FDA) regulated products, including their evaluation, quality, safety and effectiveness.
- C. Fosters development and use of innovative technologies to meet Human Foods Program (HFP) public health needs.
- D. Collaborates for the advancement of regulatory methods and applied technologies for human and animal food safety.
- E. Advises on the management of the office's resources (including national experts) to assure their coordinated, efficient, and effective use.
- F. Ensures appropriate samples are being collected to support the needs and mission of the HFP and Center for Veterinary Medicine (CVM), through collaborations with FDA's regulatory programs, and supplementing with sample collection specialists.
- G. Collaborates with other international, federal, state, and local partners in the development of policies and procedures to assure capacity and capability for analytical testing of foods in emergency situations.

- H. Works with appropriate Centers and other stakeholders to establish and execute strategic and tactical plans for the effective use of HFP science resources relative to human and animal food.
- I. Serves as subject matter experts for the development and delivery of foods program related laboratory training including efficiencies of resources and timelines.
- J. Ensures compliance with laboratory accreditation standards and quality programs.

2. Authority and Effective Date.

The functional statements for the Office of Regulatory Testing and Surveillance were approved by the Secretary of Health and Human Services on March 5, 2024, and effective on May 13, 2024.

Department of Health and Human Services
Food and Drug Administration
Human Foods Program
Office of Laboratory Operations and Applied Science
Office of Regulatory Testing and Surveillance



Staff Manual Guide 1232A.41
Organizations and Functions
Effective Date: May 13, 2024

The following is the Department of Health and Human Services, Food and Drug Administration, Human Foods Program, Office of Laboratory Operations and Applied Science, Office of Regulatory Testing and Surveillance organization structure depicting all the organizational structures reporting to the Director:

Division of Science Program Coordination (DCRMAA)

Arkansas Human and Animal Food Laboratory (DCRMAB)

Atlanta Human and Animal Food Laboratory (DCRMAC)

Denver Human and Animal Food Laboratory (DCRMAD)

Irvine Human and Animal Food Laboratory (DCRMAE)

Kansas City Human and Animal Food Laboratory (DCRMAF)

New York Human and Animal Food Laboratory (DCRMAG)

San Francisco Human and Animal Food Laboratory (DCRMAH)

Seattle Human and Animal Food Laboratory (DCRMAI)

These organizations report to the Division of Science Program Coordination (DCRMAA):

Microbiology Branch (DCRMAA1)

Chemistry Branch (DCRMAA2)

These organizations report to the Arkansas Human and Animal Food Laboratory (DCRMAB):

Arkansas Chemistry Branch (DCRMAB1)

Arkansas Microbiology Branch (DCRMAB2)

These organizations report to the Atlanta Human and Animal Food Laboratory (DCRMAC):

Atlanta Chemistry Branch (DCRMAC1)

Atlanta Microbiology Branch (DCRMAC2)

Atlanta Nutrient Analysis Branch (DCRMAC3)

These organizations report to the Denver Human and Animal Food Laboratory (DCRMAD):

Denver Chemistry Branch (DCRMAD1)

Denver Microbiology Branch (DCRMAD2)

These organizations report to the Irvine Human and Animal Food Laboratory (DCRMAE):

Irvine Chemistry Branch (DCRMAE1)

Irvine Microbiology Branch (DCRMAE2)

These organizations report to the Kansas City Human and Animal Food Laboratory (DCRMAF):

Kansas City Chemistry Branch 1 (DCRMAF1)

Kansas City Chemistry Branch 2 (DCRMAF2)

These organizations report to the New York Human and Animal Food Laboratory (DCRMAG):

New York Chemistry Branch (DCRMAG1)

New York Microbiological Branch (DCRMAG2)

These organizations report to the San Francisco Human and Animal Food Laboratory (DCRMAH):

San Francisco Chemistry Branch (DCRMAH1)

San Francisco Microbiology Branch (DCRMAH2)

These organizations report to the Seattle Human and Animal Food Laboratory (DCRMAI):

Seattle Chemistry Branch (DCRMAI1)

Seattle Microbiology Branch (DCRMAI2)