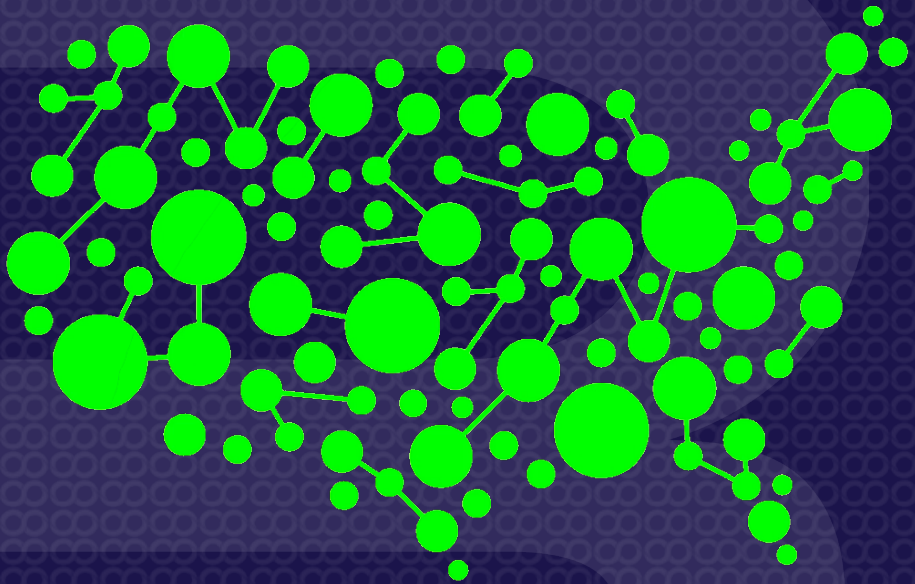


American College of Radiology

Assess-AI



U.S. Food and Drug Administration
Center for Devices and Radiological Health
Digital Health Advisory Committee Meeting

Total Product Lifecycle Considerations for Generative AI-Enabled Devices

BERNARDO BIZZO, MD, PHD

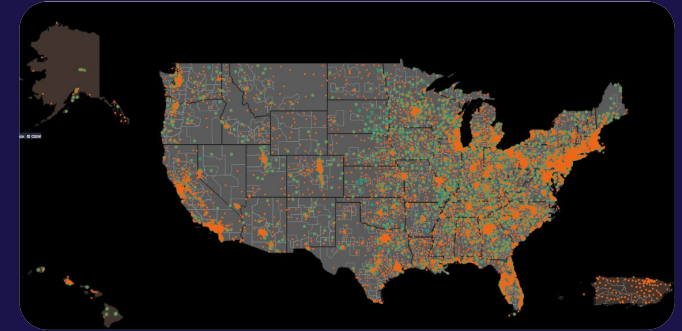
*ASSOCIATE CHIEF SCIENCE OFFICER, AMERICAN COLLEGE OF RADIOLOGY - DATA SCIENCE INSTITUTE
SENIOR DIRECTOR, MASS GENERAL BRIGHAM AI - HARVARD MEDICAL SCHOOL*

Focused. Forward. Together.™

ACR Recognized Center for Healthcare-AI

ARCH-AI

- The ACR exchanges images and data with over **40,000 Imaging entities through ACR Connect** for Accreditation, Registries, Research, Education, and AI Programs
- The first **National AI quality assurance program** for radiology facilities:
 - 18 Recognized Centers
 - 48 in the pipeline
 - 2 in submission process
 - 16 International



ACR facilities network



ACR Recognized Center for Healthcare-AI Assess-AI

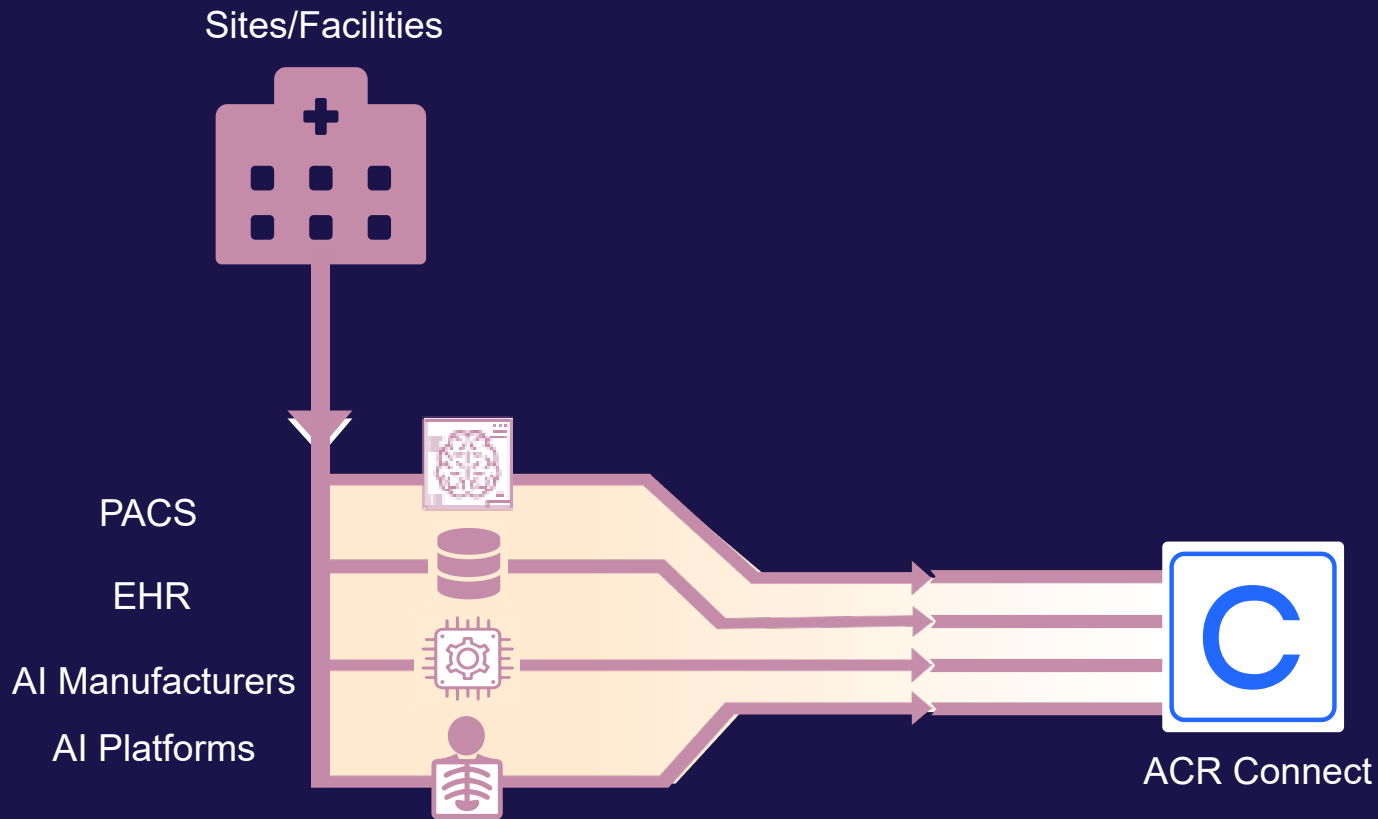


- **Assess-AI** is a registry that provides **real-world monitoring of imaging-based AI** models deployed in a clinical workflow.
- It allows the comparison of local performance metrics to **national benchmarks** and **facilities with similar characteristics** (region, facility type, trauma level, urban/rural).
- Piloting with **15 sites, 4 AI vendors/platforms engaged for 2 CNN clinical use cases** (intracranial hemorrhage and pulmonary embolism)



Current state

In use for AI monitoring

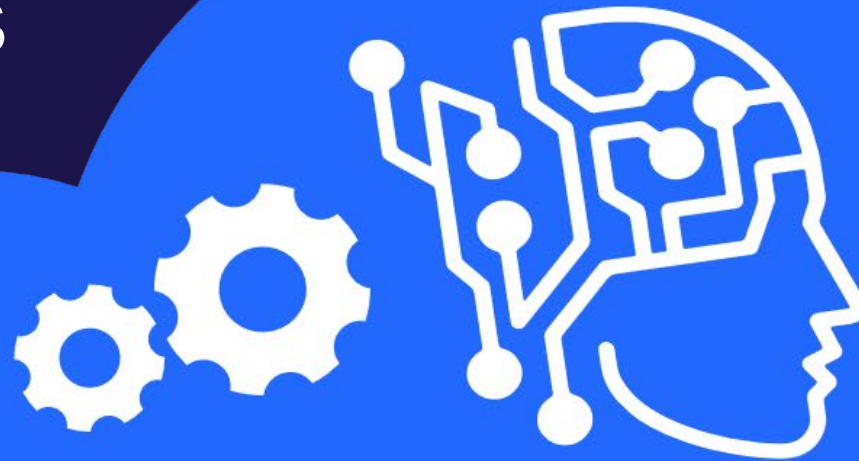




Current state

Narrow AI use cases

ICH, PE, others



SITE INFORMATION

Final Radiology Report

AI Model (CNN) Information

- Developer
- Version
- Output (positive/negative)

Case Information

- Facility
- Patient age, sex, ethnicity
- DICOM header metadata

ACR DATA SCIENCE INSTITUTE

Large Language Model Prompts

- SME prompting to extract report information
 - Positive or negative for use cases
 - Adequate or suboptimal quality
 - High or low certainty

Analytics and Reporting

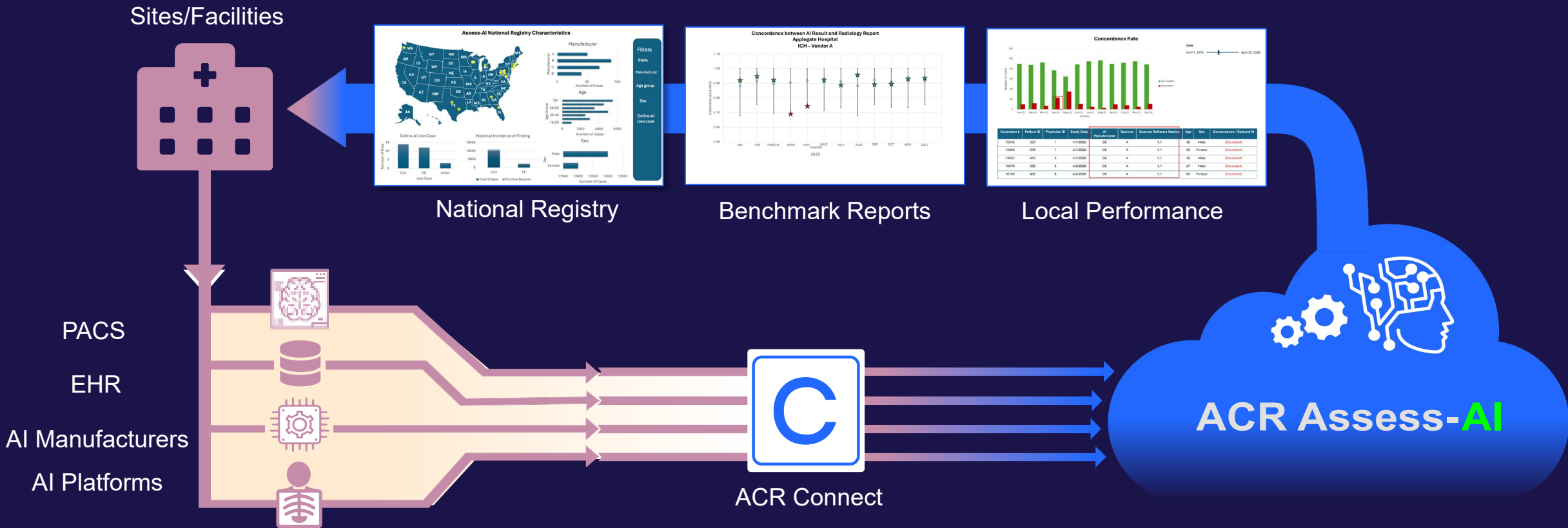
- Compare report information to model output
- Dashboards with subgroup analyses, e.g.,
 - Demographics
 - Technical parameters
 - National incidence of finding





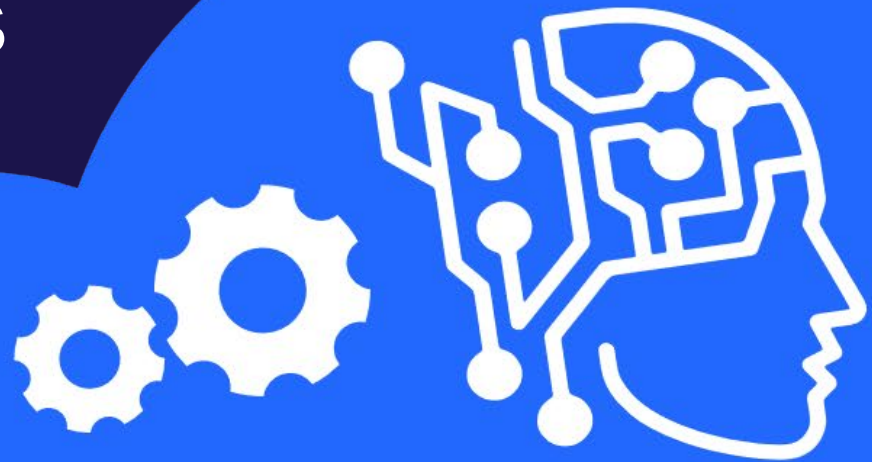
Current state

In use for AI monitoring





Future state
Narrow use cases
Draft Reports



SITE INFORMATION

Final Radiology Report

AI Model (VLM) Information

- Developer
- Version
- Output (**draft report**)

Case Information

- Facility
- Patient age, sex, ethnicity
- DICOM header metadata

ACR DATA SCIENCE INSTITUTE

Large Language Model Prompts

- SME prompting to extract report information
 - Identify and count clinically relevant findings in **draft report** and **final report**

The Healthcare AI Arena
A Collaborative Community for Healthcare AI Validation and Monitoring

Analytics and Reporting

- **Differences between draft and final report**
- Dashboards with subgroup analyses, e.g.,
 - Demographics
 - Technical parameters
 - National incidence of finding

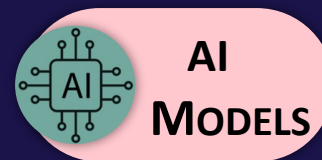
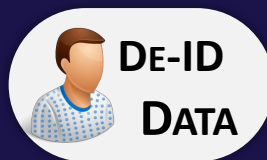




The Healthcare AI Arena

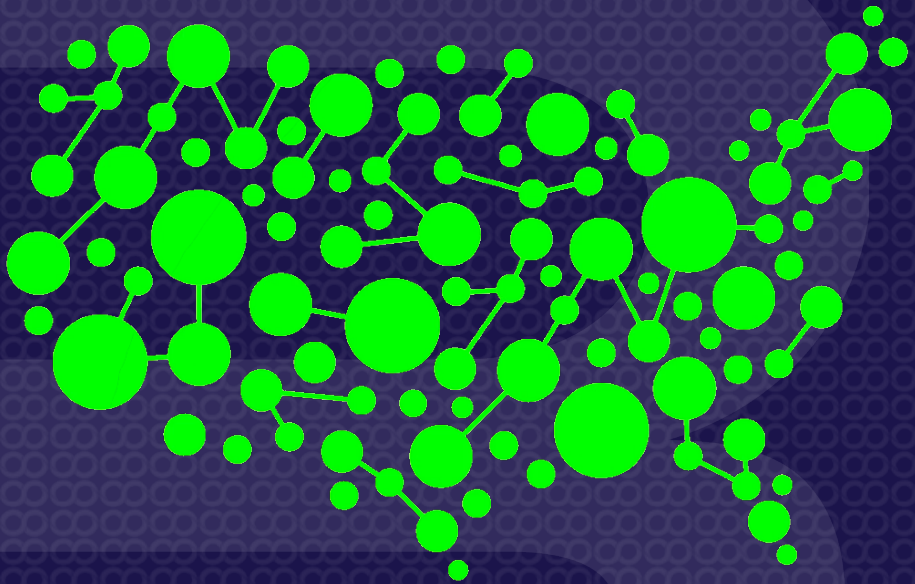
A Collaborative Community for Healthcare AI Validation and Monitoring

American College of Radiology
Emory Healthcare
Mass General Brigham
The University of Washington
The University of Wisconsin



American College of Radiology

Assess-AI



U.S. Food and Drug Administration
Center for Devices and Radiological Health
Digital Health Advisory Committee Meeting

Total Product Lifecycle Considerations for Generative AI-Enabled Devices

BERNARDO BIZZO, MD, PHD

*ASSOCIATE CHIEF SCIENCE OFFICER, AMERICAN COLLEGE OF RADIOLOGY - DATA SCIENCE INSTITUTE
SENIOR DIRECTOR, MASS GENERAL BRIGHAM AI - HARVARD MEDICAL SCHOOL*

Focused. Forward. Together.™