

**FDA Staff Manual Guides, Volume I – Organizations and Functions**

**Department of Health and Human Services**

**Food and Drug Administration**

**Center for Veterinary Medicine**

**Office of Applied Science**

**Division of One Health Monitoring**

Effective: September 30, 2022

**1. Division of One Health Monitoring (DCGEC).**

- A. Conducts scientific monitoring and investigation across the One Health continuum, including food and companion animals as well as their intersection with human the environment.
- B. Utilizes scientific monitoring and investigation in support of the CVM's mission for food and feed safety, the President's Food Safety Initiative, and the national initiative to Combat Antibiotic Resistant Bacteria (CARB).
- C. Maintains monitoring program for antibiotic sensitivity testing and molecular/genetic typing of bacteria for research purposes and for field isolate testing.
- D. Maintains a network of laboratories in North America to provide FDA with critical laboratory testing data from veterinary and retail samples across the United States.
- E. Develops capacity and infrastructure of the network of laboratories in North America to enable these laboratories to serve as first responders in case investigations and emergency response activities.
- F. Maintains partnership with Federal Agencies to share One Health mission across relevant jurisdictions, including the Centers for Disease Control and the United States Department of Agriculture.

**2. National Antimicrobial Resistance Monitoring System Branch (DCGECA).**

- A. Maintains a partnership amongst FDA, the Centers for Disease Control and Prevention, and the United States Department of Agriculture, the purpose of which is to monitor the existence of antimicrobial resistance in human foods derived from animals.

- B. Maintains a network of laboratories among state and local departments of health, the purpose of which is to monitor the existence of antimicrobial resistance in human foods derived from animals.
- C. Makes available for the protection of the nation's health a library of genetic information key to understanding the status and development of antimicrobial resistance in human foods derived from animals.

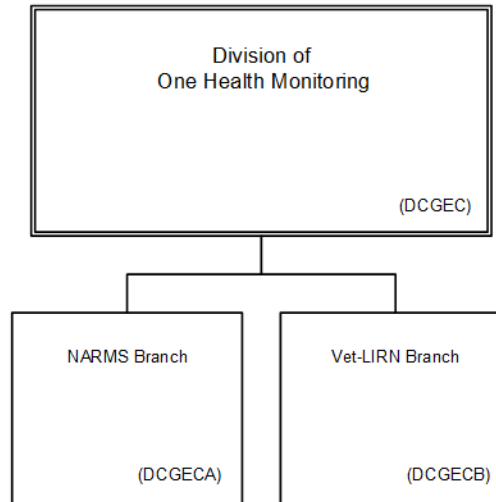
**3. Veterinary Laboratory Investigation and Response Network Branch (DCGECEB).**

- A. Builds laboratory capacity for routine and emergency response amongst a network of university and agricultural laboratories across the United States.
- B. Leverages the network of laboratories to respond to animal food, animal drug, and other issues concerning human and animal health through a coordinated network of veterinary diagnostic laboratories.

**4. Authority and Effective Date**

The functional statements for the Division of One Health Monitoring were approved by the Commissioner of Food and Drugs on August 11, 2022 and effective on September 30, 2022.

**Department of Health and Human Services  
Food and Drug Administration  
Center for Veterinary Medicine  
Office of Applied Science  
Division of One Health Monitoring**



Staff Manual Guide 1245.12  
Organizations and Functions  
Effective Date: September 30, 2022

The following is the Department of Health and Human Services, Food and Drug Administration, Center for Veterinary Medicine, Office of Applied Science, Division of One Health Monitoring organization structure depicting all the organizational structures reporting to the Division of One Health Monitoring:

Division of One Health Monitoring (DCGEC)

National Antimicrobial Resistance Monitoring System Branch (DCGECA)

Veterinary Laboratory Investigation and Response Network Branch (DCGECB)