

Zika MAC-ELISA

Centers for Disease Control and Prevention

**For Use Under an Emergency Use
Authorization Only**

Instructions for Use

Table of Contents

<i>Introduction</i>	3
<i>Specimens</i>	5
<i>Equipment and Consumables</i>	5
<i>Formulations</i>	8
<i>Quality Control</i>	8
<i>Zika MAC-ELISA Procedure</i>	9
<i>Interpreting Test Results</i>	14
<i>Assay Limitations</i>	17
<i>Performance Characteristics</i>	19
<i>Contact</i>	29
<i>References</i>	29
<i>Appendix A: Dynex Agility Instructions</i>	31
<i>Appendix B: Dynex DSX Instructions</i>	67

Introduction

PURPOSE

This document describes the use of an IgM antibody capture enzyme-linked immunosorbent assay (MAC-ELISA) for the presumptive detection of antibodies to Zika virus in specimens collected from persons who have been potentially exposed to Zika virus.

This test is only intended for use as described under the Food and Drug Administration's (FDA) Emergency Use Authorization (EUA).

INTENDED USE

The CDC Zika MAC-ELISA is intended for the qualitative detection of Zika virus IgM antibodies in human sera or cerebrospinal fluid (CSF) that is submitted alongside a patient-matched serum specimen, collected from individuals meeting CDC Zika virus clinical criteria (e.g., clinical signs and symptoms associated with Zika virus infection) and/or CDC Zika virus epidemiological criteria (e.g., history of residence in or travel to a geographic region with active Zika virus transmission at the time of travel, or other epidemiologic criteria for which Zika virus testing may be indicated). The assay is intended for use in qualified laboratories designated by the CDC, as a part of a multi-test algorithm.

Assay results are for the presumptive identification of IgM antibodies to Zika virus. Positive and equivocal results are not definitive for diagnosis of Zika virus infection. False positive results are possible in patients with a history of infection with other flaviviruses. Confirmation of the presence of anti-Zika IgM antibodies in equivocal or presumptive positive specimens may require additional testing using the CDC-issued algorithm. Positive or equivocal results must be considered in conjunction with additional testing using the CDC-issued algorithm and/or considered alongside test results for other patient-matched specimens using the CDC-issued algorithm. Laboratories are required to report positive results to the appropriate public health authorities. Within the United States and its territories, equivocal and presumptive positive results must be reported to CDC by qualified laboratories designated by CDC.

Results of this test cannot be used as the sole basis of patient management decisions and must be combined with clinical observations, patient history, epidemiological information, and other laboratory evidences. Zika IgM antibodies typically develop during the first week of illness; however, limited published data exist on the duration of IgM antibodies and suggest that IgM antibodies are detectable for weeks to months following initial infection.

Negative results do not preclude the possibility of Zika virus infection, past or present. Negative results may be seen in specimens collected before IgM antibodies develop in the first week after

illness onset or after the window of detectable IgM closes.

The Zika MAC-ELISA is intended for use by trained laboratory personnel who are proficient in performing and interpreting immunoassays in qualified laboratories designated by CDC. The Zika MAC-ELISA is only for use under the FDA's EUA.

PROTOCOL USE LIMITATIONS

Modifications to the Zika MAC-ELISA (i.e., use of platforms or chemistries other than those described) is not permitted. The use of this assay is limited to qualified laboratories designated by CDC.

ASSAY PRINCIPLE

Assays that detect viral specific immunoglobulin M (IgM) are advantageous because they detect antibodies produced during the first few days after onset of clinical symptoms in a primary infection, obviating the need for convalescent-phase specimens in many cases. IgM capture is the optimum approach to IgM detection because it is simple, sensitive, and applicable to serum and cerebrospinal fluid (CSF) samples from a variety of animal species (*e.g.* human, equine, avian).

MAC-ELISA assays provide a useful alternative to immunofluorescence for documentation of a serologic response. ELISA is less subjective than immunofluorescence and large numbers of samples can be processed. Anti-IgM (the capture antibody) is coated on 96-well plates. This is followed sequentially by adding the patient's serum, then known non-infectious viral antigen. The presence of antigen is detected by using enzyme-conjugated anti-viral antibody. A colorimetric result is generated by the interaction of the enzyme and a chromogenic substrate. This colorimetric change is detected by a spectrophotometer (ELISA reader).

ASSAY STANDARDIZATION

The Zika MAC-ELISA should be standardized and validated prior to use in the laboratory and re-standardization is required periodically. This should occur when new lots of reagents are introduced, and at the very least, once a year. It is recommended that the mean optical density (OD) of the positive control reacted with the Zika viral antigen be set to approximately 1.0. The mean OD of the Calibration Control serum reacted with the Zika viral antigen must be 0.025-0.19, but ideally between 0.03-0.1. The mean OD of the negative control serum should not yield a positive/negative (P/N) ratio ≥ 2 when divided by the mean OD of the Calibration Control serum. Laboratories must ensure the OD of both the negative control and Calibration Control sera reacted with Viral Antigen is >2 times the OD of each when reacted with Normal Antigen. The standardization of reagents is normally achieved via titration, always comparing the optical densities of the reagents when reacted on viral and normal antigen.

Specimens

ACCEPTABLE SPECIMENS

- Acute and convalescent human sera

NOTE: Serum should be collected in a serum separator tube or a tube that allows the blood to clot without preservatives. Tube should be centrifuged and serum decanted prior to shipment to avoid hemolysis.

- CSF specimens

NOTE: CSF may only be tested when submitted alongside a patient-matched serum specimen

SPECIMEN HANDLING AND STORAGE

Store all diagnostic serum specimens at +2-8°C prior to testing. Avoid repeated freeze-thaw cycles. Transfer all residual specimens and aliquots to $\leq -20^{\circ}\text{C}$ after all anticipated testing has been completed.

SAFETY/PRECAUTIONS

- As a minimum, use universal precautions when handling serum and other potentially infectious material.
- It is recommended that laboratories perform a risk assessment to determine if additional safety precautions are needed.
- Heat treatment of serum (+56°C, 30 minutes) may adversely impact reportable values and is not recommended.
- Please review internal laboratory safety manuals and the Biosafety in Microbiological and Biomedical Laboratories (BMBL, 5th edition) for additional information on laboratory biosafety practices.

Equipment and Consumables

DISCLAIMER: Names of vendors or manufacturers are provided as examples of suitable product sources. Use of trade names is for identification purposes only and does not constitute endorsement by CDC or the Department of Health and Human Services.

MATERIALS REQUIRED TO PERFORM THE ASSAY

ZIKA VIRUS-SPECIFIC REAGENTS

- **Zika viral antigen.**
 - **Zika COS-1 Recombinant Antigen (CDC catalog #AV0005).** Lyophilized non-infectious Zika virus-like particles.

- **Normal antigen.**
 - **Normal Control COS-1 Recombinant Antigen (CDC catalog #AV0006).** Lyophilized normal antigen for use with Zika COS-1 Recombinant Antigen.

NOTE: Both Zika Vero E6 Tissue Culture Antigen (CDC catalog #AV0002 or AV0003), a lyophilized Zika antigen (inactivated), and Normal Vero E6 Antigen (CDC catalog #AV0001), lyophilized normal antigen for use with Zika Vero E6 Tissue Culture Antigen, were previously used in the assay but are not currently available for distribution.

- **Zika IgM antibody positive control.**
 - **Human sera positive for Zika IgM antibodies.** Should be well-characterized human sample that generates a consistently elevated OD.
 - **Flavivirus IgM positive control (CDC catalog #AV0004).** Chimeric monoclonal antibody specific for Flavivirus; lyophilized.

OTHER REAGENTS OR MATERIALS

NOTE: for materials requiring dilution/titration, see **Formulations** below. Materials listed in this section for which specific manufacturers and catalog numbers are provided have been validated for use with this assay and substitutions must not be made.

- Negative Control
 - Negative Control Serum: This control serum is run alongside patient specimens and is treated the same as a patient specimen; OR
 - Negative Control CSF: This control CSF is run alongside patient specimens and is treated the same as a patient specimen.
- Calibration Control Serum: Normal human serum that has tested negative for Zika antibodies.

NOTE: The Negative Control and Calibration Control Sera should come from different source materials and cannot be used interchangeably.

- Detecting antibody conjugate: Horseradish peroxidase conjugated monoclonal antibody 6B6C-1. Available from:
 - InBios. Either item number listed below is acceptable for use. However, more volume will be required when using the diluted product (Item 500510D) than for the undiluted product (Item 500510).
 - Item 500510: 6B6C-1/HRP Conjugate (Undiluted), 50 µL
 - Item 500510D: 6B6C-1/HRP Conjugate (1/100 Diluted from Stock), 1mL
 - Flavivirus group-specific conjugate MAB 6B6C-1/HRP (CDC, catalog #AV0007).
- Goat anti-human IgM (SeraCare, catalog #5210-0157; this was previously distributed and

labelled as KPL catalog #01-10-03)

- Deionized water
- Hydrochloric acid (to adjust pH of coating buffer)
- Sodium carbonate (Na_2CO_3); (available from multiple commercial sources, e.g. Sigma, Thermo Fisher, etc.)
- Sodium bicarbonate (NaHCO_3); (available from multiple commercial sources, e.g. Sigma, Thermo Fisher, etc.)
- Phosphate buffered saline (PBS); (available from multiple commercial sources, e.g. Sigma, Thermo Fisher, etc.)
- Tween 20 (available from multiple commercial sources, e.g. Sigma, Thermo Fisher, etc.)
- Nonfat dry milk (available from multiple commercial sources, e.g. Sigma, Thermo Fisher, etc.)
- Sulfuric acid (H_2SO_4) (available from multiple commercial sources, e.g. Sigma, Thermo Fisher)
- Enhanced K-Blue TMB substrate (3,3', 5, 5' tetramethylbenzidine base; Neogen Corp, catalog # 308175, also available in additional volumes)
- Immulon II HB flat-bottomed 96 well plates, ThermoFisher Scientific catalog #3455
NOTE: This is the only 96 well plate approved for this assay.
- Microplate washer
- Microplate reader with 450 nm filter
- Biosafety cabinet (BSC)
- Incubator set at 37°C
- Autoclave
- Single and multi-channel pipettors
- Pipet tips for laboratory-specific pipettors
- Reagent reservoirs
- Timer
- Reagent mixing bottles; sterile plastic or glass bottles; Gibco or alternate vendor
- Microfuge or similar tubes to dilute patient serum; purchase sterile or autoclave and cool before use; Corning or alternate vendor
- Weigh boats for measuring dry chemical components, chemical resistant
- Gloves
- Lab coats
- Vortex mixer
- Permanent marker
- **OPTIONAL:** Dynex Agility[®] automated ELISA processing system (Appendix A) and Dynex DSX[®] automated ELISA processing system (Appendix B)

NOTE: These instruments must not be used for coating the plates with goat anti-human IgM. The plate coating procedure should be performed manually.

Contact Dynex Technologies for additional information. 14340 Sullyfield Circle
Chantilly, VA 20151-1621
800-288-2354
customerservice@dynextechnologies.com

Formulations

NOTE: Dilutions listed in individual reagent package inserts are a starting point for titration and vary by lot. The optimum dilution needs to be determined in the laboratory prior to use. See additional information on Assay Standardization on page 4.

- Coating buffer: Carbonate/bicarbonate buffer, pH 9.6 (adjust pH with HCl if necessary)
 - 1.59 g Na₂CO₃ + 2.93 g NaHCO₃ diluted in 1 L water.
- Wash buffer: Phosphate buffered saline (PBS); 0.05% Tween 20, pH 7.2.
 - PBS is available in liquid or powdered form from multiple commercial sources
- Blocking buffer: PBS/ 5% milk/ 0.5% Tween 20
- Stop solution: 1 N H₂SO₄
- Detecting antibody conjugate (diluted in blocking buffer, titration required)
- Flavivirus IgM positive control (diluted in wash buffer, titration required)
- Zika viral antigen, Zika COS-1 Recombinant Antigen (diluted in wash buffer, titration required)
- Normal antigen, Normal Control COS-1 Recombinant Antigen (diluted in wash buffer, titration required)
- Goat anti-human IgM: diluted 1:2000 in coating buffer
- Patient serum: diluted 1:400 in wash buffer (no titration required)
- Negative Control Serum: Normal human serum diluted to 1:400 in wash buffer (no titration required)
- Calibration Control Serum: Normal human serum diluted 1:400 in wash buffer (**no** titration required)

NOTE: Choose patient sera for your Negative Control Serum and Calibration Control Serum that have been previously tested in the Zika MAC-ELISA and found to have the desired characteristics outlined in the assay standardization section.

Quality Control

GENERAL CONSIDERATIONS

- Personnel must be familiar with the protocol and instruments used.
- Wear clean, disposable gowns and new, powder-free gloves during assay reagent setup and handling. Change gloves whenever you suspect they may be contaminated.

- Store all reagents at appropriate temperatures (see product inserts). Do not use reagents beyond their expiration dates.
- Keep reagent tubes capped as much as possible.

ASSAY CONTROLS

Antibody controls:

- Positive control: Positive patient serum or flavivirus IgM positive control (run with each plate)
- Negative Control Serum: normal human serum
NOTE: To comply with CLIA regulations, the Negative Control Serum must be run at least once per day.
- Calibration Control Serum: normal human serum (run with each plate)

Background Determination:

- Specimen reacted with Normal antigen (to measure background signal generated by the specimen).

Zika MAC-ELISA Procedure

NOTES REGARDING THE ZIKA MAC-ELISA PROCEDURE:

- Plates can be coated and kept at 2-8°C for up to a week. (See Step 2: Coating the Plates, below).
- Refer to reagent package inserts for recommended storage conditions.
- Reconstituted, undiluted viral and normal antigens can be stored at -20°C for up to one year.
- Positive, calibration, and negative controls should be prepared immediately prior to testing.
- Antigens and conjugate must be diluted to laboratory established working dilutions immediately prior to use.
- To keep timing of reagent addition consistent, process plates in the order they are numbered during all steps of the procedure.
- Plates should be kept in an enclosed, humidified environment during all incubation times with the exception of the coating, blocking, and substrate steps. Adhesive film or a large Ziploc type bag containing a moist paper towel can be used to maintain humidity during incubation steps. An empty plate can also be used to cover plates, but care must be taken when removing as condensation may have formed during incubation.

NOTE: EACH SERUM SPECIMEN IS TESTED IN TRIPLICATE WITH BOTH ZIKA AND NORMAL ANTIGENS. SEVEN (7) TO EIGHT (8) TEST SPECIMENS CAN BE ANALYZED PER PLATE. DUE TO LIMITED VOLUME, CSF SPECIMENS ARE USUALLY ONLY TESTED

SINGLY AGAINST BOTH VIRAL AND NORMAL ANTIGENS.

1. PREPARING THE PLATE:

- Determine the number of ELISA plates needed. Using a fine-tipped permanent marker, number and label the 96-well plates. Identify the location of each clinical specimen, positive control, negative control, and Calibration Control serum by using a corresponding template (see Figure 1).

2. COATING THE PLATES:

- Dilute goat anti-human IgM 1:2000 in coating buffer, pH 9.6.
- Coat the inner 60 wells of the 96 well plate with 75 μ L per well of diluted goat anti-human IgM. Leave outer rows/columns empty (see Fig. 1).
- Incubate at **2-8°C overnight**. Plates should remain at 2-8°C until needed for testing, up to one week.

3. BLOCKING THE PLATES:

- After overnight incubation, invert each plate over a sink or container and manually remove the coating antibody with a vigorous downward movement.
- Blot plates forcefully on paper towels or other absorbent material to remove excess liquid.
- Block plates with 200 μ L blocking buffer per well.
- Incubate with the top plate covered at **room temperature for 30 minutes**.

4. WASHING THE PLATES:

- Wash wells 5X with wash buffer by using an automatic plate washer.
- Wells should be filled with 300 μ L wash buffer per cycle.

5. ADDITION OF SPECIMEN/CONTROLS:

NOTE: The procedure outlined below is for the manual processing of the samples/controls. To use the Dynex Agility[®] or DSX[®] systems for automated ELISA processing, refer to the appendices included at the end of the document.

- Dilute all patient serum specimens prior to testing. Patient serums, Negative Control, and Calibration Control should be diluted 1:400 in wash buffer. Positive control should be diluted in wash buffer at a concentration previously determined through titration.
- Vortex briefly, and add 50 μ L per well of the diluted patient serum specimen to a block of 6 wells (see Fig. 1) or undiluted CSF to only two wells. CSF will be tested singly against the Zika viral antigen and Normal antigen.
NOTE: CSF can be diluted to a maximum of 1:5 in wash buffer if necessary to obtain enough volume for testing. CSF negative for Zika IgM antibodies should also be run as a negative control.
- Vortex briefly, and add 50 μ L per well of diluted positive control to a block of 6 wells (see Fig. 1).

- At least once per run, vortex briefly, and add 50 μ L per well of diluted negative control to a block of 6 wells (see Fig. 1).
 - Incubate plates for **1 hour at 37°C** in a humidified chamber.
6. PREPARE THE ZIKA AND NORMAL ANTIGENS:
- Dilute **Zika** viral antigen in wash buffer according to a previously determined titration.
 - Dilute **Normal** antigen in wash buffer to the same concentration as the Zika viral antigen.
7. WASHING THE PLATES:
- Wash wells 5X with wash buffer by using an automatic plate washer.
 - Wells should be filled with 300 μ L wash buffer per cycle.
8. ADDITION OF ANTIGEN:
- Vortex briefly and add 50 μ L per well of diluted **Zika** viral antigen to the left three wells of each block (see Fig 1).
 - Vortex briefly and add 50 μ L per well of diluted **Normal** antigen to the right three wells of each block (see Fig. 1).
 - Incubate plates **overnight at 2-8°C** in a humidified chamber.
9. DILUTE CONJUGATE:
- Dilute the detecting antibody conjugate in blocking buffer at a concentration previously determined through titration.
10. WASHING THE PLATES:
- Wash wells 5X with wash buffer by using an automatic plate washer.
 - Wells should be filled with 300 μ L wash buffer per cycle.
11. ADDITION OF CONJUGATE:
- Add 50 μ L per well of the diluted detecting antibody conjugate.
 - Incubate plates for **1 hour at 37°C** in a humidified chamber.
 - Turn on plate reader to warm up.
 - Remove Enhanced K-Blue TMB substrate from refrigerator, and bring to room temperature.
12. WASHING THE PLATES:
- Wash wells 5X **twice** with wash buffer by using an automatic plate washer.
 - Turn the plates 180° in the washer after the first series of 5 washes.
 - Wells should be filled with 300 μ L wash buffer per cycle.
13. ADDITION OF SUBSTRATE:
- With the plate at room temperature (20-25°C), add 75 μ L per well of Enhanced K-Blue TMB substrate to the inner 60 wells.
 - Immediately move plate to a dark location. Incubate uncovered at room temperature for exactly 10 minutes.
 - A blue color will develop in antibody-positive wells.

14. ADDITION OF STOP SOLUTION:

- Add 50 μL per well of stop solution to all wells, including the outer rows of wells on the plate.

NOTE: The plate reader should be set to zero itself on some of the outer wells

- The wells that were blue will now change to a yellow color.
- Allow plates to sit at room temperature for 1 minute.
- Read plates in microtiter plate reader by using a 450 nm filter. Plates can be read up to 10 minutes after the addition of stop solution.

	1	2	3	4	5	6	7	8	9	10	11	12
A	EMPTY	EMPTY	EMPTY	EMPTY	EMPTY	EMPTY	EMPTY	EMPTY	EMPTY	EMPTY	EMPTY	EMPTY
B	EMPTY	Viral Antigen	Normal Antigen	Viral Antigen	Normal Antigen	Viral Antigen	Normal Antigen	Viral Antigen	Normal Antigen	Viral Antigen	Normal Antigen	EMPTY
C	EMPTY	Viral Antigen S1	Normal Antigen	Viral Antigen S3	Normal Antigen	Viral Antigen S5	Normal Antigen	Viral Antigen S7	Normal Antigen	Viral Antigen REF	Normal Antigen	EMPTY
D	EMPTY	Viral Antigen	Normal Antigen	Viral Antigen	Normal Antigen	Viral Antigen	Normal Antigen	Viral Antigen	Normal Antigen	Viral Antigen	Normal Antigen	EMPTY
E	EMPTY	Viral Antigen	Normal Antigen	Viral Antigen	Normal Antigen	Viral Antigen	Normal Antigen	Viral Antigen	Normal Antigen	Viral Antigen	Normal Antigen	EMPTY
F	EMPTY	Viral Antigen S2	Normal Antigen	Viral Antigen S4	Normal Antigen	Viral Antigen S6	Normal Antigen	Viral Antigen S8 or NC	Normal Antigen	Viral Antigen CCS	Normal Antigen	EMPTY
G	EMPTY	Viral Antigen	Normal Antigen	Viral Antigen	Normal Antigen	Viral Antigen	Normal Antigen	Viral Antigen	Normal Antigen	Viral Antigen	Normal Antigen	EMPTY
H	EMPTY	EMPTY	EMPTY	EMPTY	EMPTY	EMPTY	EMPTY	EMPTY	EMPTY	EMPTY	EMPTY	EMPTY

Figure 1: Recommended Plate layout for specimens and controls.

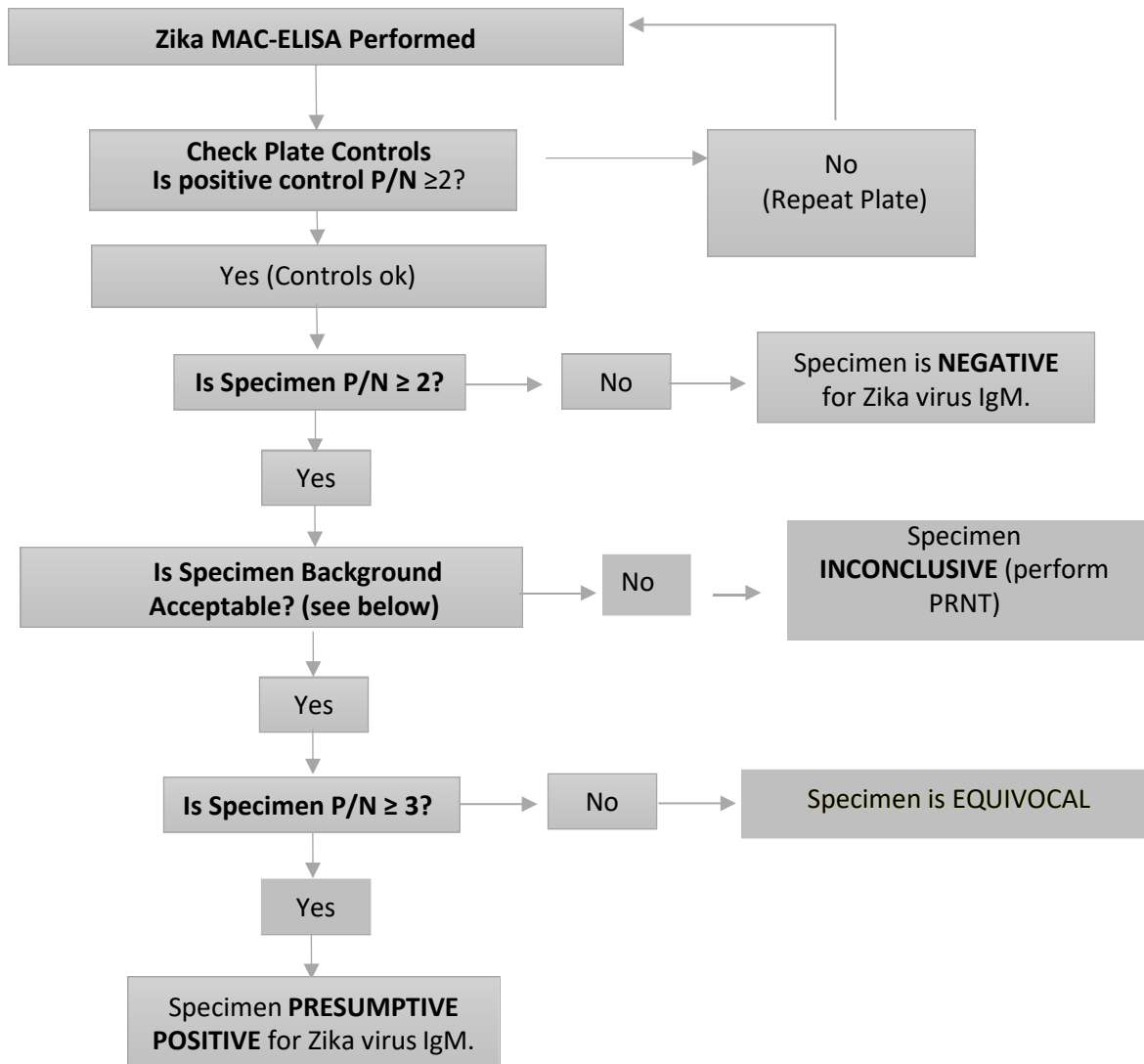
Abbreviations: CCS = Calibration Control Serum; NC = negative control; REF = positive control; and S = Specimen.

IMPORTANT NOTE: If using the Dynex Agility® or DSX® automated ELISA processing system, the plate layout will differ from the layout shown. Please refer to Appendix A and B for the correct plate layout.

Interpreting Test Results

Prior to reporting results, check that all quality control and assay validation specifications pass (Figure 2).

Figure 2: Summary of Test Results Interpretation



TEST VALIDITY DETERMINATION

Before the results can be calculated for each clinical specimen, the test must be determined to be valid. Test validity must be determined for each plate. Results for clinical specimens may only be calculated once a test has been determined to be valid. If the test is not valid, then that plate must be repeated.

1. The mean OD of the Calibration Control Serum reacted with Zika viral antigen must be in the absolute range of 0.025-0.19.
2. The plate reader should be set to zero itself on some of the outer wells. It is recommended that high outliers be excluded before calculating the mean for subtraction from the test wells. A high outlier can cause the plate background subtraction to reduce the Calibration Control Serum OD and potentially lead to false-positive results.
3. The Positive Control P/N ratio [Mean OD of the positive control reacted with Zika viral antigen (P) / Mean OD of the Calibration Control Serum reacted with Zika viral antigen (N)] should be > 2 . If it is not, the plate should be rejected from further analysis.
4. The Negative Control P/N ratio [Mean OD of the Negative Control Serum reacted with Zika viral antigen (P) / Mean OD of the Calibration Control Serum reacted with Zika viral antigen (N)] should be < 2 and the mean OD of the negative and Calibration Control Sera < 0.2 . If it is not, the plate should be rejected from further analysis.

DETERMINATION OF SPECIMEN P/N

To determine whether the clinical specimens contain IgM to the Zika virus, the following must be calculated:

$$\frac{\text{Mean OD of the specimen reacted with Zika viral antigen (P)}}{\text{Mean OD of the Calibration Control Serum reacted with Zika viral antigen (N)}}$$

This is the P/N of the clinical specimen.

All specimens for which specimen P/N is < 2 , report as **negative**. See Table 1 below.

SPECIMEN BACKGROUND EVALUATION

For each clinical specimen with a specimen P/N ≥ 2 , determine whether non-specific background is being generated.

The value of P (mean of the specimen reacted with Zika viral antigen) for the clinical specimen must be greater than or equal to twice (2X) the mean OD of the specimen reacted with normal antigen. If this requirement is not met, non-specific background is being generated and the result **MUST** be reported as **inconclusive**. Inconclusive specimens should be retested or tested by an

alternative assay (e.g., plaque reduction neutralization test [PRNT]).

Table 1: Overview of Assay Calculations

Calculation	Ratio	Result
Positive Control P/N	$\frac{\text{Mean OD of the positive control reacted with Zika viral antigen (P)}}{\text{Mean OD of the Calibration Control serum reacted with Zika viral antigen (N)}}$	< 2 Plate IS NOT Valid
		≥ 2 Plate IS Valid
Negative Control P/N	$\frac{\text{Mean OD of the negative control reacted with Zika viral antigen (P)}}{\text{Mean OD of the Calibration Control serum reacted with Zika viral antigen (N)}}$	< 2 Plate IS Valid
		≥ 2 Plate IS NOT Valid
Specimen Background P/N for specimens with Specimen P/N ≥ 2 (See Figure 2)	$\frac{\text{Mean OD of the specimen reacted with Zika viral antigen}}{\text{Mean OD of the specimen reacted with Normal antigen}}$	< 2 Specimen is Inconclusive
		≥ 2 Specimen can be interpreted as equivocal or presumptive positive based on P/N value

ANALYSIS OF POSITIVE AND EQUIVOCAL RESULTS

All test specimens verified to have a P/N values greater than or equal to 3.0 should be reported as **presumptive IgM-positive**. P/N values that lie between 2.0 and 3.0 should be considered **equivocal**.

If Zika virus antibody testing is equivocal or positive and diagnosis is needed for clinical or epidemiological purposes, confirmatory PRNTs should be performed against dengue, Zika, and other flaviviruses endemic to the region where exposure occurred. Please see latest testing guidance at https://www.cdc.gov/mmwr/zika_reports.html.

It should be stressed that the P/N value for a specimen at the screening dilution of 1:400 is not an indication of absolute antibody concentration, i.e., the P/N value is not quantitative.

Zika virus infections and disease are nationally notifiable. All positive results should be reported to the respective state or territorial health department for investigation and case determination.

Assay Limitations

Interpretation of Zika MAC-ELISA results must account for the possibility of false-negative and false-positive results. False-negative results can arise from:

- Specimen collection conducted before IgM has reached detectable levels.
- Specimen collection conducted after IgM levels have decreased below detectable levels.
- Failure to follow the authorized assay procedures.

The most common cause of false-positive results is cross-reactivity with IgM specific for other flaviviruses such as dengue virus (51%), WNV (35%), SLE (47%), and JEV (33%). Limited evaluation of cross-reactivity with arboviruses was conducted and indicates that recent co-infection of Zika and Chikungunya 13% (5/38). No evaluation of cross-reactivity with Rheumatoid Factor has been conducted. Follow-up testing can be performed to rule-out a false-positive result. The gold-standard method for confirmation of the presence of anti-Zika antibodies is the PRNT.

Negative results do not preclude infection with Zika virus and should not be used as the sole basis for patient treatment/management decisions. All results should be interpreted by a trained health care provider in conjunction with review of the patient's history and clinical signs and symptoms.

This assay is for *in vitro* diagnostic use under FDA Emergency Use Authorization only and is limited to qualified laboratories designated by CDC.

Caution: Federal law restricts this device to sale by or on the order of a licensed practitioner.

All specimens should be handled as if they are infectious. Proper biosafety precautions, including personal protective equipment, must be used when handling specimen materials.

Proper collection, storage, and transport of specimens are essential for correct results.

Performance has only been established with the specimen types listed in the Intended Use. Other specimen types are not acceptable for use with this assay.

This product has not been FDA cleared or approved, but has been authorized for emergency use by FDA under an EUA for use by authorized laboratories;

This product has been authorized only for the diagnosis of Zika virus infection and not for any other viruses or pathogens; and

The emergency use of this product is only authorized for the duration of the declaration that circumstances exist justifying the authorization of the emergency use of *in vitro* diagnostic tests for detection of Zika virus and/or diagnosis of Zika virus infection under section 564(b)(1) of the Act, 21 September 27, 2023

U.S.C. § 360bbb-3(b)(1), unless the declaration is terminated or authorization is revoked sooner.

CONDITIONS FOR AUTHORIZATION FOR THE LABORATORY

The Zika MAC-ELISA Letter of Authorization, along with the authorized Fact Sheet for Healthcare Providers, the authorized Fact Sheet for Patients and authorized labeling are available on the FDA website: <https://www.fda.gov/medical-devices/emergency-situations-medical-devices/emergency-use-authorizations-medical-devices#zika>. Use of the Zika MAC-ELISA must follow the procedures outlined in these manufacturer's Instructions for Use and the conditions of authorization outlined in the Letter of Authorization. Deviations from the procedures outlined are not permitted under the Emergency Use Authorization. To assist laboratories running the Zika MAC-ELISA, the relevant Conditions of Authorization are listed verbatim below.

- Authorized laboratories using your product must include with test result reports all authorized Fact Sheets. Under exigent circumstances, other appropriate methods for disseminating these Fact Sheets may be used, which may include mass media.
- Authorized laboratories using your product must use your product as outlined in the authorized labeling. Deviations from the authorized procedures, including the authorized instruments, authorized extraction methods, authorized clinical specimen types, authorized control materials, authorized other ancillary reagents and authorized materials required to use your product are not permitted.
- Authorized laboratories that receive your product must notify the relevant public health authorities of their intent to run your product prior to initiating testing.
- Within the United States and its territories, authorized laboratories using your product must report all equivocal and presumptive positive results to CDC.
- Authorized laboratories using your product must have a process in place to assure that positive or equivocal results are considered in conjunction with any additional testing, and/or are considered alongside test results for other patient-matched specimens, recommended using the CDC-issued algorithm.
- Authorized laboratories using your product must have a process in place for reporting test

results to health care providers and relevant public health authorities, as appropriate. ¹

- Authorized laboratories must collect information on the performance of your product and report to DMD/OHT7/OPEQ/CDRH (via email: CDRH-EUA-Reporting@fda.hhs.gov) and you (via email: reagents2@cdc.gov) any suspected occurrence of false negative results and significant deviations from the established performance characteristics of your product of which they become aware.
- All laboratory personnel using your product should be appropriately trained in performing and interpreting immunoassays techniques, use appropriate laboratory and personal protective equipment when handling this kit, and use your product in accordance with the authorized labeling.

Performance Characteristics

Cross Reactivity

Flavivirus Cross-reactivity

Banked, well-characterized sera from CDC's repository were selected to evaluate the cross-reactivity of the Zika MAC-ELISA. Zika MAC-ELISA was performed on these samples using the Zika Vero E6 antigen set and Flavivirus group-specific conjugate MAB 6B6C-1/HRP combination. For the other flavivirus infections, IgM results were confirmed by PRNT. Overall, flaviviral infections demonstrated variable cross-reactivity in the Zika MAC-ELISA (Table 2). There was substantial cross-reactivity in the Zika MAC-ELISA to dengue virus IgM antibodies. When restricted to dengue virus infections with neutralizing antibodies to only one of the four serotypes (n=44), the cross-reactivity observed in the Zika MAC-ELISA was reduced to 39% (n=17) of specimens testing positive in the Zika MAC-ELISA.

¹ For questions related to reporting Zika test results to relevant public health authorities, it is recommended that CDC and authorized laboratories consult with the applicable country, state, or territory health department(s). According to CDC, Zika is a nationally notifiable condition. <https://www.cdc.gov/nndss/conditions/notifiable/2016/>.

Table 2: Flavivirus Cross-reactivity Summary

Flavivirus	Specimen description	Number of Specimens Tested	Number and percent of Specimens Positive by Zika MAC-ELISA
WNV	Sera from confirmed West Nile virus cases	155	54 (35%)
SLE	Sera from confirmed St. Louis encephalitis virus cases	68	32 (47%)
DENV	Sera from confirmed dengue virus cases*	111	57 (51%)
JEV	Sera from confirmed Japanese encephalitis virus cases	36	12 (33%)
POWV	Sera from confirmed Powassan virus cases	75	7 (9%)
YFV	Sera from individuals vaccinated against yellow fever virus	110	3 (2.7%)

*dengue cases may have been exposed to one or more dengue virus serotype

Non-flavivirus Cross-reactivity

Arboviruses were originally delineated into three groups based on significant serological differences and characterized with early, crude serological techniques. These delineations remain: Group A viruses are now alphaviruses; Group B are now flaviviruses; and Group C are now bunyaviruses. As serological methods have evolved, the serological distinctions that originally defined the groups mean that cross-reactivity between groups in immunoassays is not expected. Additionally, the literature (Martin, et al., 2000) indicates that only minimal cross-reactivity is expected with IgM against other alphaviruses and bunyaviruses.

Chikungunya virus is an alphavirus that often co-circulates in the same areas as Zika and dengue viruses. Thirty-eight human serum samples from confirmed chikungunya virus cases were also tested by Zika MAC-ELISA. The majority (n=33; 87%) of samples tested negative for Zika virus IgM antibodies. A total of five specimens tested positive for Zika virus IgM antibodies. In three of the five samples, the Zika IgM antibodies were confirmed by PRNT, suggesting recent infections with both viruses. In two samples, the Zika IgM results were not confirmed though extensive cross-neutralization testing was not performed to determine if the positive results was due to flavivirus cross-reactivity or non-specific reactivity.

Clinical Performance

Performance with U. S. Specimens Submitted to CDC, Ft. Collins, Jan 2015 to Apr 2018

In the period from January 2015 to April 25, 2018, 3,059 unique sera and 29 unique CSF specimens were tested by both the CDC Zika MAC-ELISA and by the CDC Zika PRNT assay. Zika MAC-ELISA was performed on these specimens using the Zika Vero E6 antigen set and Flavivirus group-specific conjugate MAB 6B6C-1/HRP combination. PRNT results presented in this section were interpreted based on the Interim Guidance for Interpretation of Zika Virus Antibody Test Results that pertained to that time period (Rabe et al., 2016).

Summary of Clinical Performance with Sera

The resulting data set used in this analysis contains the 3,059 unique serum specimens. A summary of results for these sera is presented in Table 3. A total of 1,292 of these sera were from pregnant women. Results include only women whose test records indicate they were pregnant at the time of specimen collection. A summary of data for the subset of sera from pregnant women is presented in Table 4.

Table 3: Data for Sera Submitted to CDC Ft. Collins for Testing Jan 2015-Apr 2018

		PRNT Results			
		Zika	Flavivirus	dengue	negative
Zika MAC- ELISA	positive	414	802	103	237
	equivocal	33	138	69	279
	negative	12	107	157	708

Positive percent agreement for Zika MAC-ELISA IgM positives (PRNT definitive Zika positives only): 414/459 = 90.20% (95% CI: 87.13%- 92.59%)

Positive percent agreement for Zika MAC-ELISA IgM positives and equivocals (PRNT definitive Zika positives only): 447/459 = 97.39% (95% CI: 95.49% - 98.50%)

Table 4: Data for Sera from Pregnant Women Submitted to CDC Ft. Collins for Testing Jan 2015-Apr 2018

		PRNT Results			
		Zika	Flavivirus	dengue	Negative
Zika MAC- ELISA	Positive	64	323	26	128
	Equivocal	9	80	33	166
	Negative	1	40	79	343

Positive percent agreement for Zika MAC-ELISA IgM positives (PRNT definitive Zika positives only): 64/74 = 86.49% (95% CI: 76.55% – 93.32%)

Positive percent agreement for Zika MAC-ELISA IgM positives and equivocals (PRNT definitive Zika positives only): 73/74 = 98.65% (95% CI: 92.70% - 99.97%)

Summary of CSF Data

Twenty-five CSF specimens were tested by CDC Arbovirus Diseases Branch using the Zika MAC-ELISA. Three CSF samples yielded positive Zika MAC-ELISA results confirmed by PRNT. The remaining 22 CSF samples were negative by the Zika-MAC ELISA.

Evaluation of Performance with Primary and Secondary Zika Infections, Yap State, Micronesia, 2007

The CDC Zika MAC-ELISA was included in a battery of CDC MAC-ELISA and PRNT flavivirus immunological methods for the evaluation of paired serum specimens from 11 Zika virus cases identified in a Zika outbreak in Yap State, Micronesia in 2007 (Lanciotti, et al., 2008). At the time of this outbreak, the Zika MAC-ELISA employed sucrose-acetone extracted (BPL inactivated) suckling mouse brain antigen and Flavivirus group-specific conjugate MAB 6B6C-1/HRP. Four of the 11 cases are primary flavivirus infections, while seven are probable secondary flavivirus infections.

Of the paired sera collected and evaluated in the publication, all but one patient has at least one serum specimen within our claimed window of ≥ 4 days post onset of symptoms and < 12 weeks post onset of symptoms. For each of the remaining 10 cases, the earliest collected serum specimen within our claimed window is included in our analysis.

Zika MAC-ELISA results for these specimens are compared to their Plaque Reduction Neutralization Test (PRNT) results, the gold standard for flavivirus immunological testing in Table 5 (below).

Table 5: Summary of Zika MAC-ELISA and Flavivirus PRNT Results for earliest within-window specimens for primary and secondary Zika infections in Yap State, Micronesia, 2007

	Case	Specimen	Days Post Onset	Zika MAC-ELISA	PRNT (7 flaviviruses)	
Primary Infections	822	822a	5	23.2	Zika	
	830	830b	21	16.3	Zika	
	849	849b	18	18.2	Zika	
	862	862a	6	25.4	Zika	
Probable Secondary Infections	817	817b	19	8.1	flavivirus	
	833	833b	19	3.1	Zika	
	844	844b	16	12.7	dengue	
	955	955b	14	10.9	flavivirus	
	968	No specimens within claimed window				
	839	839b	20	17.2	Zika	
	847	847a	5	0.94	yellow fever	

PRNT Results (7 flaviviruses)					
		Zika	flavivirus	dengue	yellow fever

Zika MAC- ELISA	Positive	6	2	1	0
	Negative	0	0	0	1

Primary infections:

All four cases identified as primary infections yielded positive Zika MAC-ELISA results for their initial within-window serum specimen. These four specimens also yielded positive results by PRNT for Zika virus infection.

Secondary Infections (probable):

Of the six cases with within-window serum specimens, five yielded positive results for the earliest collected within-window serum specimens by Zika MAC-ELISA. Two of these (833b and 839b) yielded clearly positive results for Zika virus infection by PRNT. Two other specimens (817b and 955b) yielded greater PRNT results for Zika virus than for any of the other flaviviruses tested. However, these results were not 4-fold higher than all other results, thus were interpreted a Flavivirus positive by PRNT. The remaining specimen yielded positive results for Zika MAC-ELISA and 4-fold higher PRNT results for Dengue than for Zika, the only specimen for which the PRNT did not agree with the Zika MAC- ELISA.

Specimen 847a, a day 5 specimen, was negative by Zika MAC-ELISA and was positive for Yellow Fever Virus by PRNT. No neutralization effect was observed for Zika by PRNT. Thus, the MAC-ELISA and PRNT results for this specimen are in agreement.

Evaluation of Performance of COS-1 Recombinant Antigens in the Zika MAC-ELISA, 2016

A panel of 51 serum specimens were tested side-by-side with the Zika MAC-ELISA using the Vero E6 antigens (Zika Vero E6 Antigen and Normal Vero E6 Antigen) and the COS-1 recombinant antigens (Zika COS-1 Recombinant Antigen and Normal Control COS-1 Recombinant Antigen). Both antigen sets were tested with the Flavivirus group-specific conjugate MAB 6B6C-1/HRP. Specimens were selected for testing to represent a range of P/N values observed in diagnostic testing across positive, equivocal and negative results, with a larger proportion of specimens near the assay negative/equivocal cutoff and near the equivocal/positive cutoff. Results of testing demonstrated equivalent performance of the COS-1 recombinant antigens and support their inclusion in the Zika MAC-ELISA as an acceptable alternative to the Vero E6 antigens.

Evaluation of normal human serum as Calibration Control Serum and Negative Control Serum

for a total of 600 data points run from April 2016 to April 2018 were analyzed to determine performance characteristics for Calibration and Negative Control Serum. These assays were performed by 10 different operators in 3 distinct laboratories at CDC Ft. Collins. The OD data range based on log normal distribution was found to have a 99% CI of 0.025 to 0.207. The mean OD was 0.086 and the median OD was 0.074. The standard deviation was 0.052. These characteristics were further validated using various negative samples.

Evaluation of Dynex Agility and DSX Automated Microplate Processors Side-by-Side with Manual Method

A panel of 56 serum specimens were tested with the Zika MAC-ELISA using the Zika Vero E6 Antigen set and Flavivirus group-specific conjugate MAB 6B6C-1/HRP using the authorized manual method. These specimens were also tested using the same antigen/conjugate combination on the Dynex Agility and DSX automated microplate processors. Results of testing demonstrated non-inferior performance of the Dynex Agility and DSX automated microplate processors and support their inclusion in the Zika MAC-ELISA as acceptable alternatives to the authorized manual method.

Variance

To establish the variance of the Zika MAC-ELISA, three scientists in one laboratory tested each specimen in a panel of eight BARDA specimens 42 times. Variance was established using the Vero E6 antigen set and the Flavivirus group-specific conjugate MAB 6B6C-1/HRP. Result interpretations from this study were compared to the originally reported Zika MAC-ELISA and PRNT interpretations available for each sample. Coefficients of Variation were also calculated to show within-sample variance for the mean P/N and mean OD. A summary of findings is presented in Table 6 below.

Table 6: Variance - Flavivirus group-specific conjugate MAB 6B6C-1/HRP reacted with Vero E6 Antigens

SAMPLE	P/N Mean	P/N CV	OD Mean with Zika Antigen	OD CV with Zika Antigen	INTERPRETATION						
					EQUIV	INC	NEG	POS	Total	Original MAC-ELISA Result	Original PRNT Result
1	1.79	52.676	0.101	92.48	9	2	25	6	42	Negative	flavivirus
8	15.489	32.813	0.766	57.333	0	0	0	42	42	Presumptive Positive	flavivirus
7	27.201	38.124	1.256	42.467	0	0	0	42	42	Presumptive Positive	flavivirus
4	2.565	36.218	0.139	78.29	16	0	14	12	42	Presumptive Positive	Zika
3	2.26	30.955	0.113	59.969	22	6	11	3	42	Presumptive Positive	flavivirus
6	23.47	42.076	1.095	48.135	0	0	0	42	42	Presumptive Positive	Zika
2	2.605	30.838	0.134	65.009	7	16	8	11	42	Equivocal	flavivirus
5	10.417	41.122	0.525	65.544	0	0	0	42	42	Presumptive Positive	Zika
Negative control	N/A	N/A	0.053	58.348	N/A	N/A	N/A	N/A	N/A		
Positive Control	14.317	72.12	0.602	49.562	N/A	N/A	N/A	N/A	N/A		
Total	N/A	N/A	N/A	N/A	54	24	58	200	336		

Performance across Authorized Reagent Combinations

Performance of the Zika MAC-ELISA was then evaluated across the three antigen set/detecting antibody conjugate combinations not employed in the variance study. The study used the same panel of eight BARDA specimens used in the variance evaluation across all antigen sets and conjugates. Each specimen was tested by each of the three remaining combinations of antigen sets and conjugates in two laboratories by three scientists per laboratory for a total of 30 replicates per specimen per reagent combination. The P/N values were assigned for 8 BARDA samples using the Vero E6 antigen set and Flavivirus group-specific conjugate MAB 6B6C-1/HRP combination and were used as a baseline to compare the other combinations against. A summary of the slope, intercept and R² for regressions of the authorized reagent combinations versus the pre-assigned values are presented in Table 7 below. Furthermore, sample interpretations from these authorized reagent combinations were compared to the originally reported Zika MAC-ELISA and PRNT interpretations available for each BARDA specimen. Coefficients of Variation were also calculated to show within-sample variance for the mean P/N and mean OD. A summary is presented in Tables 8-10 below.

Table 7: Performance Across Authorized Reagent Combinations - Summary

Reagent Combination (Conjugate/Antigen)	Intercept	Slope	R ²
Flavivirus /Vero E6	4.77E-15	1	0.8846
Flavivirus/COS-1	-0.03579	0.9086	0.8934
InBios/COS-1	0.12922	1.09344	0.872
InBios/Vero E6	0.21003	1.03235	0.8296

Table 8: Performance Across Authorized Reagent Combinations – Flavivirus group-specific conjugate MAB 6B6C-1/HRP reacted with COS-1 Antigens

SAMPLE	P/N Mean	P/N CV	OD Mean with Zika Antigen	OD CV with Zika Antigen	INTERPRETATION						
					EQV	INC	NEG	POS	Total	Original MAC-ELISA Result	Original PRNT Result
1	1.404	24.006	0.057	27.459	1	1	28	0	30	Negative	flavivirus
8	12.384	39.379	0.495	34.492	0	0	0	30	30	Presumptive Positive	flavivirus
7	23.071	31.961	0.929	27.926	0	0	0	30	30	Presumptive Positive	flavivirus
4	2.301	35.575	0.093	29.185	13	3	12	2	30	Presumptive Positive	Zika
3	1.95	22.689	0.079	21.941	9	2	19	0	30	Presumptive Positive	flavivirus
6	13.212	41.383	0.527	36.041	0	0	0	30	30	Presumptive Positive	Zika
2	2.048	21.9	0.083	21.803	1	9	20	0	30	Equivocal	flavivirus
5	6.64	39.926	0.265	34.187	1	0	0	29	30	Presumptive Positive	Zika
Negative control	N/A	N/A	0.041	21.781	N/A	N/A	N/A	N/A	N/A		
Positive Control	14.737	44.938	0.579	34.018	N/A	N/A	N/A	N/A	N/A		
Total	N/A	N/A	N/A	N/A	25	15	79	121	240		

Table 9: Performance Across Authorized Reagent Combinations – InBios conjugate reacted with COS-1 Antigens

SAMPLE	P/N Mean	P/N CV	OD Mean with Zika Antigen	OD CV with Zika Antigen	INTERPRETATION						
					EQV	INC	NEG	POS	Total	Original MAC-ELISA Result	Original PRNT Result
1	2.412	24.974	0.049	35.31	3	17	9	1	30	Negative	flavivirus
8	36.011	41.176	0.71	44.053	0	0	0	30	30	Presumptive Positive	flavivirus
7	50.461	48.135	0.944	40.769	0	0	0	30	30	Presumptive Positive	flavivirus
4	4.461	40.829	0.086	40.452	2	9	2	17	30	Presumptive Positive	Zika
3	3.512	37.388	0.07	45.698	5	6	2	17	30	Presumptive Positive	flavivirus
6	39.216	45.048	0.816	56.406	0	0	0	30	30	Presumptive Positive	Zika
2	2.833	36.053	0.057	42.351	5	10	7	8	30	Equivocal	flavivirus
5	16.187	42.542	0.329	51.395	0	0	0	30	30	Presumptive Positive	Zika
Negative control	N/A	N/A	0.021	45.187	N/A	N/A	N/A	N/A	N/A		
Positive Control	39.053	43.335	0.771	46.977	N/A	N/A	N/A	N/A	N/A		
Total	N/A	N/A	N/A	N/A	15	42	20	163	240		

Table 10: Performance Across Authorized Reagent Combinations – InBios conjugate reacted with Vero E6 Antigens

SAMPLE	P/N Mean	P/N CV	OD Mean with Zika Antigen	OD CV with Zika Antigen	INTERPRETATION						
					EQV	INC	NEG	POS	Total	Original MAC-ELISA Result	Original PRNT Result
1	3.394	47.727	0.109	87.857	2	13	6	9	30	Negative	flavivirus
8	35.05	56.338	0.969	71.557	0	0	0	30	30	Presumptive Positive	flavivirus
7	51.109	46.376	1.387	57.851	0	0	0	30	30	Presumptive Positive	flavivirus
4	5.206	47.592	0.153	77.517	2	10	1	17	30	Presumptive Positive	Zika
3	3.387	45.389	0.095	66.749	10	3	4	13	30	Presumptive Positive	flavivirus
6	39.607	50.274	1.072	63.139	0	0	0	30	30	Presumptive Positive	Zika
2	3.675	45.367	0.109	77.337	4	3	6	17	30	Equivocal	flavivirus
5	19.058	54.979	0.582	88.639	0	0	0	30	30	Presumptive Positive	Zika
Negative control	N/A	N/A	0.03	62.156	N/A	N/A	N/A	N/A	N/A		
Positive Control	23.754	59.926	0.61	64.383	N/A	N/A	N/A	N/A	N/A		
Total	N/A	N/A	N/A	N/A	18	29	17	176	240		

Contact

Questions may be directed to reagents2@cdc.gov

References

Johnson AJ, Martin DA, Karabatsos N and Roehrig JT. *Detection of anti-arboviral immunoglobulin G by using a monoclonal antibody-based capture enzyme-linked immunosorbent assay*. J Clin Microbiol 2000; 38: 1827–1831.

Koneman EW, Allen SD, Janda WM, Schreckenberger PC, Winn Jr. WC . (Eds). *Diagnosis of Infections caused by Viruses, Chlamydia, Rickettsia*, Diagnostic Microbiology, 4th Edition, JB Lippicott Co: 956–1074, 1992.

Lanciotti RS, Kosoy OI, Laven JJ, Velez JO, Lambert AJ, Johnson AJ, Stanfield SM, Duffy MR. *Genetic and Serologic Properties of Zika Virus Associated with an Epidemic, Yap State, Micronesia, 2007*. Emerg Infect Dis 2008; 14: 1232–1239.

Monath TP, Nystrom RR, Bailey RE, Calisher CH, and Muth DJ. *Immunoglobulin M antibody capture enzyme-linked immunosorbent assay for diagnosis of St. Louis encephalitis*. J Clin Microbiol 1984; 20: 784–790.

Martin DA, Muth DA, Brown T, Karabatsos N, Roehrig JT. *Standardization of immunoglobulin M capture enzyme-linked immunosorbent assays (MAC-ELISA) for routine diagnosis of arboviral infections*. J Clin Microbiol 2000; 38: 1823–1826.

Rabe IB, Staples JE, Villanueva J, et al. *Interim Guidance for Interpretation of Zika Virus Antibody Test Results*. Morb Mortal Wkly Rep 2016; 65(21): 543–546.

Sharp TM, Fisher M, Munoz-Jordan JL, Paz-Bailey G, Staples JE, Gregory CJ, Waterman SH. *Dengue and Zika Diagnostic Testing for Patients with a Clinically Compatible Illness and Risk for Infection with Both Viruses*. Morb Mortal Wkly Rep 2019; 68(RR1): 1–10.

Tsai TH. *Arboviruses*, In Rose NR, Marcario EC, Fahey JL, Friedman H, and Penn GM, (Eds): *Manual of Clinical Laboratory Immunology*, 4th Edition, American Society for Microbiology: 606–618, 1976.

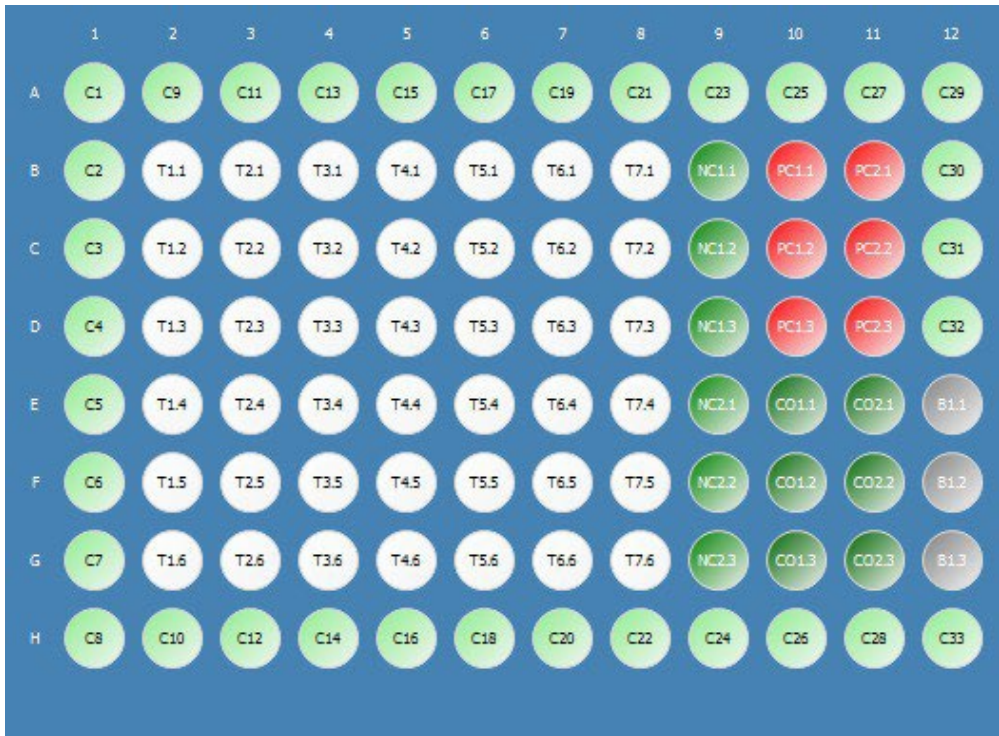
The following Instructions for Use are provided by Dynex Technologies who are solely responsible for the content. These instructions are for use with the CDC Zika MAC ELISA assay on the Dynex Agility® and Dynex DSX® instruments. Any questions regarding the use of these instruments should be directed to Dynex Technologies at 800-288-2354 or customerservice@dynextechnologies.com.

Please note:

Plate layout for the automated systems is different from the layout described for running this assay manually. The following plate layout **must** be used with the Dynex Agility® and the DSX® for the software to read and interpret the samples and controls appropriately. Test samples (T#.#) are run in replicates of 6 and are loaded in a linear manner. In the figure below, test sample #1 is in row 2.

T1.1, T1.2 and T1.3 are tested against viral antigen. T1.4, T1.5 and T1.6 are tested against normal antigen.

Additional test samples, for example, T2 through T7 in the example below, are loaded into rows 3 through 8 respectively. Row 9 can be used to run an eighth sample (T8) once the negative control requirement has been satisfied.



- T1-T7 = Patient specimens run in triplicate
- PC1.x = Positive Control reacted with Zika antigen
- PC2.x = Positive Control reacted with Normal Antigen
- NC1.x = Negative Control reacted with Zika Antigen
- NC2.x = Negative Control reacted with Normal Antigen
- CO1.x = Calibration Control Serum reacted with Zika Antigen
- CO2.x = Calibration Control Serum reacted with Normal Antigen
- B1 = plate blank
- C1 – C33 = empty wells

Appendix A: Dynex Agility Instructions

Agility

CDC Zika MAC-ELISA Instructions for Use

Revision History

Rev	Date	Summary of Revision
0	2016/08/09	Initial Draft
1	2016/08/11	Regulatory comments added
2	2016/10/21	Revised labelling of reagents, and included more details on use of the instrument and performing the CDC Zika MAC-ELISA.
3	2018/04/16	Revised to include Calibration Control Serum
4	2019/09/27	Minor modifications made for clarity and consistency with methods described in instruction for use.

TABLE OF CONTENTS

1. Instrument Start-Up	34
2. Assay Transfer	40
2.1 Transferring from USB device.....	41
3. Assay Verification	41
4. SmartKit Creation	43
4.1 Creating SmartKit Barcode Labels	44
4.2 Printing Labels.....	45
4.3 Stage 1 Assay Fluid Loading	45
4.4 Stage 2 Assay Fluid Loading	47
5. Consumable Loading	48
5.1 Reagent Tips (Dynex Technologies #67920).....	48
5.2 Sample Tips (Dynex Technologies #67910).....	49
5.3 Deep Well Strips (Dynex Technologies #62910).....	50
6. SmartKit Loading	50
7. Sample Loading	50
7.1 Loading Samples Zika Stage 1.....	52
7.2 Loading Samples Zika Stage 2.....	53
8. Creating a Worklist	54
8.1 Worklist Filter Screen	54
8.2 Worklist Edit Screen	55
9. Scheduled Assays	57
10. Zika Assay Stage 1	59
11. Zika Assay Pre-Stage 2.....	60
12. Zika Assay Stage 2.....	61
13. Results	61
13.1 Report Example	61
14. Agility Warnings and Safety Precautions	64
14.1 Warning Labels.....	65

Instrument Start-Up

- Open doors manually with key – ensure all doors are down and arms can move freely. All consumables (reagent tips, SmartKits and deep wells) should be removed daily at the end of each use. Inspect the instrument to ensure all consumables have been removed. Ensure all incubators are empty.
- Start up the instrument.
 - This is done by pressing the start-up button on the lower left hand side of the instrument.
 - Once CTV/Agility/Desktop appears on the welcome screen select “Agility”.
- Initialize the Instrument
 - Select the “initialize all modules” button.
 - Load the wash buffer and clean fluid bottles with the fluids necessary for the assays that are planned to be used for the planned worklist(s). Open the wash bottle drawer (located to the left of the Agility touch screen). Fill container A with wash buffer and container E with distilled water and ensure that the waste container is empty.
- Load reagent tips into an available (indicated by white light) front loading bay before starting any assays, including dispense and aspirate tests. Load a box that is “in-use” on the instrument. If there is no ‘in use’ box, load a new box. Make sure that the reagent tip box barcode is facing towards the inside of instrument. If insufficient reagent tips remain to complete the run (5 Reagent tips per plate + 10 recovery tips) load a second full box of reagent tips.
- **Partial sample tip boxes can only be loaded at this time.** If available, load up to four partial sample tips, deep wells, or mixing vessels in one rack. Make sure all consumable bar codes are facing towards the interior of the instrument so they can be read by the barcode scanner on the transport arm. Seat the loaded drawers by pushing them until they latch in place. The system will then determine the available consumables. Let the system prompt for any subsequent consumables that need to be loaded.
- Perform the start of day washer maintenance to ensure correct operation of the washer.
- Run the dispense test
 - Select the “SmartKit Tools” button on the left hand of the home screen.

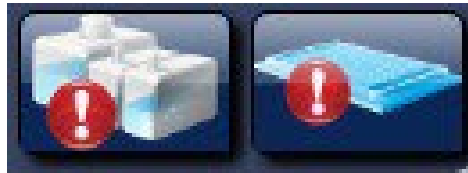


- Select the “Maintenance Tests” button on the left.

- Select the “Maintenance Tests” button on the left.



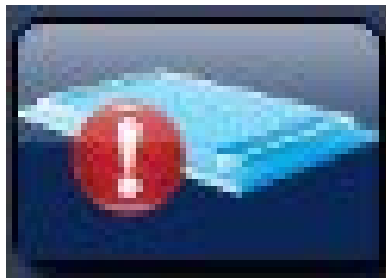
- Select the “Reset Wash Bottle” button.
- Select the “Reset Wash Bottle” button.
- Select the “Wash Dispense Test” button.
- The Agility will schedule a worklist for the Wash Dispense Test. You will hear a sound alert by the Agility that will also show on the top right hand of the screen.



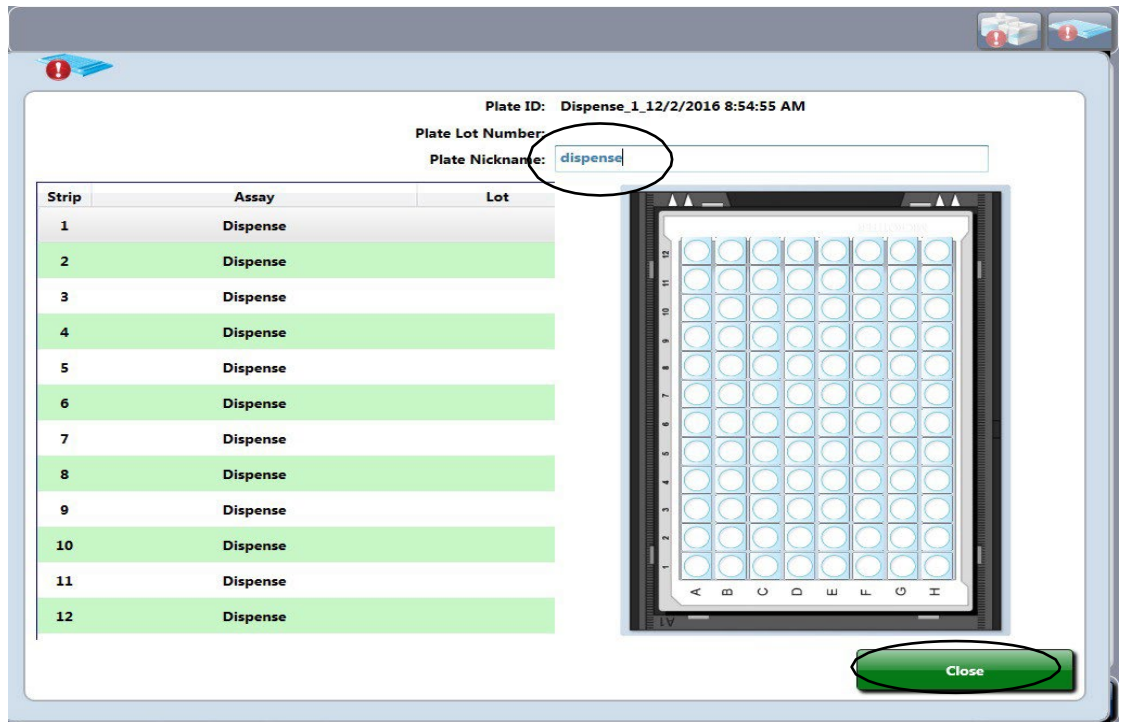
- Load the wash buffer by selecting the “Wash Bottle” button alert.



- From the wash buffer list, select the “Wash Buffer” button and assign to bottle A by tapping on it.
- Select the “clean fluid” button and assign to bottle E by tapping on it.
- Select the “Done” button.
- Select the “Plate Status” button alert.



- The following screen will appear



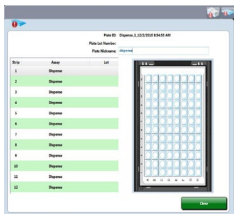
- Type “dispense” in the plate nickname and select “Close”.
- Place a clean non-coated 96-well plate into a plate frame and load into the plate slot that has a white light on. Load the plate with the A1 corner in position marked A1 on the plate carrier with the arrows on the plate carrier facing the inside of the instrument.
- The Agility will now take the plate and perform the dispense test. Once the plate is released from the Agility, check to make sure all the wells are evenly filled.
- Run the aspirate test
 - Select the “Dashboard” button at the bottom of the screen.



- Select the “Home Screen” button



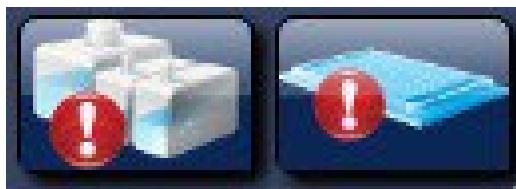
- Select the “SmartKit Tools” button on the left hand of the home screen.



- Select the “Maintenance Tests” button on the left.



- Select the “Reset Wash Bottle” button.
- Select the “Wash Aspirate Test” button.
- You will hear a sound alert by the Agility that will also show on the top right hand of the screen.



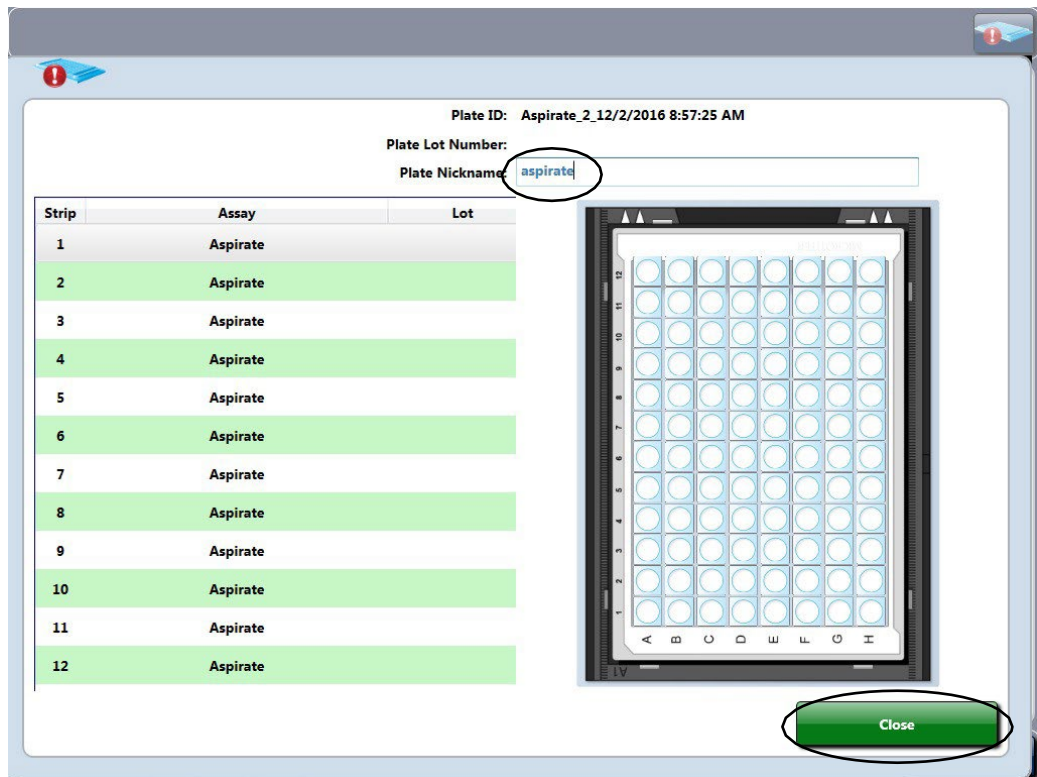
- Load the wash buffer by selecting the “wash bottle” button alert.
 - From the wash buffer list select the “wash buffer” button and assign to bottle A by tapping on it.
 - Select the “clean fluid” button and assign to bottle E by tapping on it.
 - Select the “Done” button.



- Tap on the “plate status” button alert.



- The following screen will appear



- Type “aspirate” in the plate nickname and select “Close”.
- Load the same plate that was used for the Wash Dispense Test in the slot that has a white light on. The Agility will now take the plate and perform the aspirate test. Once the plate is released from the Agility, verify that all wells have less

than a few droplets of fluid remaining in them and that there are no scratches from the washer on the bottom of the wells.

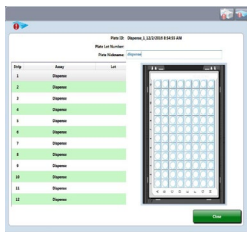
- Select the “Dashboard” button.



- Select the “Home Screen” button



- Select the “SmartKit Tools” button.



- Select the “Maintenance Tests” button on the left.



- Select the “Reset Wash Bottle” button.

- Go back to the home screen by selecting the “Dashboard” button and then the “Home Screen” button.

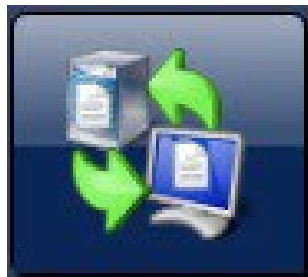


2. Assay Transfer

The assay transfer is only done the first time the assay is performed or when it is modified. Proceed to step 4 if this step was done previously. The two Zika assay files are transferred to the installed Agility system by file transfer from a USB storage device. To reach the Assay transfer screen from the main dashboard screen, select the “Home screen” button to get back to the instrument initial self-test results screen.



From the initial screen menu, select the “Transfer Assay” button.




2.1 Transferring From USB Device

- Insert the USB with the Zika assay files onto the Agility.
- The screen will display the list of assays found on the USB Device. Note by default that both Stage 1 and Stage 2 Zika assays will be selected. Select the desired assay files by clicking the applicable tick box next to the file filter.
- When the selection is complete, select the transfer files button to transfer the selected assays.



3. Assay Verification

You may proceed to step 4 if this step was previously performed.

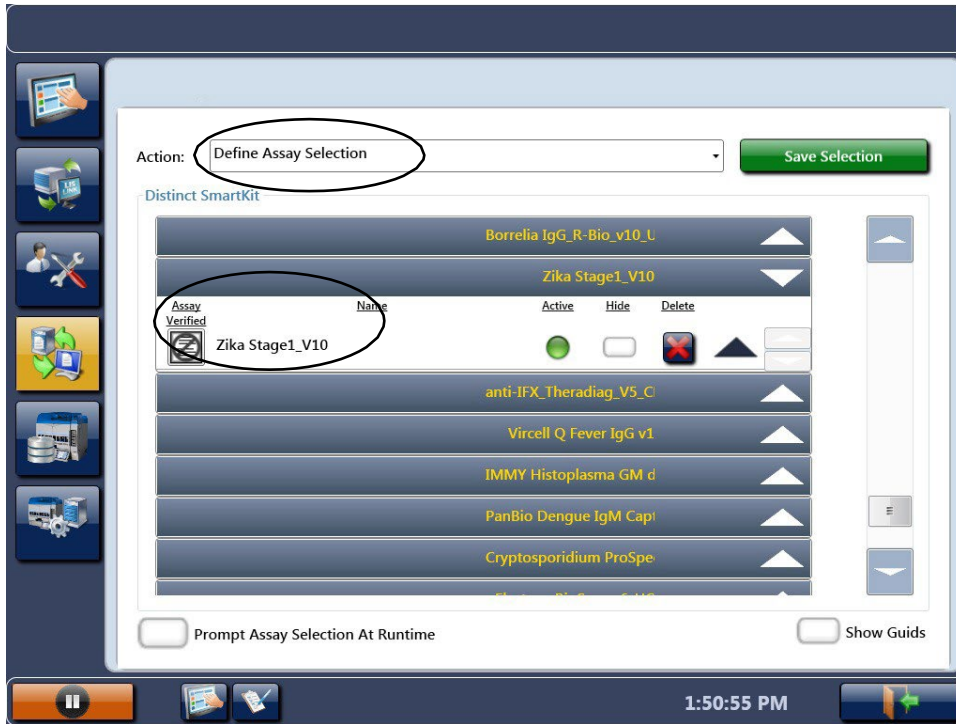
	The Dynex Agility system is an open system so it is the responsibility of each laboratory to validate any assay programs for their application and target population. All results reported are the responsibility of the reporting Laboratory
	The Agility system will not be able to transmit result to an export file or LIMS system until the laboratory selects [Assay verified] on the Agility System
	All Assay reports will state the assay has not been verified until this action is completed

To declare an assay verified, the laboratory should select the “Define assay selection” option in the “Action” drop down box of the Assay transfer screen detailed in section 2.

NOTE: Data comparing the Dynex Agility System to an approved manual method (Zika MAC-ELISA) has been provided to FDA by CDC. Individual jurisdictions may require additional testing to verify this assay.

Selecting the “define assay selection” will list all the installed assays on the system. Expanding the assay bar will give options for the assay and will show if the assay is verified.


To accept the assay as verified select the “assay verified” symbol on the left of the assay detail, this will then display the assay verification dialogue.



Entering a date, name and title will activate the lower left “Assay Verified” button. By selecting “Assay Verified”, the assay will be declared as a verified assay protocol. This will allow results to be transmitted to an output file and LIMS as well as removing the unverified warning from any Agility reports.

Assay Acceptance - Zika Stage1_V10

Please enter the date, name, and title of the person authorized to verify assay 'Zika Stage1_V10'.

Date: 

Name:

Title:

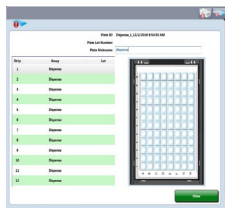
I acknowledge that Agility© is an “open system” and it is the laboratory’s sole responsibility to determine this assay’s suitability for a particular application, including any clinical application, and verify the product for that use in compliance with all applicable legal requirements and policies.

4. SmartKit Creation

The SmartKit label creator is available within the Agility instrument software. This application is used for the creation of Barcode labels for Silver / Bronze SmartKits. These are barcodes that are printed for assay reagent kits at the site of use. Each barcode label created within the laboratory will have a unique Smartkit number and start with the prefix DYNXXXXXXX. Gold SmartKits supplied by other assay kit manufacturers will have their own unique 3 letter code so they do not duplicate with any labels created at a laboratory site.

4.1 Creating Smartkit Barcode Labels

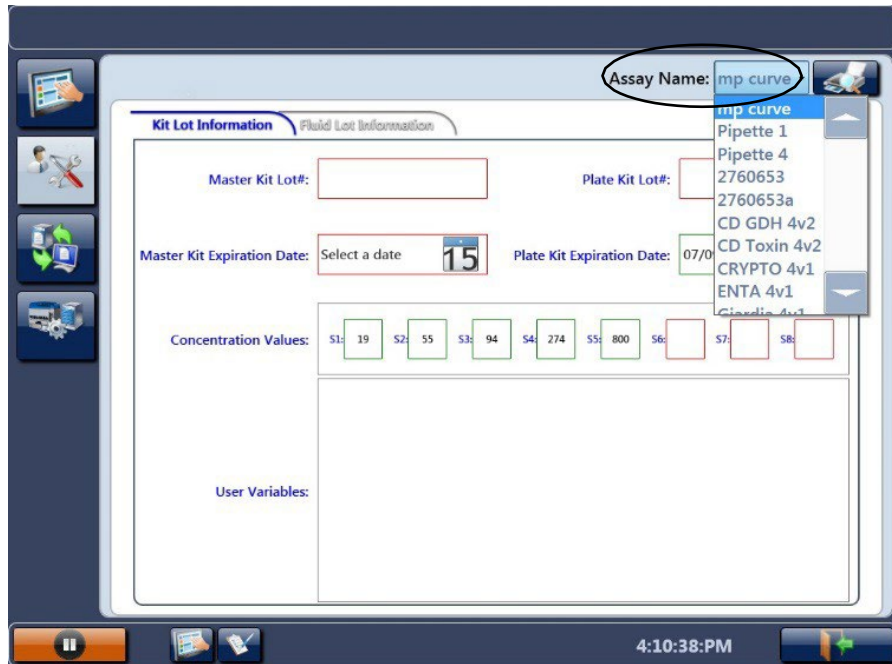
- Select the “SmartKit Tools” button on the left hand of the home screen.



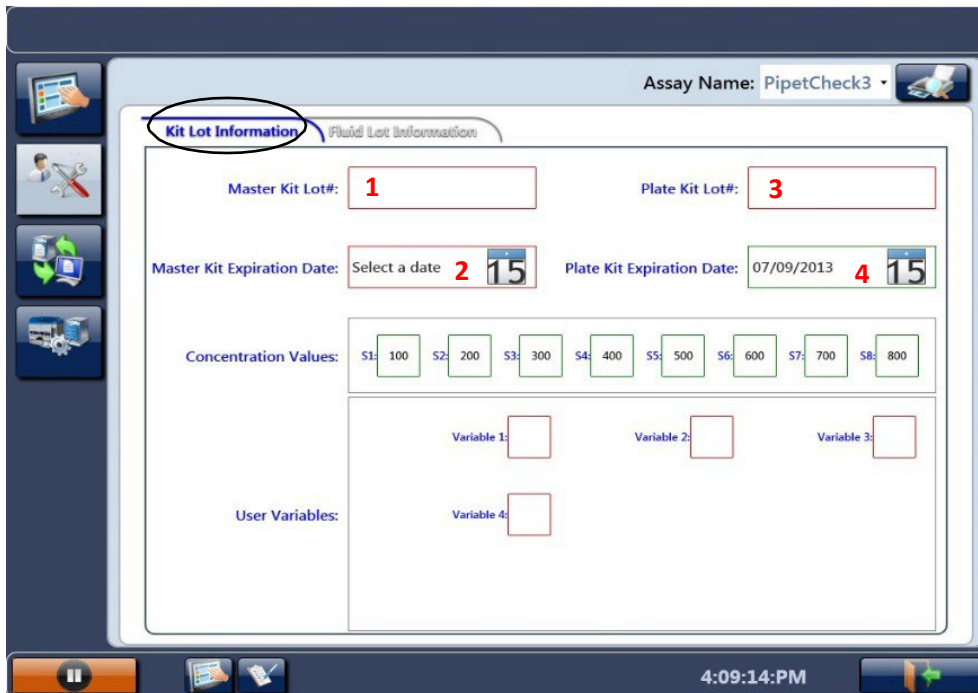
- Select the “SmartKit Creation” button.



- Assay Name
To create a label, you first need to select the assay for which the SmartKit will be used. Select the “[**assay name**]” from the drop down list of all the transferred assays that the Agility Instrument holds.



- Kit Lot Information
On the initial “Kit Lot Information” tab, enter the main kit lot information.



4.1.1 Master kit Lot # (1)

4.1.1.1 There is no Master kit Lot# for the Zika MAC-ELISA. However, you may want to store the IgM capture antibody lot number here. Leave this box blank if desired.

4.1.1.2 Master Kit Expiration Date (2)

No expiration date is necessary. If entering the IgM capture antibody information in box 1, the corresponding expiration date can be placed here. Leave this box blank if desired.

4.1.1.3 Plate kit Lot # (3)

Enter the date plates were sensitized with capture antibody or a plate lot #. This will be displayed on the system and the report.

4.1.1.4 Plate Kit Expiration Date (4)

Plates sensitized with capture antibody are good for 1 week when left refrigerated at 4°C. Enter the date 1 week post-sensitization of plates. This will be displayed on the system and the report.

4.2 Printing Labels

Printing of SmartKit barcode labels is done using the Agility connected label printer. Once the assay is selected and the Lot information has been entered, the user can print the label by selecting the print button at the top right hand corner of the screen.

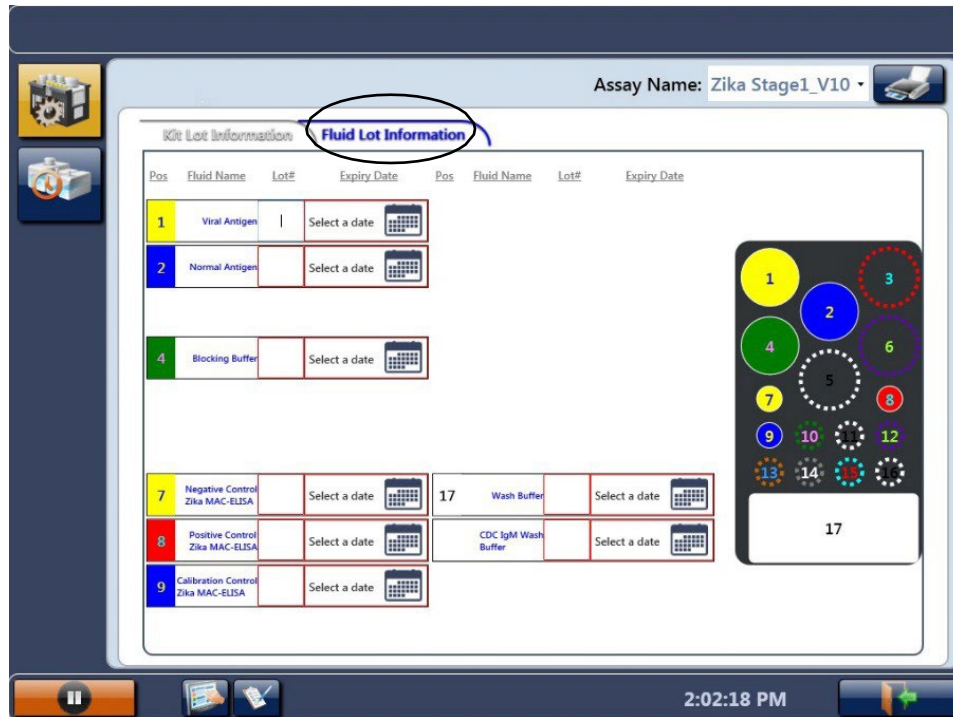


If multiple labels are needed for the same lot information, additional labels can be printed by selecting the print button multiple times.

4.3 Preparation of SmartKits for Zika MAC-ELISA (Stage 1 Assay Fluid Loading)

NOTE: Skip this step on the day that the Zika MAC-ELISA stage 2 will be performed.

The Zika Stage 1 Assay Fluid locations can be viewed by displaying the Fluid Lot Information tab in the Smartkit Creator section of the Agility software.



Load the following volumes of fluid in the displayed locations.

Location	Fluid Name	Volume
1	Zika Vero E6 Tissue Culture Antigen or Zika COS-1 Recombinant Antigen	2.5 mL
2	Normal Vero E6 Antigen or Normal Control COS-1 Recombinant Antigen	2.5 mL
4	Blocking buffer (5% Nonfat Dry Milk)	13 ml
7	Negative Control Serum	400 µL
8	Positive Control Serum or Flavivirus IgM positive control	400 µl
17	Wash Buffer	13 mL

The Smartkit is ready for use after the SmartKit fluids containing the correct volume have been loaded into the correct bottle locations and the Smartkit has been labelled with the correctly printed Barcode label.

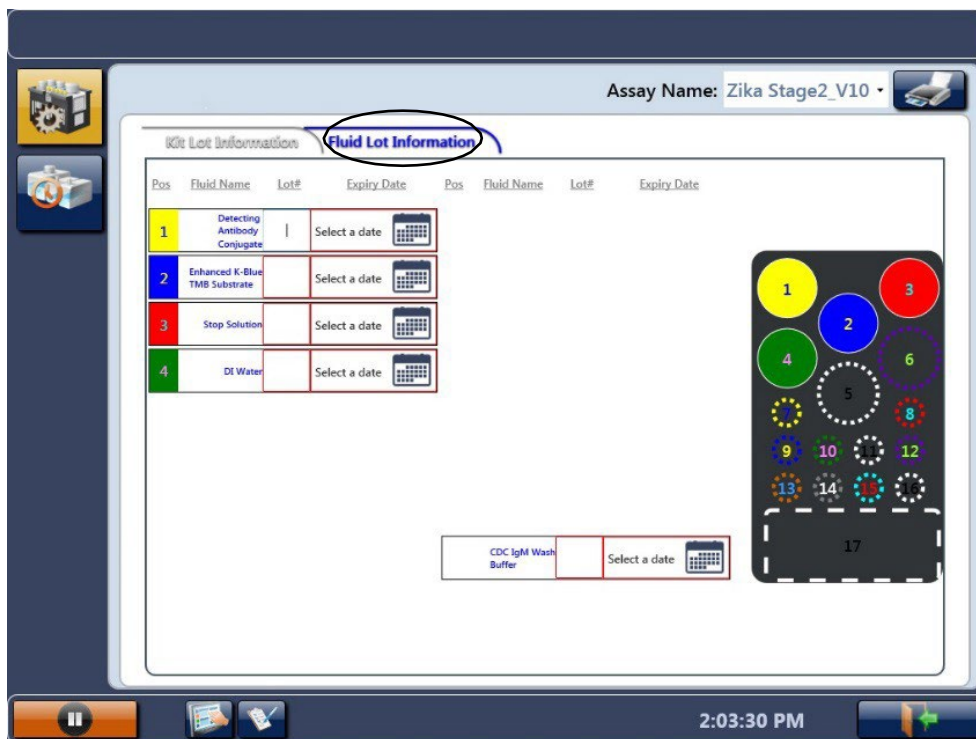
Select the “Dashboard” button then the “Home Screen” button to go back to the home screen.



4.4 Preparation of SmartKits for Zika MAC-ELISA (Stage 2 Assay Fluid Loading)

NOTE: Perform this step on the day that the Zika MAC-ELISA stage 2 will be performed.

The Zika Stage 2 Assay Fluid locations can be viewed by displaying the fluid lot information tab of the Smartkit Creator section of the Agility software.



Load the Following volumes of fluid in the displayed locations.

Location	Fluid Name	Volume
1	Detecting Antibody Conjugate (Horseradish peroxidase conjugated monoclonal antibody 6B6C-1)	4 mL
2	Enhanced K-Blue TMB Substrate	5.5 mL
3	Stop Solution (1N H ₂ SO ₄)	4 mL
4	DI Water	11 mL

The Smartkit is ready for use after the SmartKit fluids containing the correct volume have been loaded into the correct bottle locations and the Smartkit has been labelled with the correctly printed Barcode label.

Select the “Dashboard” button then the “Home Screen” button to go back to the home screen.



5. Consumable Loading

Consumable items are required to perform the Zika MAC-ELISA assay. Consumables can be preloaded prior to scheduling a worklist or as requested once a worklist is scheduled. Preloading is recommended because the user is then able to load partial tip boxes. System alert requests for consumable loading requires a complete new box of consumables loaded in the exact location requested by the alert.

5.1 Reagent Tips (Dynex Technologies # 67920)

Reagent tip racks of 98 tips are loaded in a SmartKit holder in an available SmartKit load position through the front doors of the instrument.



The lid of a new box is removed and fitted to the bottom of the tip rack then loaded in a SmartKit holder.

- Partial boxes of reagent tips need to be loaded prior to scheduling a worklist.
- If a Reagent tip is requested by an instrument load request after scheduling, the Reagent tip box must be a new rack.
- If a reagent tip rack is requested because the currently loaded rack is running out, a new rack needs to be loaded in the flashing white load position indicated by the system request.

5.2 Sample Tips (Dynex Technologies #67910)

Sample tips are shipped in a sleeve of 8 racks and each rack holds 112 tips. Each rack has a unique 2D barcode which the instrument reads to identify the rack as sample tips. The instrument maintains a count of tips used when the rack is unloaded before all tips are used. The Barcode also details the Lot number of tips used. The sample tips have been made to fit a narrower spigot than the Dynex DSX/DS2 to enable the spigot and tip to go into a sample tube and reach the bottom of a 100 mm high sample tube.



- Partial tip boxes may be loaded prior to scheduling a worklist. Typically there will be 2 partially used tip boxes from the end of previous days run. These should be loaded in Drawer 1 position 1 so they will start being used first. Complete tip boxes must be used in Drawer 1 positions 2-4.
- If sample tips are not preloaded prior to scheduling, the system will request sample tips be loaded and provide a location on the drawer. In this case, a new full box of tips will need to be loaded and must be in the location displayed on the individual racks.
- Any additional sample tips requested to be loaded by a system alert message will need to be new full racks and loaded in requested locations.

5.3 Deep well Strips (Dynex Technologies # 62910)

The deep well holders contain 12 deep well strips and are used for performing sample pre-dilution operations. Deep well strips are shipped in boxes of 250 and are required to be manually loaded into the holder for loading on the system. The holder has a 2D barcode label to identify to the instrument that it is a deep well holder. Because it is a refillable item the barcode is not uniquely identified. It is necessary for the user to ensure that 12 unused deep well strips are loaded in the holder. Each deep well has a capacity to hold 2 mL of dilution fluid.



- If preloading consumables, it is recommended that deep well holders be loaded in the highest drawer possible.
- If not loaded before scheduling, a consumable load alert will request which items to load and in which location.

6. SmartKit Loading

After SmartKits are created (with fluids loaded and the barcode label attached), the SmartKits can be loaded on the system like any other Smartkit. Load SmartKits in any available SmartKit position at the front of the instrument where white lights are illuminated below the SmartKit Bay. Once loaded, do not remove unless the position displays a flashing red error status light. Once loaded, the status light will change to orange. This indicates the instrument is waiting to read the barcode. Once the SmartKit Barcode has been read, the light will change to blue worklists may be created. After being read, the SmartKit may be moved to upper door positions so that more SmartKits can be loaded in the lower positions. This will be signified by the SmartKit being moved and the original position status light being set back to white.

7. Sample Loading

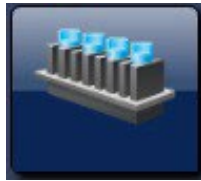
- To reach the sample loading page from the home screen select the “Dashboard” button



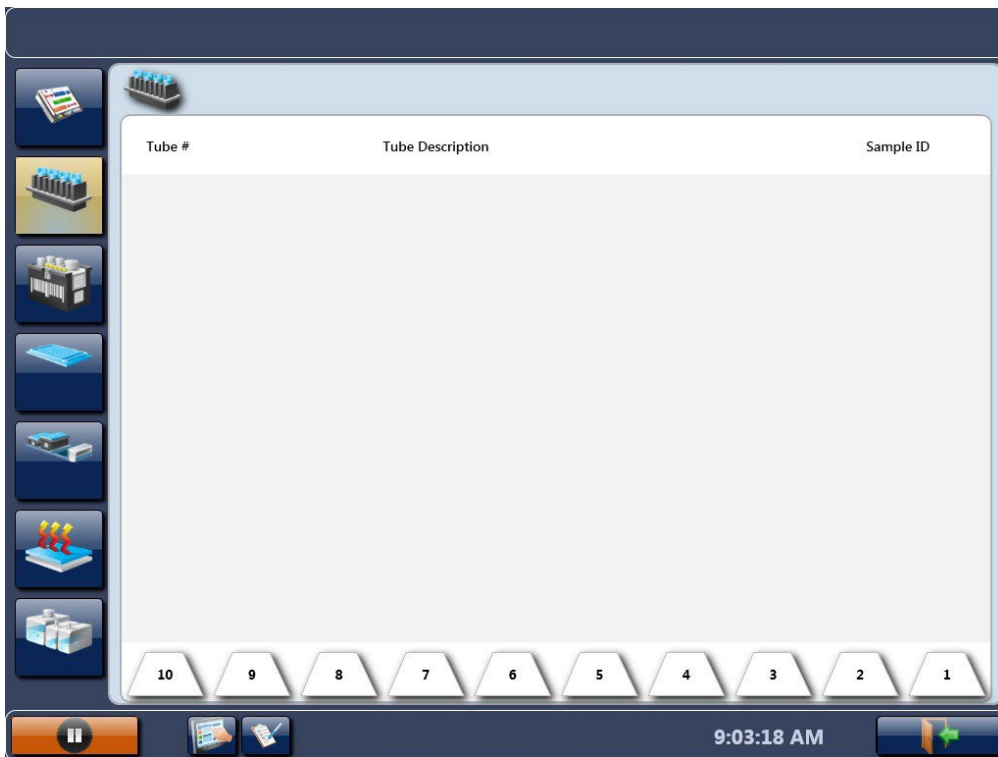
then select the “Timeline” button.



- Select the “Samples” button.



- A screen will appear with the numbers for each barcode rack at the bottom.

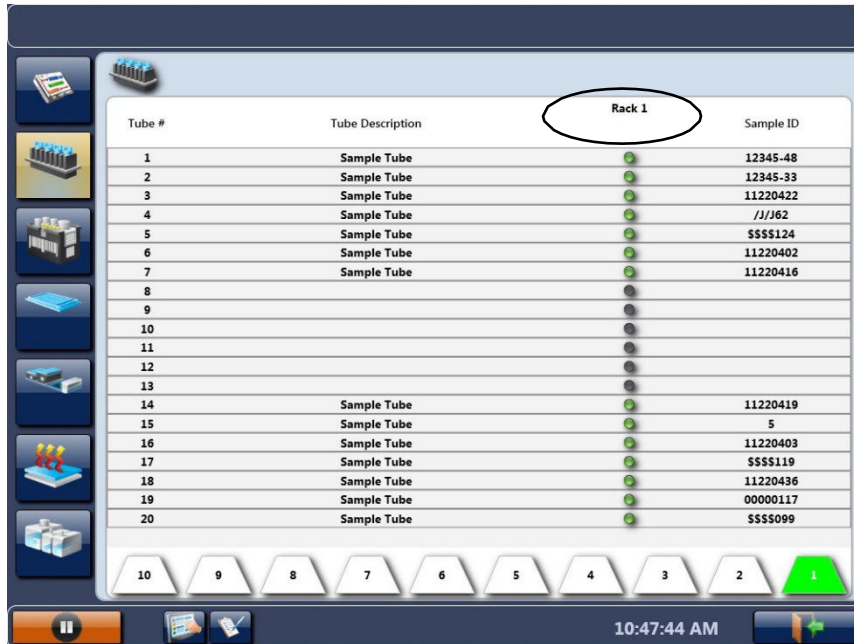


- The CDC Zika MAC-ELISA is capable of performing tests on 8 samples per plate. Since each sample rack holds 20 samples, it is recommended to load 8 samples in rack locations 1-8 and then another 8 in locations 13-20. This will make it easier to identify and assign the samples to worklists.

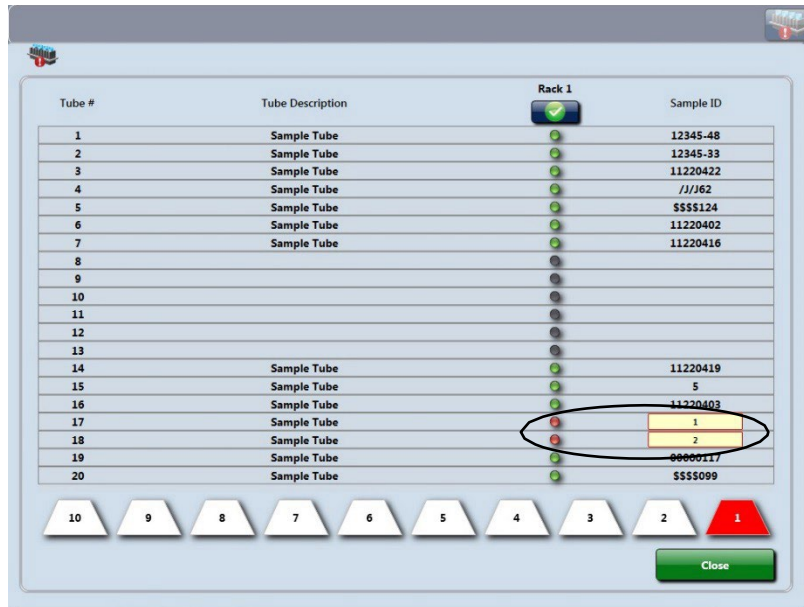
7.1 Loading Samples Zika Stage 1

Stage 1 of the Zika assay pipettes and dilutes the samples on the plate. Samples are loaded and sample ID's assigned to the respective sample either by scanning barcodes on the sample tubes or entering the sample ID's manually.

Place the sample tubes in the rack with the tube barcode facing the same side as the rack barcode. Touch "rack 1" on the screen and insert the tube rack into the Agility with a smooth and continuous movement to ensure that all barcodes are read. Sample barcodes that are read correctly will display a solid green dot next to their sample ID.



If a red dot appears next to the sample ID, reposition the sample tube and rescan the samples.



If the sample tube barcode is still not detected by the Agility, enter the sample ID manually. Samples that were entered manually will appear with a hatched green dot.

Select the “Dashboard” button at the bottom of the screen.



7.2 Loading Samples Zika Stage 2



Sample ID locations MUST match the locations loaded for stage 1

Although Stage 2 of the Zika assay does not pipette samples, the Agility system must have sample tubes loaded to create a worklist. The sample ID’s are also used to report the results. Because this assay requires the plate to be removed overnight, the sample ID locations MUST match the locations loaded for stage 1. This is necessary to ensure an incorrect result is not reported for the sample. If barcodes are not being used to enter sample ID’s for the 2nd stage and manual entry is being used, then it is not necessary to load samples in the same locations as they were loaded in stage 1. However, the correct

number of blank tubes must be loaded in the racks so that the sample ID's can be assigned to the correct sample locations as were manually entered.

8. Creating a Worklist

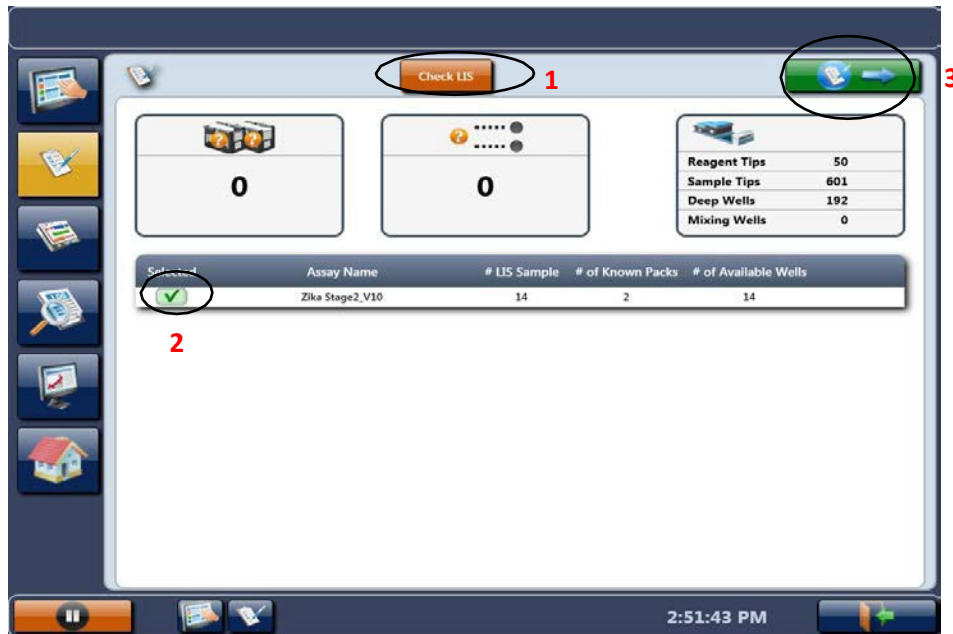
After the Agility system has SmartKits and samples loaded on the system, a worklist can be created. Select the "Create Worklist" button from left hand menu or lower task bar.



8.1 Worklist Filter Screen

The Worklist Filter screen shows the assays that can be run from the loaded Smartkits and the number of samples that can be tested with the number of Smartkits loaded.

If the Agility is being used in conjunction with an LIS (Laboratory Information System), users should select "Check LIS" (1).



When list is acceptable, select the Zika stage 1 assay (2), then select the green arrow button (3) at top right of the screen to continue to the "Worklist Edit" screen.

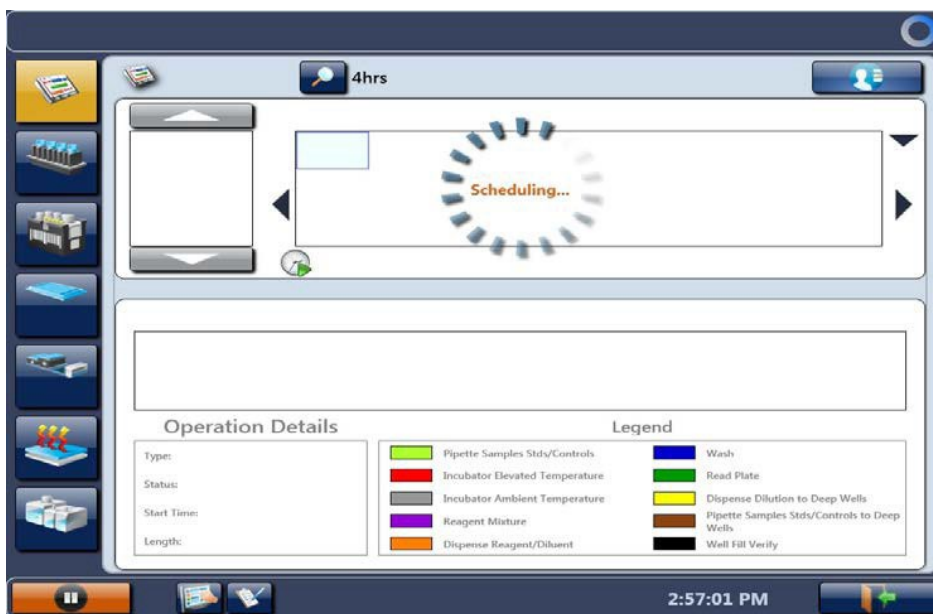
8.2 Worklist Edit screen

The Worklist edit screen displays the sample racks and allows selection of the assay protocol for each sample.

Select samples to run in the assay column. **Only select the samples that will be processed on the first plate at this time.** If the Agility is being used in conjunction with an LIS, users should click "Select LIS". The samples that have been submitted to the LIS to be processed will be recognized by the instrument and appear with an asterisk on the right. Make sure that only samples from the plate being loaded are selected. Deselect any samples from other plates if they are check marked.

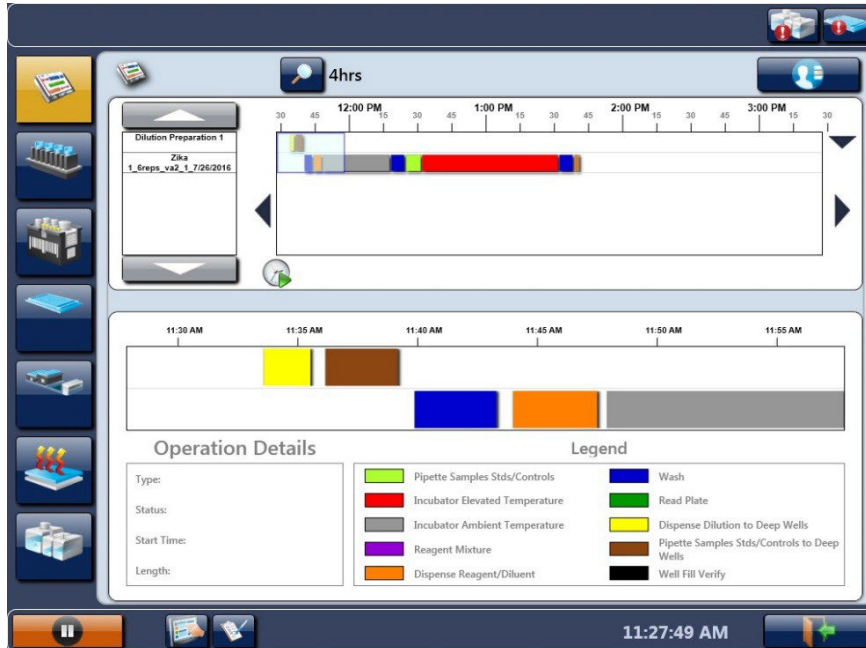


If multiple racks of samples are loaded, these can be viewed by selecting the rack buttons 1-10 along the bottom of the screen. Once the samples are selected, click the green arrow button at top right of the screen to schedule the worklist.

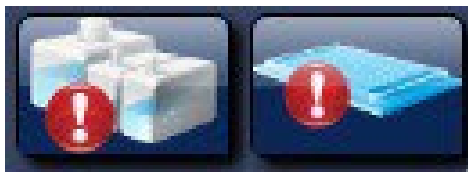


9. Scheduled Assays

After the worklist has been edited and the green button selected, the instrument will calculate and display a timeline.



- Once the assays are scheduled, alerts will appear along the top of the screen containing prompts to perform required actions.



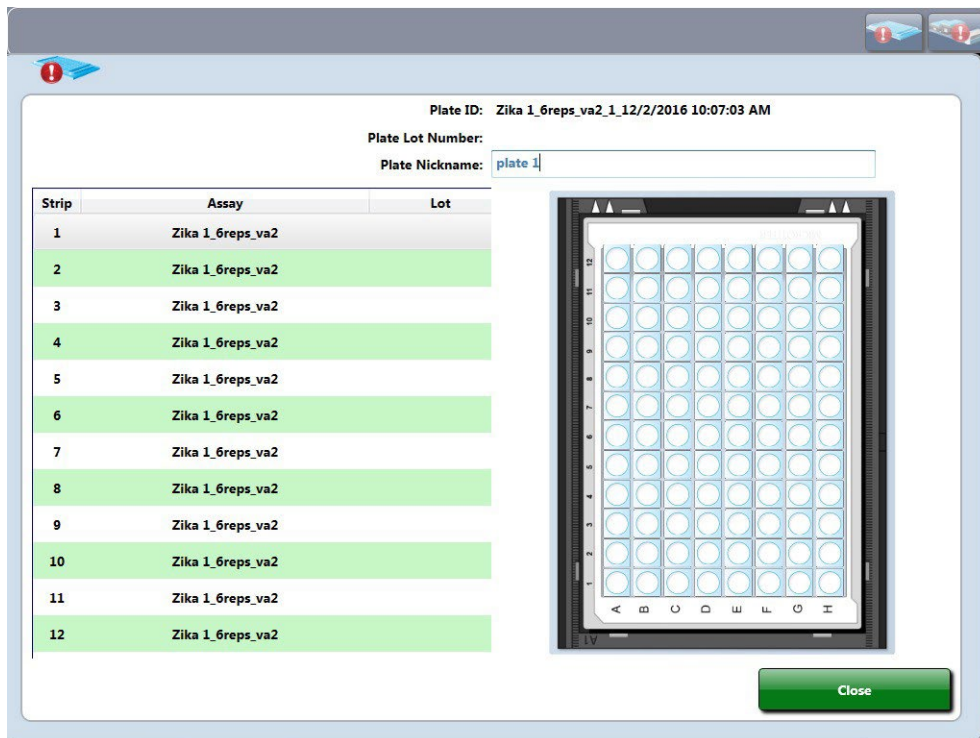
- Load the wash buffer by selecting the “Wash Bottle” button alert.



- From the wash buffer list select the “Wash Buffer” button and assign to bottle **A** by tapping on it.
- Select the “Clean Fluid” button and assign to bottle **E** by tapping on it.
- Select the “Done” button.
- Tap on the “Plate Status” button alert.

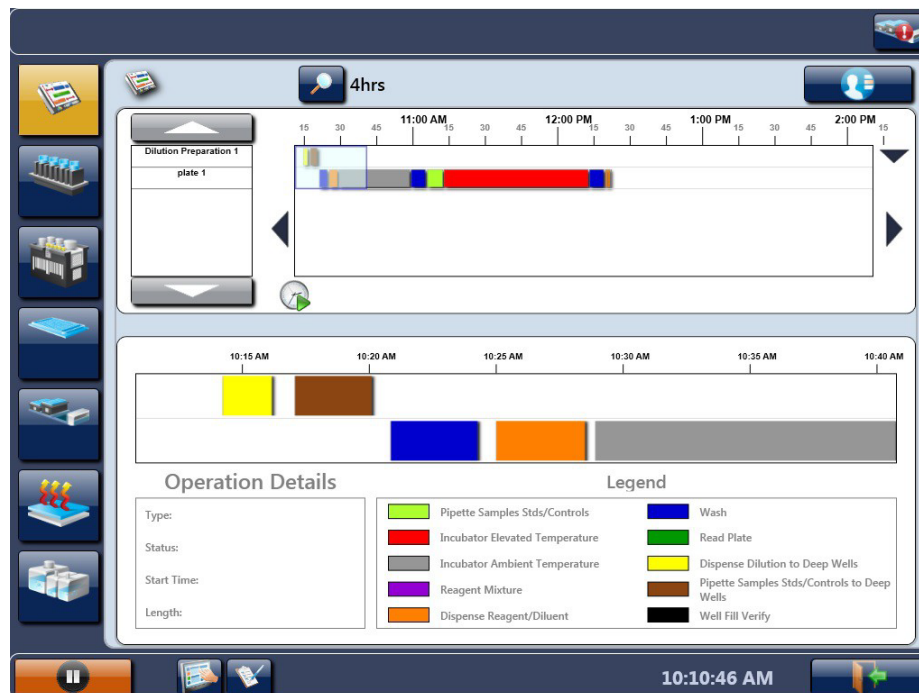


- The following screen will appear



- Enter the plate name and select “Close”. **Do not load the plate without entering the plate name** or it will not be recorded. Load any consumables if requested. Once these requests are satisfied, the instrument will perform the steps of the programmed assays.

- The following screen will appear to show that the assay has been scheduled for the plate entered.



- Once the first plate has been scheduled, you may continue to schedule the remaining plates one by one to avoid sample mislabeling. Repeat steps 7 and 8 for each plate to be scheduled.

Warning: If all of the plates are loaded at once, the Agility will process the plates randomly and not necessarily in the order the plates were loaded. This could potentially cause samples to be mislabeled.

10. Zika MAC-ELISA Stage 1 Steps

(Stage 1 and 2 steps are performed by the Agility Instrument after scheduling of the plate)

NOTE: Plates must be manually coated with goat anti-human IgM and incubated overnight prior to transferring to an automated system. See the Zika MAC-ELISA Assay procedure (p. 11) COATING THE PLATES

When the plates are scheduled on the timeline, the following plate processes are performed for Zika Stage 1 by the Agility instrument.

- Aspirates the contents of the well
- Dispenses 200 µL of Blocking Buffer to inner 60 wells of plate
- 30 minute ambient incubation
- Washes plate with 300 µL CDC IgM Wash Buffer x 5 cycles with final aspirate
- Pipettes samples (diluted 1:400 with wash buffer) to the 7 or 8 sample wells (6 replicates).
- Pipettes pre-diluted Zika Positive Control to PC1 (3 replicates) and PC2 (3 replicates) wells.
- Pipettes pre-diluted Negative Control to NC1 (3 replicates) and NC2 (3 replicates) wells.
NOTE: controls are loaded in SmartKit pre-diluted because the dilution factor for the controls may change from lot-to-lot.
- Incubates at 37°C for 60 minutes
- Washes with 300 µL CDC IgM Wash Buffer x 5 cycles with final aspirate
- Dispenses 50 µL of Viral Antigen to first 3 replicates of all samples and all 3 replicates of PC1 and NC1 wells.
- Dispenses 50 µL of Normal Antigen to last 3 replicates of all samples and all 3 replicates of PC2 and NC2 wells.
- Reads plate at 405 nm.
NOTE: This step is not required but will provide a read report that documents which sample ID's have been pipetted to specific wells on the plate. This is beneficial since the plate needs to be removed for an overnight incubation.

11. Zika MAC-ELISA pre-Stage 2 requirements

- Perform step 1 (Instrument Start-Up) prior to starting Zika Assay Stage 2.
- Perform steps 2 (Assay Transfer) and 3 (Assay Verification). This only needs to be done the first time Zika Assay Stage 2 is performed or after any modifications.
- Perform step 4 (SmartKit Creation). After 4.3 (Printing Labels), go to 4.5 (Preparation of SmartKits for Zika MAC-ELISA; Stage 2 Assay Fluid Loading).
- Perform step 5 (Consumable Loading). Only 5.1 is required.
- Perform step 6 (SmartKit Loading).
- Perform step 7 using the sample loading instruction in 7.2.
- Perform step 8 and make sure that plates are scheduled one by one in the same order as the previous day.
- Perform step 9.

12. Zika MAC-ELISA Stage 2 steps

- Wash plate with 300 µL CDC IgM Wash Buffer x 5 cycles with final aspirate
- Dispense 150 µL of DI Water to all outer wells of plate except blank wells E12, F12, G12
- Dispense 50 µL of Detection Antibody Conjugate to inner 60 wells of plate
- Incubate at 37°C for 60 minutes
- Wash plate with 300 µL CDC IgM Wash Buffer x 5 cycles with final aspirate
- Dispense 150 µL of DI Water to all outer wells of plate except blank wells E12, F12, G12
- Dispense 75 µL of Enhanced K-Blue TMB Substrate to the inner 60 wells of plate
- Incubate for 10 minutes at ambient temperature.
- Dispense 50 µL of Stop Solution to the inner 60 wells of plate and the blank wells E12, F12, G12
- Incubate for 1 minute at ambient temperature
- Read Plate at 450 nm
- Raw QC - PC1/CO1 \geq 2
- Raw QC – NC1/CO1 $<$ 2
- Spreadsheet calculation Row B- Average of first 3 replicates of each sample divided by the average of CO1 wells. (P/N)
- Threshold-determination of sample calculation result:
Negative samples = less than 2
Positive sample = greater than or equal to 3
Equivocal = between 2 and 3

NOTE: For interpretation/reporting of results from this assay, refer to the appropriate section of the EUA.

13. Results

When the plate for Stage 2 has been completed, results are saved to the Agility Database automatically. Reports can be saved as a pdf or printed.

13.1 Report Example

The report will contain the details for the Smartkit used to process the plate. It will also contain any lot information for reagents that may have been entered when creating the Barcode label for the Smartkit.

The report will also detail the validity evaluation (Raw QC) using the positive and negative control and indicate if the plate has passed or failed.

NOTE: See example of report on next page.

Name: Lab Name
 Address 1: 1234 Circle Drive
 Address 2: Suite 230
 Phone: 555-555-5555
 Fax: 555-555-5555

Start Time: 4:33 PM 10/24/2017
 End Time: 4:34 PM 10/24/2017
 Plate Processed Time: 4:34 PM 10/24/2017
 Operator: Unknown (TBD)
 Serial Number: Unknown

TEST NO.: Unknown (TBD)
 TEST NAME: zika read 2
 PLATE: zika read 2_1_10/24/2017 4:34:07 PM[S/N:Unknown]
 Plate Nickname:

W/L MODE: Single
 TEST FILTER: 450 nm.
 REF FILTER: N/A

SmartKit ID: DYN0000702
 Master Kit Lot: 1
 Plate Lot:

Expiration Date: 12/30/2017
 Expiration Date:

OVER Threshold: 3.5
 Over Replacement: 3.6

Kit Lot Info

Fluid Name	Fluid Type	Lot	Expiration
Blue TMB Substrate	Reagent		1/1/0001
CDC IgM Wash Buffer	Wash		1/1/0001
DI Water	Reagent		1/1/0001
HRP Conjugated Monoconal Antibody 1	Reagent		1/1/0001
Stop Solution	Reagent		1/1/0001

ASSAY EQUATIONS

Operation	Equation	Valuation	Result
Raw QC	PC1/CO1>2	9.006>2.000	Passed
Threshold Equaiton	POS	3	
Threshold Equaiton	NEG	2	

The report also shows a plate summary matrix with the results of each sample calculation displayed in the first replicate of each sample location on the plate. Within the calculated well location, it will display

- the Sample ID,
- the blanked OD value,
- The average of the sample replicates tested with viral Antigen / the average of the negative wells run with viral antigen (P/N Calculation Row B).
- The interpretation of the result (<2=Negative, ≥3=Positive and anything in between as equivocal).

Plate Summary Matrix													
	1	2	3	4	5	6	7	8	9	10	11	12	
A	C1	C9	C11	C13	C15	C17	C19	C21	C23	C25	C27	C29	A
sp	0.001	-0.001	0.002	0.009	0.005	0.005	0.000	-0.002	0.002	0.002	-0.001	0.015	sp
th	####	####	####	####	####	####	####	####	####	####	####	####	th
	C1	C9	C11	C13	C15	C17	C19	C21	C23	C25	C27	C29	
B	C2	1	2	3	4	5	6	7	NC1.1	PC1.1	PC2.1	C30	B
sp	-0.002	-0.045	0.299	-0.044	0.149	1.384	0.463	-0.048	-0.045	1.404	-0.046	-0.002	sp
th	####	-0.283	1.330	-0.278	0.838	8.489	2.971	-0.297	-0.279	9.006	####	####	th
	C2	NEG	NEG	NEG	NEG	POS	EQUIV	NEG	NC1	PC1	PC2	C30	
C	C3	1	2	3	4	5	6	7	NC1.2	PC1.2	PC2.2	C31	C
sp	0.001	-0.044	0.144	-0.045	0.120	1.425	0.479	-0.047	-0.045	1.471	-0.047	-0.004	sp
th	####	####	####	####	####	####	####	####	####	####	####	####	th
	C3	#	#	#	#	#	#	#	NC1	PC1	PC2	C31	
D	C4	1	2	3	4	5	6	7	NC1.3	PC1.3	PC2.3	C32	D
sp	-0.005	-0.046	0.192	-0.044	0.131	1.237	0.474	-0.047	-0.043	1.418	-0.048	-0.001	sp
th	####	####	####	####	####	####	####	####	####	####	####	####	th
	C4	#	#	#	#	#	#	#	NC1	PC1	PC2	C32	
E	C5	1	2	3	4	5	6	7	NC2.1	CO1.1	CO2.1	B1.1	E
sp	-0.002	-0.049	-0.055	-0.052	-0.047	-0.047	-0.046	-0.048	-0.040	0.128	-0.048	0.097	sp
th	####	####	####	####	####	####	####	####	####	####	####	####	th
	C5	#	#	#	#	#	#	#	NC2	CO1	CO2	B1	
F	C6	1	2	3	4	5	6	7	NC2.2	CO1.2	CO2.2	B1.2	F
sp	-0.007	-0.050	-0.045	-0.050	-0.046	-0.049	-0.050	-0.048	-0.042	0.206	-0.050	0.096	sp
th	####	####	####	####	####	####	####	####	####	####	####	####	th
	C6	#	#	#	#	#	#	#	NC2	CO1	CO2	B1	
G	C7	1	2	3	4	5	6	7	NC2.3	CO1.3	CO2.3	B1.3	G
sp	-0.001	-0.048	-0.047	-0.047	-0.045	-0.047	-0.046	-0.048	-0.042	0.142	-0.050	0.092	sp
th	####	####	####	####	####	####	####	####	####	####	####	####	th
	C7	#	#	#	#	#	#	#	NC2	CO1	CO2	B1	
H	C8	C10	C12	C14	C16	C18	C20	C22	C24	C26	C28	C33	H
sp	0.000	-0.006	-0.004	-0.004	0.005	0.002	0.002	-0.001	0.008	0.009	0.001	0.001	sp
th	####	####	####	####	####	####	####	####	####	####	####	####	th
	C8	C10	C12	C14	C16	C18	C20	C22	C24	C26	C28	C33	
	1	2	3	4	5	6	7	8	9	10	11	12	

[...] Manual SID entry or manual pipeting
 ***** Unread well or value of out of range
 +++++ High out of range result
 ----- Low out of range
 ##### Spreadsheet matrix calculation
 # Extrapolated data

Interpretation of Results:

Results displayed in Row B of the summary Matrix are calculation of P/N and Results displayed in Row G are calculation of the sample Zika Antigen / Sample Normal Antigen (Background).

- If result in Row B is Negative ($P/N < 2$) Then result is Negative
- If result in Row B is Equivocal ($2 \leq P/N < 3$) Then check background calculation manually to confirm.
- If result in Row B is Positive ($P/N > 3$) Then check background calculation manually to confirm.

14. Agility Warnings and Safety Precautions

The following information aids in the safe and efficient use of the system.

In addition to the warning labels and other cautions previously described in this document, consider the following:






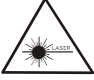
1. Appropriate precautions must be taken when working with biohazards. Technicians must be trained in the safe handling and clean-up of potential blood borne pathogens. Universal precautions, appropriate hygiene, and decontamination of surfaces are recommended. Consult the CDC Zika MAC-ELISA Emergency Use Authorization (EUA) for safety/precautions on handling potentially hazardous substances.
2. Appropriate personal safety precautions must be made when opening and closing the doors to the system cover.
3. When a door is opened and the run has started, do not encroach upon the work area unless prompted by the software for user input of materials or manual intervention.
4. Attend to error messages when the system stops and prompts. These messages indicate a need for user action.
5. Sample tubes must be pushed down as far as possible in the sample racks to prevent the pipette module from being obstructed.
6. Place the sample racks securely into the system. Push the rack firmly towards the back of the system so that the rack clicks in place.
7. Barcode quality is critical to successful sample tube barcode scanning. Scanning is in accordance with ASTM E1466-92 defining barcode quality, position, and orientation of barcode labels. The use of non-standard barcodes or barcodes with poor print quality may be problematic. Barcode labels should be applied using a vertical orientation. The barcode label should be oriented so that it faces out of the opening in the sample rack.
8. Periodic back up of assay and data files is recommended. Copy the files to a disk for storage or archive the data on a secure server. Administrative login is required.
9. Use of this instrument in a dry environment (especially if synthetic materials such as synthetic clothing or carpets, etc. are present) may cause damaging static discharges that may cause erroneous results.
10. It is the user's responsibility to ensure that a compatible electromagnetic environment for the equipment can be maintained in order that the device will perform as intended. The electromagnetic environment should be evaluated prior to operation of Agility.
11. The sample and reagent pipette tips are defined as accessories as only the DYNEX tips have been found to meet the stated precision and accuracy specifications
12. Do not use this instrument in close proximity to sources of strong electromagnetic radiation (e.g. unshielded intentional RF sources) as these may interfere with proper operation.
13. If Agility is used in an unspecified manner, the protection provided by the equipment may be impaired.
14. Do not position Agility so that it is difficult to disconnect it from the power supply.
15. Do not use decontamination or cleaning agents that could cause a HAZARD as a result of reaction with parts of the equipment or with material contained in it. 70% isopropyl or ethyl alcohol as well as laboratory disinfectants containing quaternary ammonium sulfates are approved for use to clean and disinfect Agility. Please contact your instrument provider if there is any doubt about the compatibility of decontamination or cleaning agents with Agility.
16. Agility is tested and compliant to IEC 61326-1:2012 standard for Electrical equipment for

measurement, control and laboratory use. EMC requirements. General requirements and also to IEC 61326-2-6:2012 standard for Electrical equipment for measurement, control and laboratory use. EMC requirements. Particular requirements. In-vitro diagnostic (IVD) medical equipment.

- 17. All parts and accessories for Agility are required to be examined or supplied only by the manufacturer or its designated agent.
- 18. This equipment has been designed and tested to FCC 15: Part B, ICES-003 for Class A device. In a domestic environment it may cause radio interference, in which case you may need to take measures to mitigate the interference.

14.1 Warning Labels

The Agility *Automated ELISA System* and its components contain labels that warn the user of a hazard or an electrical connection. The description of the labels is described below. Potential personal injury to the operator or damage the system can result if the labels are not followed.

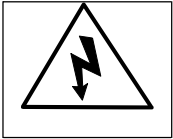
Label	Description
	Alternating current is present
	Caution symbol. Refer to the Routine Maintenance chapter
	Caution, motion hazard
	Caution, pinching or mechanical hazard
	Caution, hot surface
	Laser radiation – Do not stare into beam



Protective conductor terminal



Earth (ground) terminal



Caution, risk of electric shock



Caution, biohazard

Appendix B: Dynex DSX Instructions

DSX

CDC Zika MAC-ELISA Instructions for Use

Revision History

Rev	Date	Summary of Revision
0	2016/08/09	Initial Draft
1	2016/12/06	Included more details on use of the instrument and performing the CDC Zika MAC-ELISA.
2	2018/04/16	Revised to include Calibration Control Serum
3	2019/09/27	Minor modifications made for clarity and consistency with methods described in Instructions for Use.

TABLE OF CONTENTS

1. Instrument Start-Up	70
2. Run Start-Up Assays	70
3. Assay Transfer	75
4. Assay Validation	76
5. Daily Run for Diagnostic Assay	76
5.1 DSX Sample Loading for testing using the Zika MAC-ELISA.....	76
5.2 Creating a Worklist.....	77
5.3 Sample Loading.....	77
5.4 Edit Worklist Screen.....	80
5.5 Load Wizard Lot Specific Data.....	83
5.6 Load Wizard Plate Load.....	84
5.7 Load Wizard Reagent Fluids.....	84
5.8 Load Wizard Wash Fluids.....	85
5.9 Load Wizard Deep Well Strips.....	85
5.10 Load Wizard Sample Tips.....	86
5.11 Load Wizard Reagent Tips.....	86
5.12 Load Wizard Waste Reminder.....	87
5.13 Worklist Start.....	87
6. DSX Zika Assay Stage 1	87
6.1 Stage 1 assay steps.....	88
7. DSX Zika Assay Stage 2	88
7.1 Stage 2 assay steps.....	88
8. Results	89
8.1 Report Example.....	89
9. DSX Warnings and Safety Precautions	92
9.1 Warning Labels.....	93

1 Instrument Start-Up

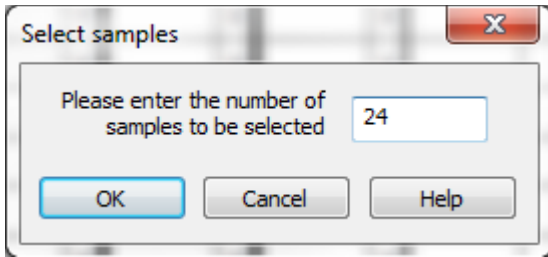
- Power on the DSX
- Boot PC and, when Windows is loaded, start the Revelation software.
- NOTE: Select “Yes” if a window appears asking if you want to allow the Revelation to make changes to the computer.
- An initial dialogue will be displayed.



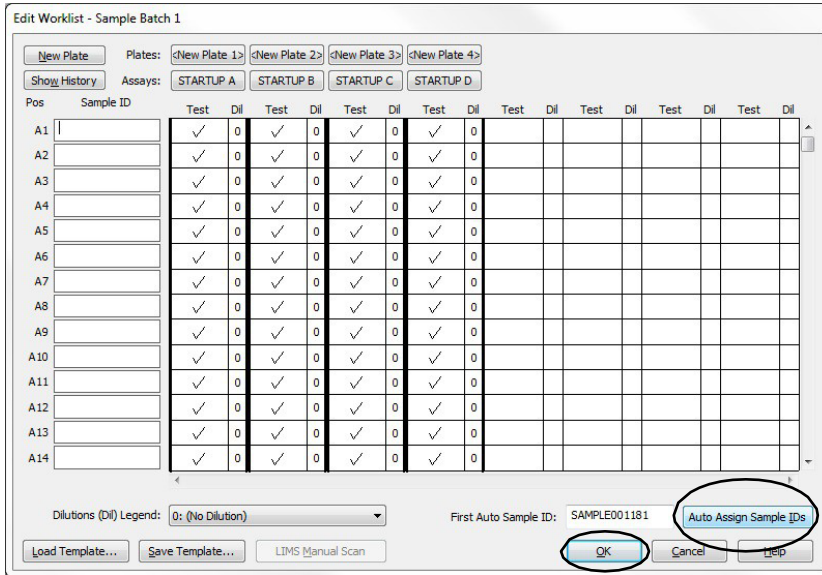
- Selecting *Connect to DSX (on Port1)* will start an instrument connection and a self-test of all the installed modules.
- After the self-test is completed, a self-test report detailing each of the modules installed, serial and version numbers and Pass/Fail details of the self-test is displayed and may be printed for laboratory records. As not all items are visible on the screen the user may need to scroll up and down to ensure all items pass.
- On first use, a wash test assay should be performed to ensure satisfactory washer performance before running assay worklists.

2 Run Start-up Assays

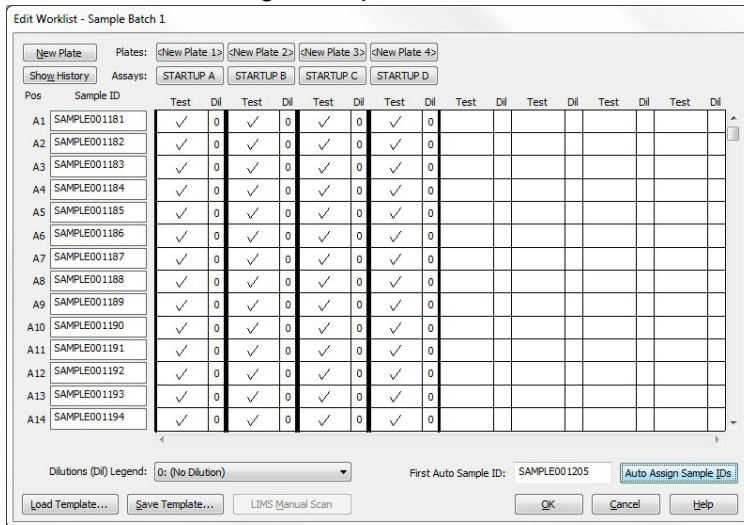
- A. Select “Start up 1” button on main menu screen (may have different name such as “Start up Disp”).
 - B. Select “Add assays using a new batch of samples”. Make sure that “scan barcodes on new sample batch” and “use LIS on new sample batch” are unchecked, and then click “OK”.
 - C. Right click in the box underneath “Tests” for the Start up 1 assay and choose “Select # of samples” from here.
 - D. When the “Select Samples” box appears, enter “24” and click “OK”.
-



E. Repeat previous steps C and D for all remaining plates.



F. Click the “Auto Assign Sample IDs” button in the bottom right of the screen, then click “OK”.



G. Select the green "Play" button on the left to start the worklist.



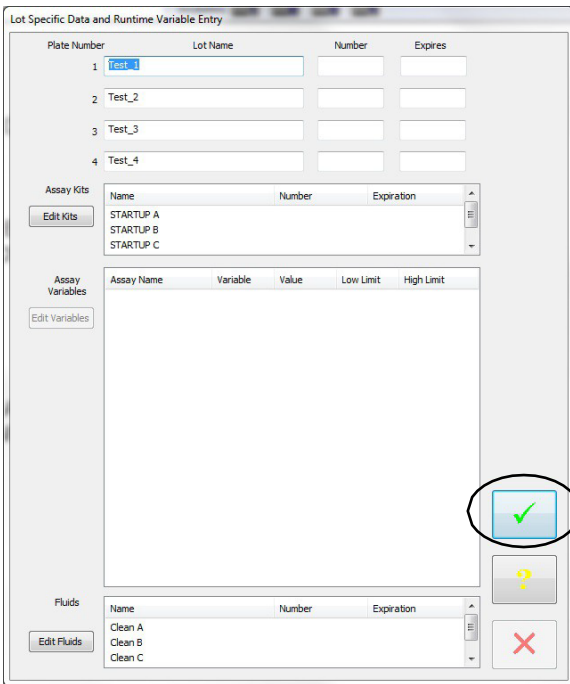
H. Select the down blue arrow on the right to view the timeline.



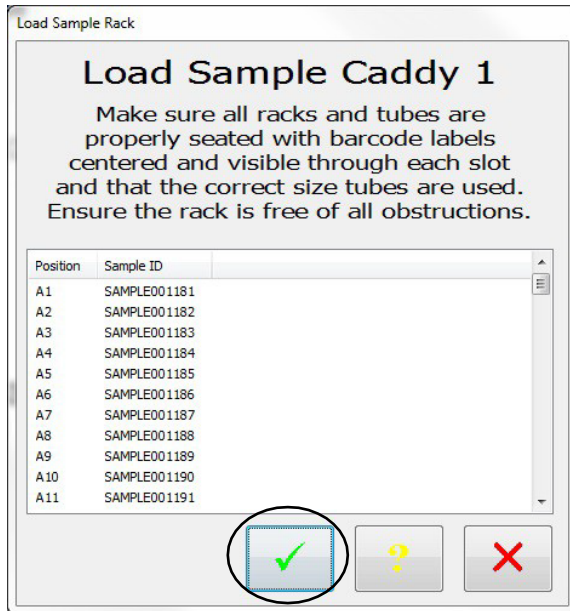
I. Select the green "FastForward" button on the left to start the worklist.



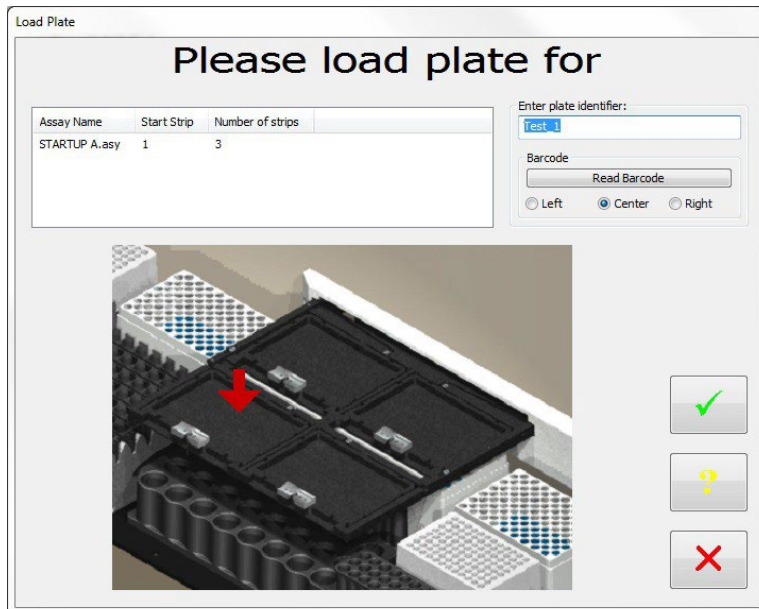
J. Click the green check mark in the "Lot Specific Data and Runtime Variable Entry" window.



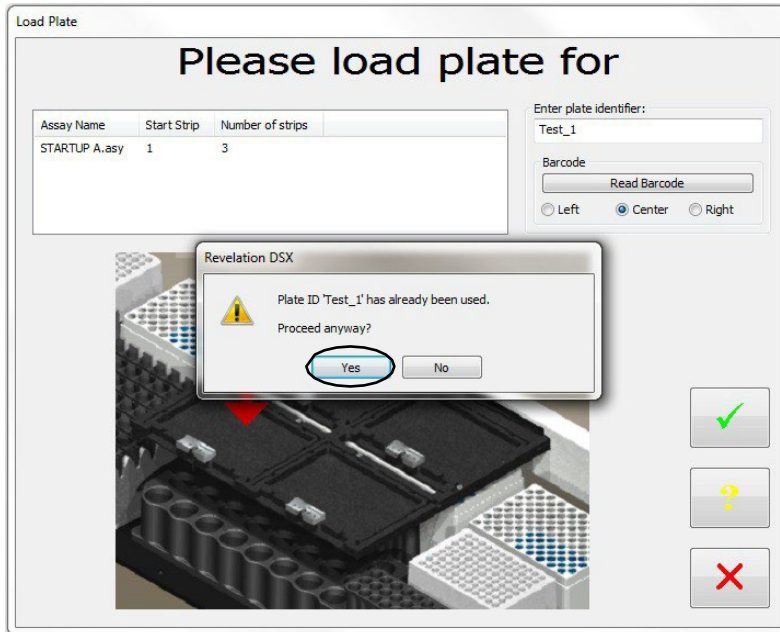
- K. Click the green check mark in the “load sample caddy 1” window.
NOTE: No samples are required.



- L. Follow the load wizard to begin the worklist. The wizard will instruct the locations in which the plates are to be placed.



M. The system will prompt “plate ID ‘.....’ has already been used”. Click “Yes”



N. The wizard will prompt for wash buffer to be added to each wash bottle.

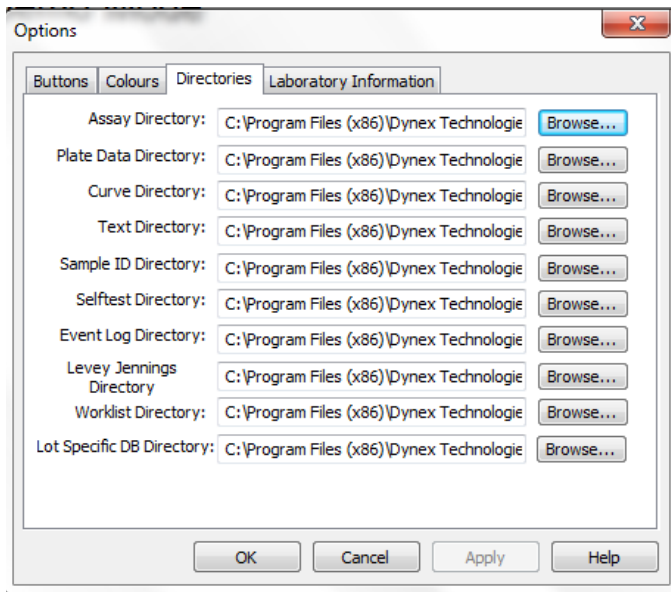


O. When the assay is finished, check the plates to ensure that the wells are filled evenly in all 4 plates. If wells are not filled evenly, see the DSX Troubleshooting guide for steps to unclog the wash head.

- P. Select the “Start up 2” button (may have different name such as “Start Up Asp”) and repeat steps B-L for this assay.
- Q. When the assay is finished, check the plate for complete aspiration of fluid. There should only be tiny droplets remaining in the plate and no scratching on the well bottoms. If there is excessive fluid remaining in the wells or there is scratching on the well bottoms, see the DSX troubleshooting guide.

3 Assay Transfer

The two DSX Zika assay files should be copied to the current assay directory on the PC. The file directory paths are listed and can be viewed or changed by selecting from the Revelation headings menu Tools>Options. Selecting the Directories Tab will display paths for all Revelation file types. Unless changed, the standard default installation is C:\Program Files\Dynex Technologies\Revelation DSX\Assays (for a 64bit Windows OS replace Program Files with Program Files (x86)).



4 Assay Validation



The Dynex DSX system is an open system so it is the responsibility of each laboratory to validate any assay programs for their application and target population. All results reported are the responsibility of the reporting Laboratory

NOTE: Data comparing the Dynex DSX System to an approved manual method (Zika MAC-ELISA) has been provided to FDA by CDC. Individual jurisdictions may require additional testing to validate this assay.

5 Daily Run for Diagnostic Assay

5.1 DSX Sample Loading for testing using the Zika MAC-ELISA

Seven to eight patient specimens can be run per plate. For ease of identifying and assigning samples to worklists, it is recommended to load 7 to 8 samples in rack location 1-7 or 8 and then a further 7 to 8 samples in locations 13-19 or 20.

- Loading Samples Zika Stage 1

In Stage 1 of the Zika assay, samples are diluted and pipetted to the plate. The user should load the samples and assign Sample ID's to the respective sample either by scanning barcodes on the sample tubes or entering the sample ID's manually.

- Loading Samples Zika Stage 2

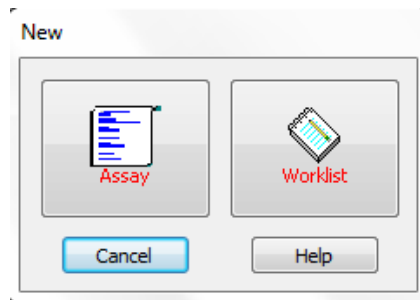
Although Stage 2 of the Zika assay does not pipette samples, sample ID's are assigned to create a worklist. As this assay requires the plate to be removed overnight, the sample ID locations MUST match the same locations as the samples loaded for stage 1 (when the sample was pipetted to the plate) to ensure the correct result is reported for the sample. If barcodes are not used to enter the sample ID's for the Stage 2 (Sample ID's are entered manually), then it is not necessary to load the actual samples tubes. However, the assigned sample ID's must be loaded in the same order as the Zika Stage 1 assay so that the ID's can be assigned to the correct sample locations.



Sample ID locations MUST match the same locations as the samples loaded for Stage 1

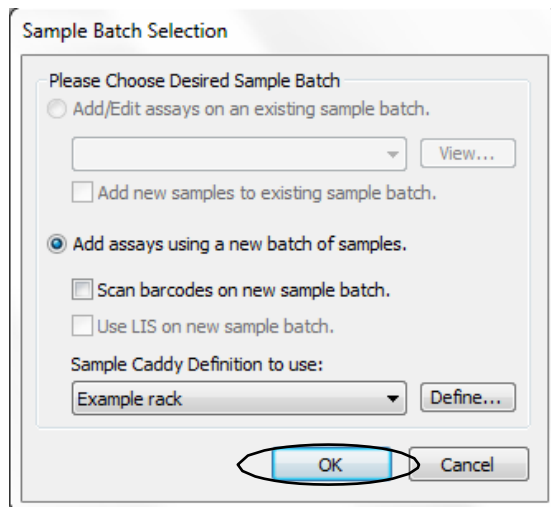
5.2 Creating a Worklist

To create a new worklist in Revelation, select *“File”* then *“New”* from the header menu, and choose *“Worklist”*.



5.3 Sample Loading

After selecting new worklist, the initial dialogue that will be displayed will be the *Sample Batch Selection*.



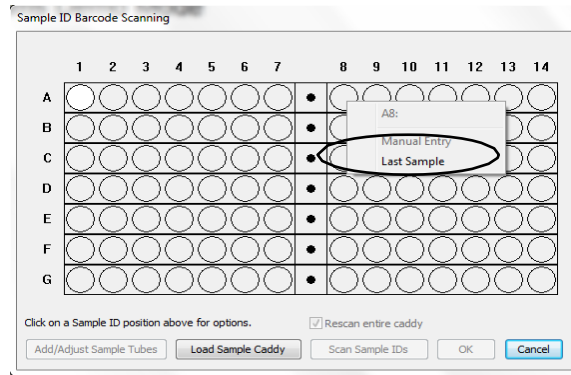
Select “Add assays using a new batch of samples” and,

- if using barcodes, select “Scan Barcodes on new sample batch”. Leave unchecked if sample IDs will be entered manually.
- Select to use LIS (Laboratory Information System) on sample batch if the system is connected to an LIS.
Select “OK” button to display the next screen.

To Barcode Scan samples:

- Make sure the check box is checked to scan barcodes on new sample batch.
 - The dialogue displays a graphic of the sample rack which has 7 racks labelled A-G and 14 positions labelled 1-14. Samples need to be loaded in the rack sequentially with no gaps. Select the circle representing the last sample in the sample rack and
-

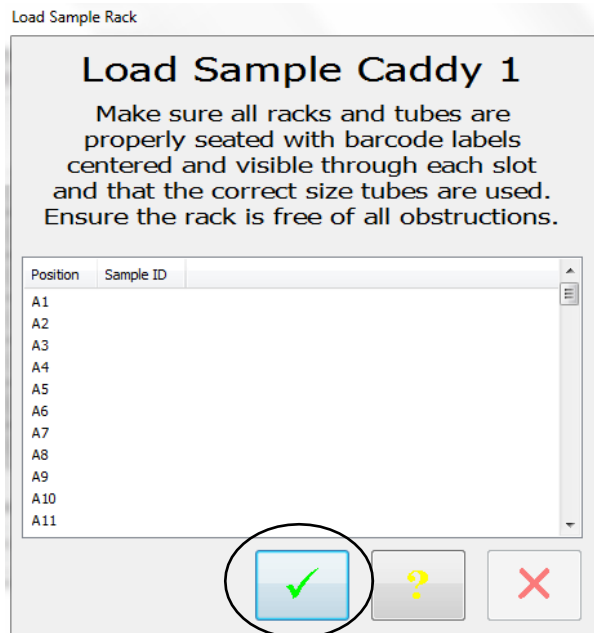
click. Select “Last Sample” from the window.



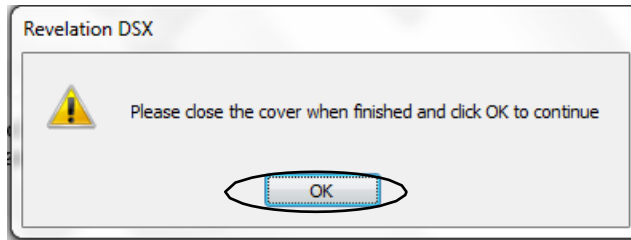
NOTE: The Zika MAC-ELISA is capable of running a maximum of 8 samples on each plate. The DSX is a 4 plate analyzer, so a maximum of 32 samples can be loaded in each created worklist.

Select the number of samples, then select the “Load Sample Caddy” button.

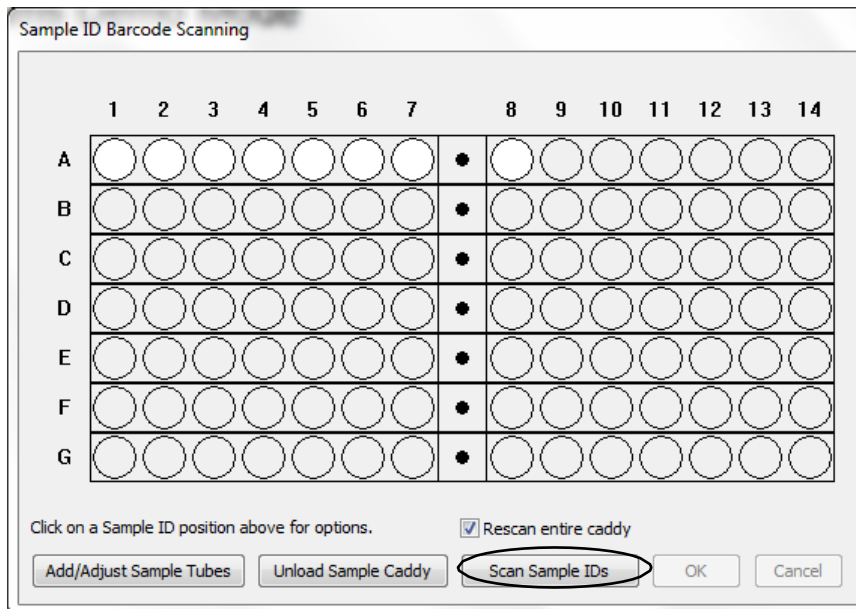
The next dialogue requests the samples to be loaded in the caddy on the instrument. Load the samples in the racks with the barcodes visible in the rack spaces pointing toward the back of the instrument. Select the green check mark in the pop up window.



The user will be prompted to close the DSX blue cover. Select “OK” when the cover is closed.



Select the “Scan Sample IDs” button at bottom of rack Graphic. The DSX will scan the barcodes.



The instrument will use the pipette module to lift the racks and scan the tubes in front of the Barcode scanner module.

As the instrument is scanning the tubes, the graphic for each tube will change color. If the tube is successfully scanned, it will turn Green.

If the tube position is Red, this indicates that the tube scan was not successful and an error message will appear. If this happens:

- Select the “Unload the Sample Caddy” button.
- Either reposition the tube for rescanning or manually enter the barcode by clicking on the red positions and typing in the barcode.
- Repeat steps necessary after selecting “Load Sample Caddy” for rescanning the barcodes.

If the tube position is Yellow, this indicates the system encountered duplicate barcodes.

- Either generate a new barcode for one of the duplicate samples or manually edit one of the duplicate barcodes by clicking on the yellow positions and editing the barcode.

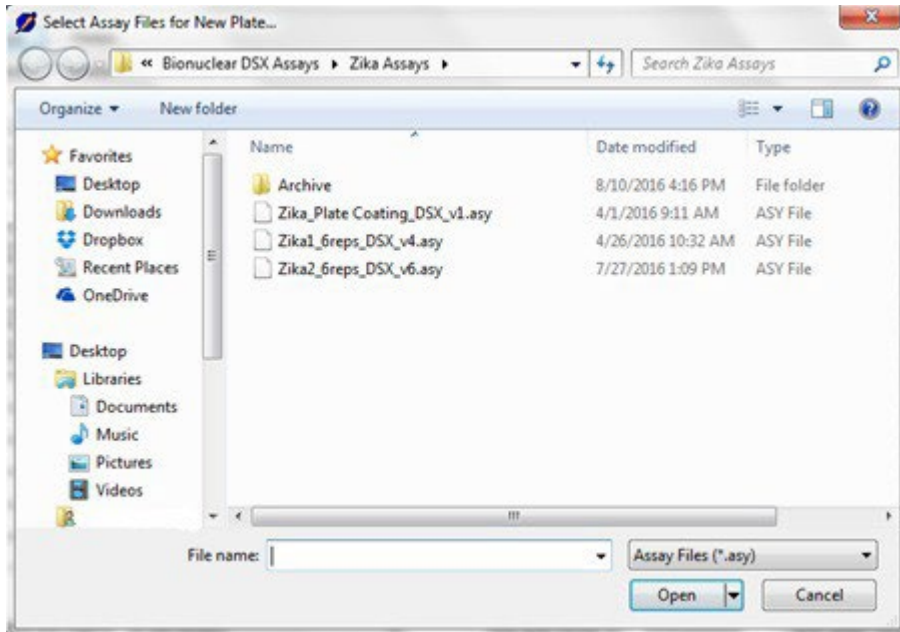
Once all Sample ID’s have been correctly assigned either by scanning or entering manually, select “OK” to advance to the next Screen.

5.4 Edit Worklist Screen

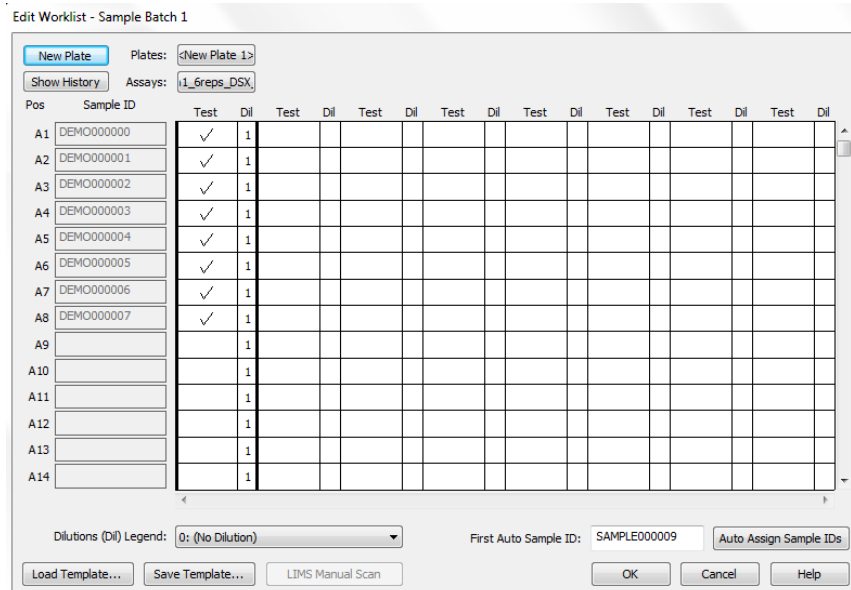
Once the samples have been loaded, the “Edit Worklist” screen will be displayed to create a worklist. The sample ID’s read or assigned will be listed in the sample ID column. Select the “New Plate” button at the top left of the screen.

The screenshot shows the 'Edit Worklist - Sample Batch 1' window. At the top left, the 'New Plate' button is circled in red. Below it are buttons for 'Show History' and 'Assays: STARTUP A, STARTUP B, STARTUP C, STARTUP D'. The main area is a table with columns for 'Pos', 'Sample ID', and four pairs of 'Test' and 'Dil' columns. The 'Dil' columns contain '0' and the 'Test' columns contain a checkmark. At the bottom, there is a 'Dilutions (Dil) Legend' dropdown set to '0: (No Dilution)', a 'First Auto Sample ID' field with 'SAMPLE001181', and an 'Auto Assign Sample IDs' button. Other buttons at the bottom include 'Load Template...', 'Save Template...', 'LIMS Manual Scan', 'OK', 'Cancel', and 'Help'.

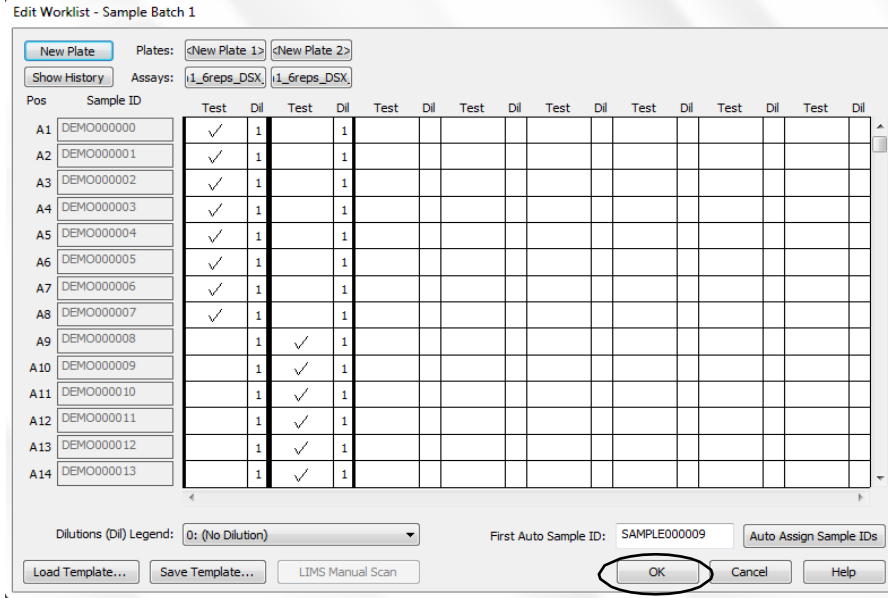
This will open an assay file selection. Select the assay file to be run on the worklist.



The first plate and assay name will be displayed above the first column. Click the cell in the first plate column below the word “tests” and select the number of samples to be run for that assay. Select the sample IDs to be run on the plate. This can be done by marking individually or selecting and dragging down the column or by right clicking in a cell and selecting the number of check marks from that cell down. The number of check mark selections available will be determined by the maximum number of test wells in the actual plate template. If the system is connected to an LIS, the software will automatically check off the sample IDs and no manual sample selection is required.



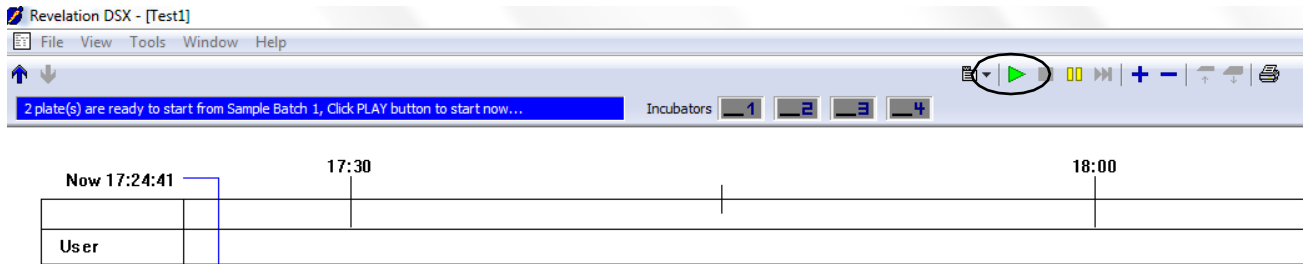
If multiple plates will be run, add another new plate and select samples to run as described above.



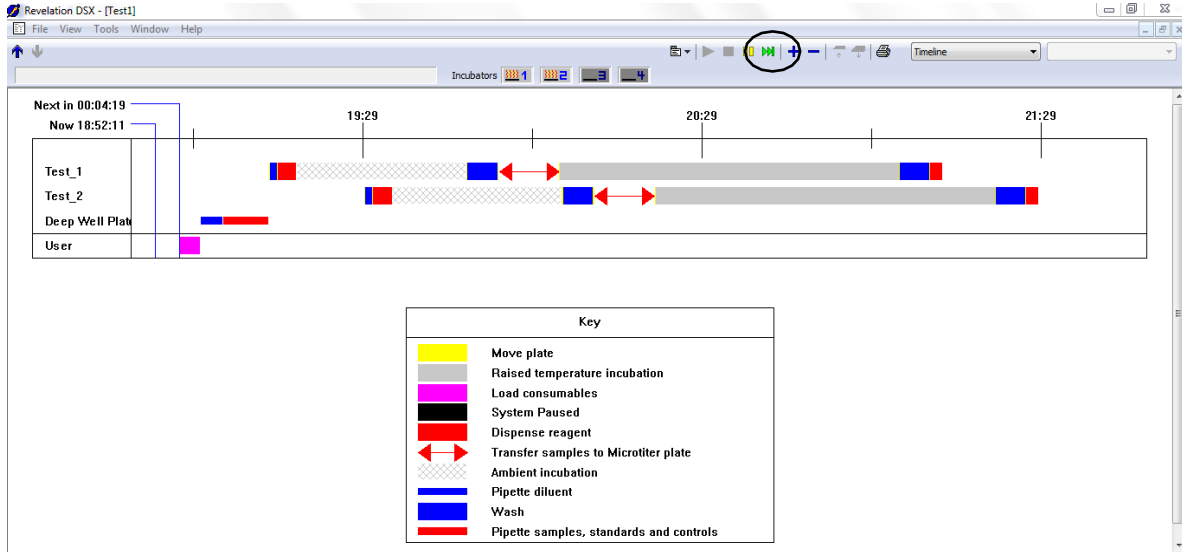
When the number of plates and samples have been finalized, select the "OK" button along the bottom to complete editing the worklist and to continue.

The user will be alerted in the main header of the Revelation Software when the plates are available to be started.

Start the worklist by clicking the green play button on the right.



After selecting the green play button, there will be a short time before the schedule is displayed on the screen.



Optional: Select the green “fast forward” button to speed up scheduling.

5.5 Load Wizard Lot Specific Data

At the scheduled time on the timeline, the instrument will display the Load Consumables wizard.

The first screen displayed allows users to enter kit lot information that will be added to the results report. Press the “Accept” button to continue to the next screen

Consumables-Lot Confirmation

Please enter the actual Lot Information for Assay Kit :
Zika_6reps_DSX_v4

Kit Name: Zika_6reps_DSX_v4 Lot #: Exp Date:

Assay Protocol Parameters:

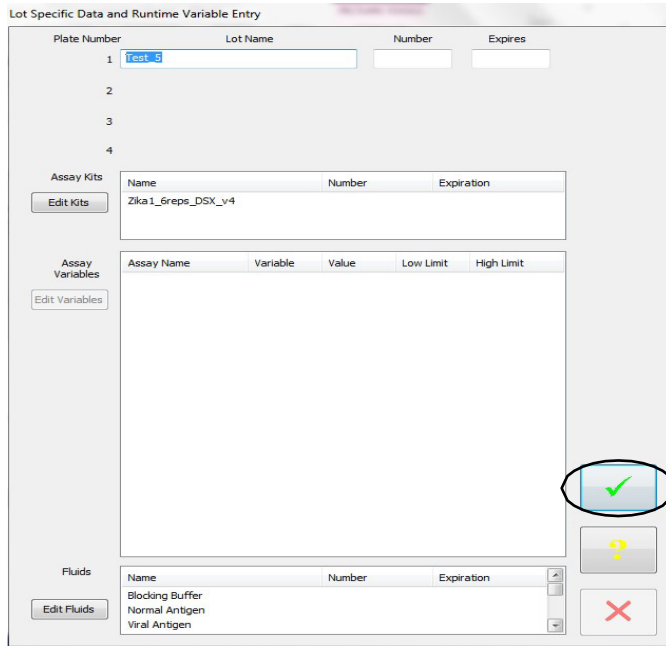
Variable	Value	Low Limit	High Limit

Value: Low Limit: High Limit:

Please select Accept to use the above data

Accept Cancel Clear

The second screen allows users to enter additional data for lot specific or runtime data reduction variables for each fluid used. If this information is not necessary, selecting the “check mark” button will advance to next screen of wizard.



5.6 Load Wizard Plate Load

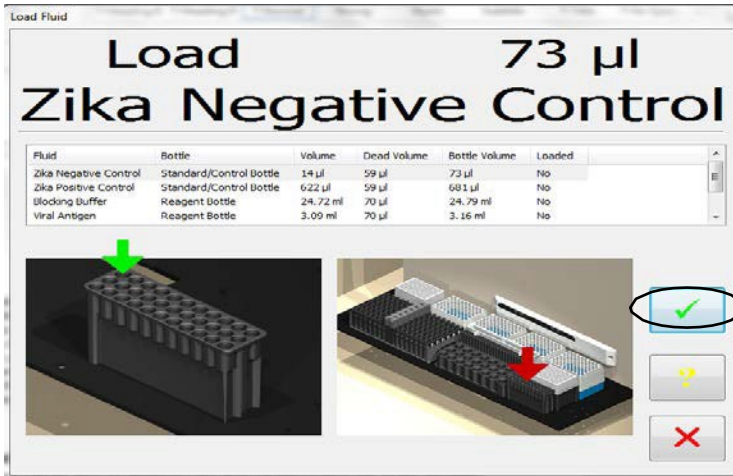
The plate load screens require a unique user-entered plate ID (this will become the result file name) and the location and number of strips to load for the plate. Load the plate into a plate carrier then into the indicated location on the instrument. Select the “check mark” button to proceed and accept the plate load. If there are multiple plates to load, a screen will be displayed for each plate to be loaded before the software proceeds to the next item.



5.7 Load Wizard Reagent Fluids

A screen will display the volume for each fluid to be loaded and, in the lower section, the rack and position into which the fluid should be loaded. After each individual fluid is loaded to the instructed location, select the “check mark” button

to acknowledge each fluid requested has been loaded.



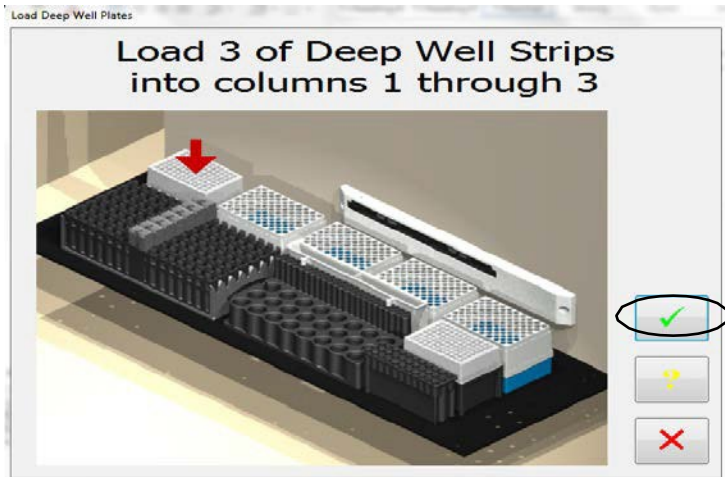
5.8 Load Wizard Wash Fluids

The next screen displays the required wash fluids to be loaded. The fluid name and volume will be displayed, along with the wash bottle location. After each individual fluid is loaded to the instructed location, select the “check mark” button to acknowledge each fluid request has been completed.



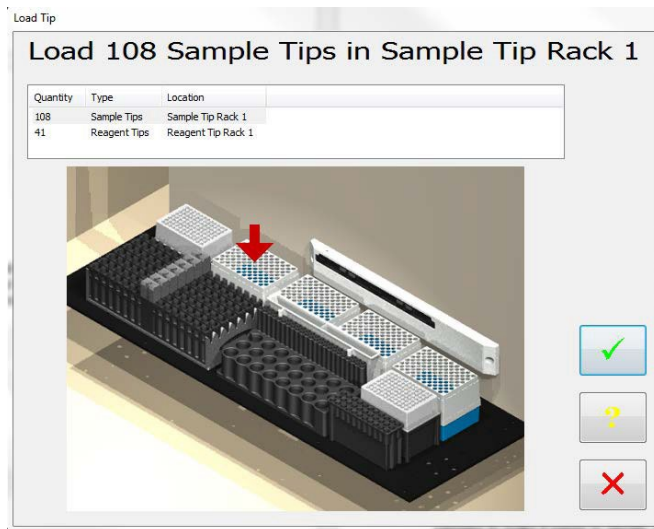
5.9 Load Wizard Deep Well Strips (Dynex Part No. 62910)

Next, the Deep Well Strips will be loaded. This screen details the number of deep well strips required and how many to load in each displayed location. Once the required number of deep well strips have been loaded, select the “check mark” button.



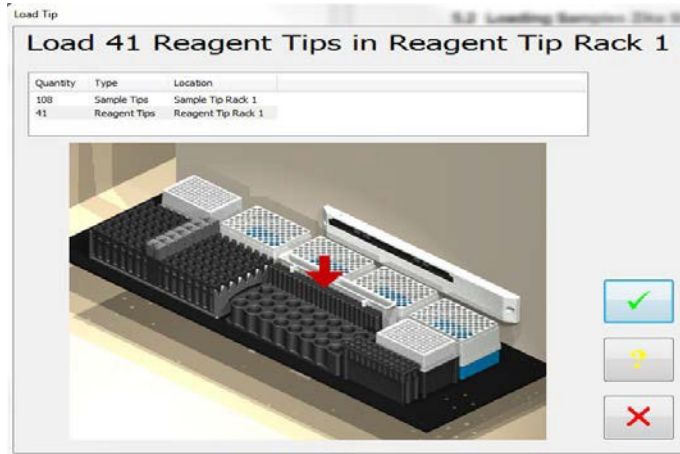
5.10 Load Wizard Sample Tips (Dynex Part No. 65910)

The Load Sample Tips screen will show how many boxes of 108 sample tips should be loaded. There are potentially 4 load positions depending on how many tips are required. (If the instrument has already been used for a previous worklist, it is possible no tips will be requested).



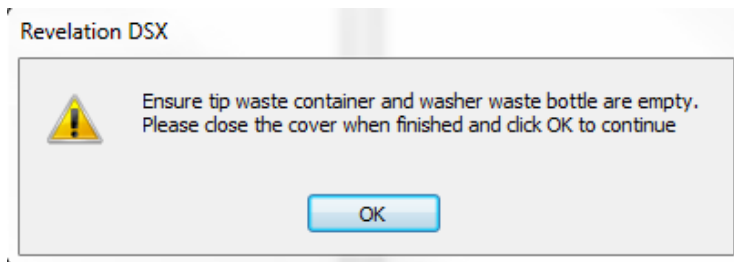
5.11 Load Wizard Reagent Tips (Dynex Part No. 65920)

The Load Reagent Tips screen will show where to load the reagent tips. The instrument will request 41 tips to be loaded in the reagent tip rack as shown. (If the instrument has already been used for a previous worklist, it is possible no tips will be requested).



5.12 Load Wizard Waste reminder

At the completion of the Load Wizard screen, a reminder to empty the tip waste box and washer waste bottle will be displayed.



5.13 Worklist Start

Once the Load Wizard has been completed and all items requested have been acknowledged as loaded, the instrument display will switch back to the timeline display and show the progress of the running worklist.

6 DSX Zika Assay Stage 1

NOTE: Plates must be manually coated with goat anti-human IgM and incubated overnight prior to transferring to an automated system. See the Zika MAC-ELISA Assay procedure (p. 11) COATING THE PLATES

When the plates are scheduled on the timeline, the following plate processes are performed for Zika Stage 1 by the DSX instrument.

6.1 Stage 1 assay steps

- Aspirates the contents of the well
- Dispenses 200 μ L of Blocking Buffer to inner 60 wells of plate
- 30 minute ambient incubation
- Washes with 300 μ L CDC IgM Wash Buffer x 5 cycles with final aspirate
- Pipettes samples (diluted 1:400 with wash buffer) to the 7 or 8 sample wells (6 replicates).
- Pipettes pre-diluted Zika IgM Positive Control to PC1 (3 replicates) and PC2 (3 replicates) wells.
- Pipettes pre-diluted Negative Control to NC1 (3 replicates) and NC2 (3 replicates) wells.
- Pipettes pre-diluted Calibration Control Serum to CO1 (3 replicates) and CO2 (3 replicates) wells.

NOTE: Controls are loaded in the control rack pre-diluted because the dilution factor of the controls may change from lot-to-lot).

- Incubates 37°C for 60 minutes
- Washes 300 μ L CDC IgM Wash Buffer x 5 cycles with final aspirate
- Dispenses 50 μ L of Viral Antigen to first 3 replicates of all samples and all 3 replicates of PC1, NC1, and CO1 wells.
- Dispenses 50 μ L of Normal Antigen to last 3 replicates of all samples and all 3 replicates of PC2, NC2, and CO2 wells.
- Reads at 405 nm.

NOTE: This step is not necessary but will give a read report of which sample IDs have been pipetted to what wells on the plate because the plate needs to be removed for an overnight incubation of the system.

7 DSX Zika Assay Stage 2

When the plates are scheduled on the timeline, the following plate processes are performed for Zika Stage 2 by the DSX instrument.

7.1 Stage 2 assay steps

- Washes 300 μ L CDC IgM Wash Buffer x 5 cycles with final aspirate
 - Dispenses 150 μ L of DI Water to all outer wells of plate except blank wells E12, F12, G12.
 - Dispenses 50 μ L of Monoclonal Antibody to inner 60 wells of plate
 - Incubates 37° C for 60 minutes
 - Washes 300 μ L CDC IgM Wash Buffer x 5 cycles with final aspirate
 - Dispenses 150 μ L of DI Water to all outer wells of plate except blank wells E12, F12, G12.
 - Dispenses 75 μ L of Blue TMB Substrate to inner 60 wells of plate
 - 10 Minute Ambient incubation
 - Dispenses 50 μ L of Stop Solution to inner 60 wells of plate and blank wells
-

E12,F12,G12

- 1 minute Ambient incubation
- Reads Plate 450 nm
- QC - $PC1/CO1 > 2$
- Spreadsheet calculation- Average of first 3 replicates of each sample divided by the average of CO1 wells.
- Threshold- determination of sample calculation result. Negative samples less than 2, Positive sample greater or equal to 3, Equivocal -between 2 and 3.

NOTE: For interpretation/reporting of results from this assay, refer to the appropriate section of the EUA.

8 Results

When the plate for Stage 2 has been completed, it will save the results to a file. The File will be stored in the format [plate ID].dat

8.1 Report Example

The report will provide the following details:

- Fluids used to process the plate and any lot information for reagents that may have been entered at run time.
- Whether QC for the plate has passed or failed to evaluate the plate validity (using the calculations: $PC1/CO1 \geq 2$ and $NC1/CO1 < 2$).
- Grid of the OD values with the result of each sample calculation in a Matrix.
 - Row B, Mean of the sample replicates reacted with viral antigen / mean of the Calibration Control Serum wells reacted with viral antigen. (P/N)
- Interpretation of the result $< 2 =$ Negative, $> 3 =$ Positive, and anything in between as equivocal

Interpretation of Results:

Results displayed in Row B of the summary Matrix are calculation of P/N.

- If result in Row B is Negative ($P/N < 2$) Then result is Negative
- If result in Row B is Equivocal ($2 \leq P/N < 3$) Then check Background calculation manually.
- If result in Row B is Positive ($P/N > 3$) Then check Background calculation manually.

NOTE: See example of print out on next two pages.

	1	2	3	4	5	6	7	8	9	10	11	12
A	0.004	0.001	0.000	0.000	0.000	-0.002	-0.002	-0.002	-0.002	0.000	0.001	-0.001
B	-0.001	0.103	0.390	0.049	1.478	0.085	0.051	1.409	0.302	0.951	0.053	-0.001
C	-0.002	0.051	0.338	0.043	1.381	0.057	0.033	1.297	0.276	0.900	0.033	-0.001
D	-0.002	0.062	0.350	0.039	1.311	0.054	0.031	1.267	0.252	0.796	0.032	-0.001
E	-0.002	0.033	0.040	0.035	0.037	0.046	0.027	0.036	0.029	0.047	0.045	BLANK
F	-0.001	0.034	0.044	0.034	0.034	0.046	0.030	0.034	0.028	0.045	0.045	BLANK
G	-0.001	0.036	0.034	0.034	0.037	0.047	0.030	0.039	0.037	0.052	0.044	BLANK
H	-0.001	0.001	0.001	0.001	0.003	0.000	0.001	0.001	0.001	0.005	0.005	0.006

***** Indicates an unread well or value out of range

THRESHOLD RESULTS

+ equation = 3
 = 3.000
 - equation = 2
 = 2.000

Sample ID	Location	Data	Mean	S.D.	C.V.	Result
[SAMPLE000009]	B2	1.497	1.497	*****	*****	NEG
	C2	#####				
	D2	#####				
	E2	#####				
	F2	#####				
	G2	#####				
[SAMPLE000010]	B3	7.441	7.441	*****	*****	POS
	C3	#####				
	D3	#####				
	E3	#####				
	F3	#####				
	G3	#####				
[SAMPLE000011]	B4	0.910	0.910	*****	*****	NEG
	C4	#####				
	D4	#####				
	E4	#####				
	F4	#####				

Sample ID	Location	Data	Mean	S.D.	C.V.	Result
	G4	#####				
[SAMPLE000012]	B5	28.766	28.766	****	****	POS
	C5	#####				
	D5	#####				
	E5	#####				
	F5	#####				
	G5	#####				
[SAMPLE000013]	B6	1.359	1.359	****	****	NEG
	C6	#####				
	D6	#####				
	E6	#####				
	F6	#####				
	G6	#####				
[SAMPLE000014]	B7	0.800	0.800	****	****	NEG
	C7	#####				
	D7	#####				
	E7	#####				
	F7	#####				
	G7	#####				
[SAMPLE000015]	B8	27.407	27.407	****	****	POS
	C8	#####				
	D8	#####				
	E8	#####				
	F8	#####				
	G8	#####				
[SAMPLE000016]	B9	5.731	5.731	****	****	POS
	C9	#####				
	D9	#####				
	E9	#####				
	F9	#####				
	G9	#####				

Sample ID	Location	Data	Mean	S.D.	C.V.	Result
C1	A1	#####	#####	****	****	C1
C2	B1	#####	#####	****	****	C2
C3	C1	#####	#####	****	****	C3
C4	D1	#####	#####	****	****	C4
C5	E1	#####	#####	****	****	C5
C6	F1	#####	#####	****	****	C6
C7	G1	#####	#####	****	****	C7
C8	H1	#####	#####	****	****	C8
C9	A2	#####	#####	****	****	C9
C10	H2	#####	#####	****	****	C10
C11	A3	#####	#####	****	****	C11

9 DSX Warnings and Safety Precautions

The following information aids in safe and efficient use of the system.





In addition to the warning labels and other cautions previously described in this document, consider the following:

1. Appropriate precautions must be taken when working with biohazards. Technicians must be trained in the safe handling and clean-up of potential blood borne pathogens. Universal precautions, appropriate hygiene, and decontamination of surfaces are recommended. Consult the CDC Zika MAC-ELISA Emergency Use Authorization (EUA) for safety/precautions on handling potentially hazardous substances.
2. Appropriate personal safety precautions must be made when opening and closing the system cover.
3. When the cover is opened and the run has started, do not encroach upon the work area unless prompted by the software for user input of materials or manual intervention.
4. Attend to error messages when the system stops and prompts. These messages indicate a need for user action.
5. Sample tubes must be pushed down as far as possible in the sample racks to prevent the pipette module from being obstructed.
6. Barcode quality is critical to successful sample tube barcode scanning. Scanning is in accordance with ASTM E1466-92 defining barcode quality, position, and orientation of barcode labels. The use of non-standard barcodes or barcodes with poor print quality may be problematic. Barcode labels should be applied using a vertical orientation. The barcode label should be oriented so that it faces out of the opening in the sample rack.
7. Periodic back up of assay and data files is recommended. Copy the files to a disk for storage or archive the data on a secure server.
8. Use of this instrument in a dry environment (especially if synthetic materials such as synthetic clothing or carpets, etc. are present) may cause damaging static discharges that may cause erroneous results.
9. It is the user's responsibility to ensure that a compatible electromagnetic environment for the equipment can be maintained in order that the device will perform as intended. The electromagnetic environment should be evaluated prior to operation of DSX.
10. The sample and reagent pipette tips are defined as accessories as only the DYNEX tips have been found to meet the stated precision and accuracy specifications
11. Do not use this instrument in close proximity to sources of strong electromagnetic radiation (e.g. unshielded intentional RF sources) as these may interfere with proper operation.
12. If DSX is used in an unspecified manner, the protection provided by the equipment may be impaired.
13. Do not position DSX so that it is difficult to disconnect it from the power supply.

14. Do not use decontamination or cleaning agents that could cause a HAZARD as a result of reaction with parts of the equipment or with material contained in it. 70% isopropyl or ethyl alcohol as well as laboratory disinfectants containing quaternary ammonium sulfates are approved for use to clean and disinfect DSX. Please contact your instrument provider if there is any doubt about the compatibility of decontamination or cleaning agents with DSX.
15. DSX is tested and compliant to IEC 61326-1:2012 standard for Electrical equipment for measurement, control and laboratory use. EMC requirements. General requirements and also to IEC 61326-2-6:2012 standard for Electrical equipment for measurement, control and laboratory use. EMC requirements. Particular requirements. In-vitro diagnostic (IVD) medical equipment.
16. All parts and accessories for DSX are required to be examined or supplied only by the manufacturer or its designated agent.
17. This equipment has been designed and tested to FCC 15: Part B, ICES-003 for Class A device. In a domestic environment it may cause radio interference, in which case you may need to take measures to mitigate the interference.

9.1 Warning Labels

The DSX *Automated ELISA System* and its components contain labels that warn the user of a hazard or an electrical connection. The description of the labels is described below. Potential personal injury to the operator or damage the system can result if the labels are not followed.

Label	Description
	Alternating current is present
	Caution symbol. Refer to the Routine Maintenance chapter
	Caution, motion hazard
	Caution, pinching or mechanical hazard



Caution, hot surface



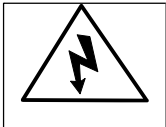
Laser radiation – Do not stare into beam



Protective conductor terminal



Earth (ground) terminal



Caution, risk of electric shock



Caution, biohazard

This page is left intentionally blank